



Playground accessories



Make every playground an experience!

Whether in schools and kindergartens, amusement parks or sports and playgrounds: EUROFLEX® accessories turn every playground into an experience. It leaves children room for creativity and imagination and offers a wide range of play and movement options. It's not only enhancing your playground with individual and colourful design options, it is also perfectly fitting to the EUROFLEX® impact protection slabs. Rubber as a material ensures a pleasant seat, dries quickly, is weather-resistant, soft and therefore safe.



Tested quality

tested according to EN 71/3, tested safety according to the German Equipment Safety Act, fire test, special abrasion tests



High resistance

against frost and weathering



Environmentally friendly production

high recycling rate



Clear, natural design

Attractive, simple, stable shapes



High-quality raw materials

High-quality granulates and binding agents



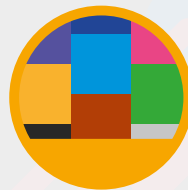
High elasticity

minimizes the risk of injury during balancing and climbing on playground accessories



High slip resistance

for balancing on balls, half balls, dice or also on steppers



Many design options

numerous SBR and EPDM colors, multicolor, motifs, letters, numbers



EUROFLEX®

INTERACTIVE GAMES



Living Animals

- Power is created by the user
- No power supply needed
- Adjustable volume
- Digital audio quality
- USB storage for MP3 audio files inside (delivery contains USB stick with animal sounds and stories in German and English language)

.mp3 sound files available on request

dimensions L x W x H

elephant: 560 x 190 x 395 mm
rhinocerus: 700 x 250 x 400 mm
dromedary: 750 x 200 x 510 mm
(dimensions with crank: + 143 mm length)

colours

elephant: red RAL 3017
rhinocerus: blue RAL 5015
dromedary: yellow RAL 1012

accessories

per animal 2 ground anchors with adapter
(including screw-in bar and adhesive) or
1 base plate has to be ordered separately

EUROFLEX®

INTERACTIVE GAMES



Talking Mushroom

- Power is created by the user
- No power supply needed
- Adjustable volume
- Digital audio quality
- USB storage for MP3 audio files inside (delivery contains USB stick with animal sounds and stories in German and English language)
- adjustable playback times

.mp3 sound files available on request

dimensions

stam: Ø 255 mm, height: 400 mm

cap: Ø 500 mm, height: 250 mm

colours

stam: red

cap: EPDM RAL 5015 blue with dots in RAL 1012 orange



EUROFLEX®

INTERACTIVE GAMES



Game Floor

Energy is created with the crank on the half ball which generates a light effect in different colours on the elastic slabs (4 or 8 slabs possible). The children have to jump on the tiles and kick the current colour (an integrated speaker in the half ball is telling the colour). When the player kicks the illuminating tile, another one will illuminate and so on. The software will adapt the speed to the skill of the player.

dimensions

energy element: Ø 500 mm, height: 250 mm
slabs: 500 x 500 x 30 mm

colours

energy element: bright red EPDM RAL 3017
slabs: blue EPDM RAL 5015







Caterpillar head

The EUROFLEX® caterpillar head is a design element that can be used to combine half balls and balls to form a caterpillar. The elements then offer a seating accommodation or an opportunity to play for children and can be extended by any number of EUROFLEX® balls. The eyes are already glued on, the feelers must be glued on after delivery. Consequently the caterpillar adds a friendly face to every playground.

Dimensions half ball with Ø 695 mm

Colours
half ball: EPDM colours: see page 3
feeler: EPDM bright green RAL 6017 or EPDM bright yellow RAL 1012
eyes: EPDM dark blue RAL 5010 or EPDM bright red RAL 3017

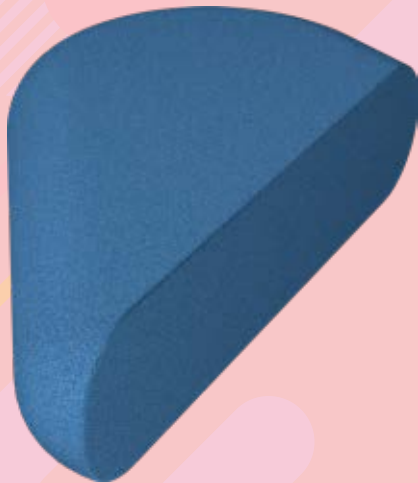


Diamond

EUROFLEX® Diamond is a design element that can be used as a seat, balancing element or demarcation element. It lines up seamlessly between cube and ball and provides a further design option.

Dimensions
Full diamond length x width x height: 500 x 500 x 450 mm
Half diamond length x width x height: 500 x 500 x 225 mm

Colours red/green/black/grey
 EPDM colours; see page 3
 available as EPDM glitter version on request



Half heart

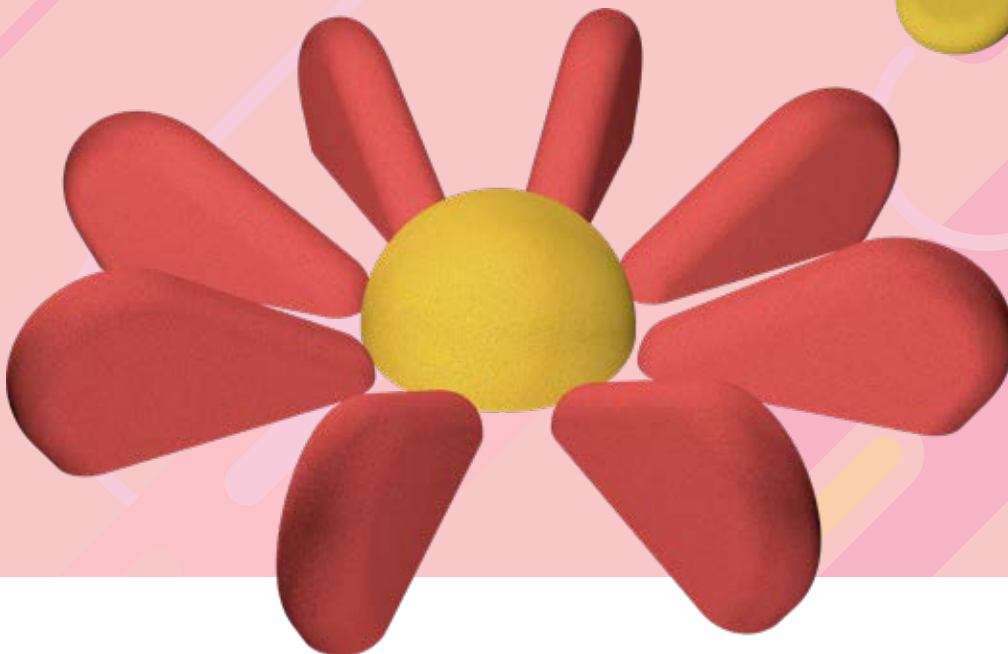
The EUROFLEX® Half Heart design element can be used individually as a composite seating element or as a decorative design element in pedestrian zones, shopping centres or parks. Depending on a vertical or horizontal installation, holes are drilled on the underside or on the side. The ground anchors will then enable a safe installation.

Dimensions

L x B x H: 850 x 451 x 180 mm
Ground anchor for vertical installation:
2x Ø 31.8 mm, length ca. 750 mm
Ground anchor for horizontal installation:
2x Ø 31.8 mm, length ca. 300 mm

Colours

EPDM colours: see page 3





EUROFLEX® animals and mushrooms

Imaginative play equipment or an exciting seating option - They can be used as more than just playthings, and can also be used as little islands in playgrounds and kindergardens.



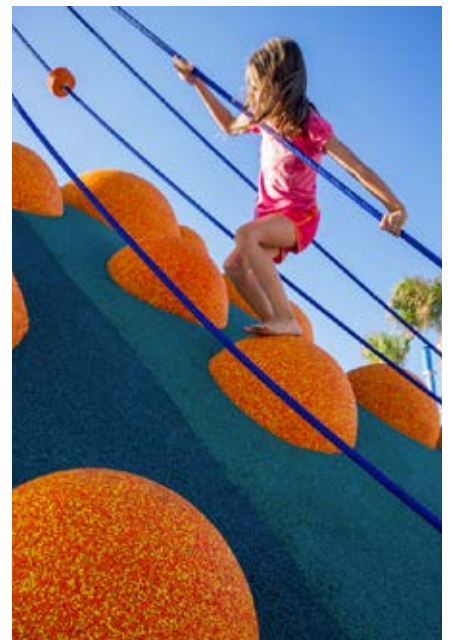
elephant, pony, dromedary, rhinocerus

dimensions L x W x H	elephant: 560 x 190 x 395 mm rhinocerus: 700 x 250 x 400 mm dromedary: 750 x 200 x 510 mm pony: 580 x 200 x 470 mm base plate: ø 700 mm
colours	SBR: red/green/black/grey EPDM: see page 3
accessories	to be ordered separately: outdoor areas: per animal 2 ground anchors with adapter (including screw-in bar and adhesive) indoor areas: 1 base plate (including adhesive)



mushrooms

Ø stam	255 mm
height stam	200 / 300 / 400 / 500 mm
colour stam	SBR red
Ø cap	450 mm
height cap	150 mm
colours cap	EPDM red, green, yellow, blue
accessories	to be ordered separately: per mushroom 1 ground anchor with adapter (including adhesive)



EUROFLEX® balls & half balls

EUROFLEX® balls and half balls are highly successful design components for distinctively remarkable playgrounds. They are suitable for playgrounds, as seating or bordering element also in pedestrian zones. They are also a perfect solution as a climbing or balancing element.



SBR balls and half balls

dimensions Ø 345 / 500 / 695 mm

colours SBR: red/green/black/grey
EPDM: see page 3

accessories to be ordered separately:
outdoor areas: ground anchor
indoor areas: metal plate
300 x 300 x 4 mm



EPDM balls and half balls



EPDM Multicolor balls and half balls (2 or 3 colours)

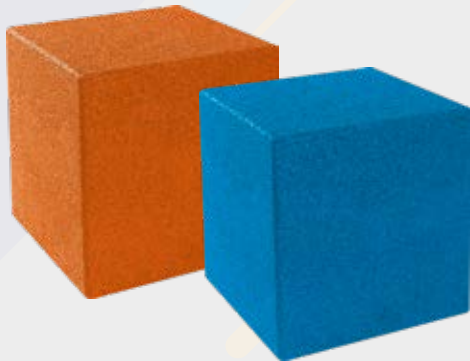


EUROFLEX® cubes

EUROFLEX® cubes are highly successful design components for distinctively noticeable playgrounds. They are suitable for playgrounds, as seating or bordering element also in pedestrian zones. They are also a perfect solution as a climbing or balancing element.



cube SBR



cube EPDM

dimensions	400 x 400 x 400 mm
colours	SBR: red/green/black/grey EPDM: see page 3
other	The cubes can be ordered with 4 ground anchors or without integrated ground anchor





EUROFLEX® modular sandbox edging & Stepper

Playing in a sandbox is one of the favourite activities of children. The EUROFLEX® Modular Sandbox Edging is the ideal supplement for separating the sandbox from the remainder of the playground. The soft rubber surface offers active all-round protection and protects children from painful and serious injuries (as opposed to slippery and weathered sandbox edges made of wood or concrete, which pose a high risk of injury due to their surface structure and hardness). The use of side elements allows a high degree of freedom in designing the sandbox and access by machinery for replacing the sand.

EUROFLEX® Stepper is a balancing element with 4 different heights for fitness courses and playing areas. It trains sense of balance and co-ordination skills in a playful way. The easy-to-install base socket provides stable support and facilitates installation and removal.



with internal steel reinforcement for extremely high stability

Modular sandbox edging

dimensions	1,150 x 150 x 300 mm
colours	red/green/black/grey
Sonstiges	double steel reinforcement guarantees excellent material stability of the pivot joints
accessories	plastic connector pins included, anchoring piles 60 / 100 cm to be ordered separately



Stepper

diameter	Ø 255 mm
heights	200 / 300 / 400 / 500 mm
colour	red/green/black/grey
accessories	ground anchor with adapter (including screw-in bar and adhesive) to be ordered separately







Peripheral components



Safety all over - even in the smallest details!

Although the playing surface is the obvious center of attention in playgrounds, sports and recreational facilities, it is not the only area where impact protection makes a difference. Edge and corner profiles are ideal to avoid trip hazards. Other borders can be used to define lawn areas or to secure hard concrete edges. Bordering elements can be also combined with balancing elements.





EUROFLEX® step blocks

- edging of jumping pits and playgrounds
- boards and peripheral enclosures around sports surfaces
- stairways, e.g. for downhill slopes or slides
- spectator standing or seating areas
- tailor-made seating arrangements

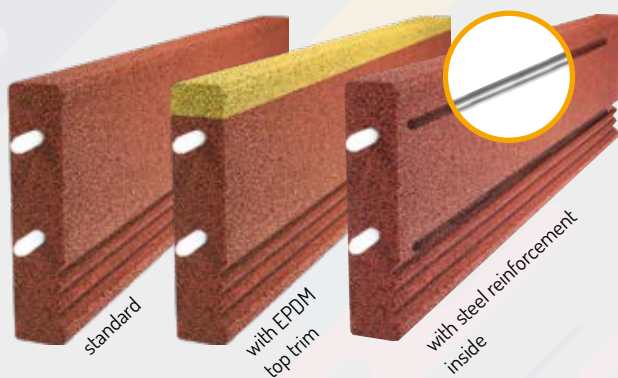


dimensions
 1,000 x 300 x 150 mm
 1,021 / 785 x 300 x 150 mm
 (1/8 circular arc section r=1 m)
 1,000 x 240 x 120 mm

colours red/green/black/grey

EUROFLEX® lawn edging

Ideal bordering for Impact Protection Slabs, sandboxes, walkways or edge trim for trees and bushes.



dimensions 1,000 x 250 x 50

colours red/green/black/grey
 also available with EPDM top trim
 (see page 3)

EUROFLEX® protective edging

Ideal for covering trampoline springs and frames. It provides effective protection against life-threatening injuries that could be caused by impact on the edge area of the trampoline.



dimensions 1,000 x 250 x 50 mm

colours SBR: red/green/black/grey
 EPDM: see page 3

EUROFLEX® edge protectors & perimeter panels

EUROFLEX® Edge Protectors provide reliable covering of all types of concrete edges, minimizing danger of injury in schoolyards, playgrounds and daycare centres.

With our EUROFLEX® perimeter panels, functional areas with concrete can be covered.



dimensions edge protector: 1,000 x 400 x 45 mm
 perimeter panel: 1,000 x 300 x 50 mm,
 leg 160

colours red/green/black/grey



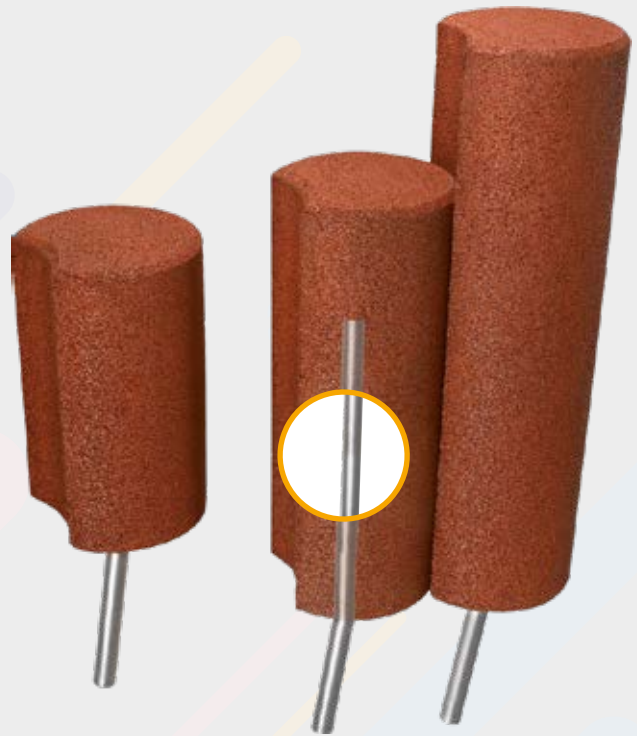
EUROFLEX® rubber palisade

- edging for trees, shrubbery and flower beds
- support for slopes and embankments
- stairways, e.g. for downhill slopes or slides
- balancing walkways

dimensions	total height = 650 mm (rubber part 400 mm + steel anchor 250 mm)
	total height = 850 mm (rubber part 600 mm + steel anchor 250 mm)
	total height = 1050 mm (rubber part 800 mm + steel anchor 250 mm)

colours	red/green/black/grey
----------------	----------------------

quantity required	5 pcs./linear meter
--------------------------	---------------------



The steel anchor is 2/3 in the rubber palisade.
This ensures a particularly high stability.



- 
- 🌿 We turn waste rubber materials into new raw materials and products, making a valuable contribution to waste reduction and the protection of the environment.
 - 🌿 We invest in innovative and environmentally friendly production methods and technologies.
 - 🌿 Our products are subject to continuous quality testing and further development, whereby environmental concerns are given priority. We are always on the lookout for even more environmentally friendly alternatives that enable us to further reduce emissions and protect resources.
 - 🌿 All employees of KRAIBURG Relastec undertake to implement sustainable practices in their daily work and to protect the environment wherever they can.
 - 🌿 We expect the same from our suppliers and constantly monitor their performance.

Environmental management at KRAIBURG Relastec

KRAIBURG Relastec is one of the best known global companies that specialise in the production of technical rubber materials from old tyres. As a recycling specialist, we have for many years been committed to the protection of the environment. Every year, we process and recycle about 85,000 tons of old tyres, closed-cell rubber and rubber production scrap. From these raw materials, we produce high-quality granules based on our internally developed formulations. These granules make up more than 90 % of the material used in our finished products. All our products are 100 % recyclable without loss of quality.

At KRAIBURG Relastec, protecting the environment is a strategic priority. We are convinced that sustainable growth is only achievable if we meet our responsibilities towards the environment. KRAIBURG Relastec has therefore adopted a very simple policy: Protecting the environment is part and parcel of what we do every day!

Our “pro environment” logo stands not only for 40 years of sustainable business practices that protect resources, but emphasises our commitment to product quality and continuous improvement for the protection of the environment beyond the statutory regulations.