

Monasch

by **best
wool**®



“Wool is back, although it was never really gone.

We can see its return in fashion and upholstery fabrics, and especially in modern interiors, which combine sustainability with comfort and luxury.

Our wool carpets excel in all these qualities. Made of the best wool by expert craftsmen with many years of experience, our carpets guarantee top-notch quality. For life.”

Yvar Monasch



BACKGROUND AND PHILOSOPHY

The wool carpets of Monasch by Best Wool are manufactured in the town of Best, in the Netherlands. Best Wool has been designing and producing wool carpets here since 1982, both for the interior market as well as the project market, and both for the Netherlands and abroad.

Our selection is commonly considered one of the most beautiful wool carpet collections available. In order to meet our high quality standards, we exclusively work with the best wool from New Zealand and Europe. This is completely natural when it comes to colour, comfort, insulation, acoustics and resilience. Highly experienced expert craftsmen turn each carpet into a custom project. With a range of twelve qualities, in different colours, sizes and edge finishing, all Monasch carpets can be tailor-made to the specific desires of the customer.

Health

Made exclusively of natural components, our wool carpets are healthy by nature. The notion that a wool rug or carpet could be bad for people with (dust) allergies or asthma is a myth. On the contrary, a wool carpet contributes to a healthier living and sleeping environment. Fine, floating particles such as dust and pollen are 'caught' by the natural scale structure of the wool, and can then be easily removed with a vacuum cleaner.

That leaves the invisible, extremely unhealthy pollution caused by VOCs: Volatile Organic Compounds. Nowadays, these compounds can be found in many items of furniture, and are also released by certain paints and (floor) lacquers, traditional carpets and hard, synthetic floors. VOCs are harmful to the liver, kidneys and the central nervous system. Wool neutralises these VOCs, making it more healthy by nature.

Sustainability

The Monasch carpets are fully circular, thanks to the special Niaga backing (Niaga backwards spells again). This flexible polyester backing can be easily separated from the wool carpet with heating, after which both materials can be recycled and reused separately.

Apart from circularity and recycling, eco-friendly and sustainability are key terms when it comes to living. Wool does well in both aspects. It more or less grows on grass, and after shearing, it grows back automatically. On top of that, wool is a natural, hard-wearing fibre that is biodegradable.

Craftmanship

Artisanal techniques and craftmanship are now being fully appreciated once more – and with good reason. A natural product like wool stands or falls with the craftsmen involved: from shepherds and spinners to our own craftsmen who, with great attention to detail and quality, get the most out of their machines. All Monasch wool carpets are produced in the Netherlands.

Comfort

Wool carpets are the epitome of comfort. They are incredibly soft and warm. Wool has a luxurious appearance and a long lifespan. On top of that, wool carpets insulate sound and heat, are flame retardant and hypoallergenic. Thanks to the scale structure, wool is dirt and stain repellent, which makes it very easy to clean. Water usually does the job.



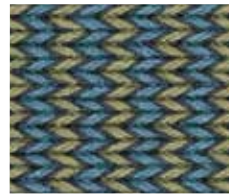
FLASHBACK

The classical fishbone structure with a modern twist, in an eye-catching / bold combination of solid pastel hues. The perfect choice for people who simply must have colour in their dining, bed or living room.

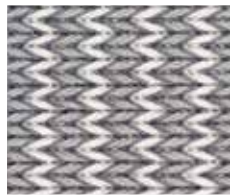
Flashback combines the best of all eras, especially in combination with its flashily-coloured edge.



Orchid



Moss



Seal



Salmon



MASAI

The Masai are Africa's most famous nomad tribe. They primarily live in Kenya and Tanzania, and they are a spectacular sight with their tall bodies, traditional red cloths, braided hair and their many ornaments made of coloured beads. This collection is as colourful as the Masai themselves.

The vibrant combinations create an attractive pattern.



Nude



Ocean



Coral



Giraffe

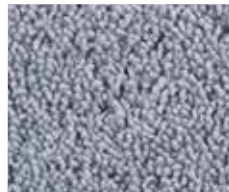


LET'S TWIST

The dance and music of the Twist instantly spark joy. The twisted yarn gives the carpet a casual twist. The tufted piles all curl their own way and add a playful wink to each interior design. The rich, natural hues are as contemporary as they are classic.



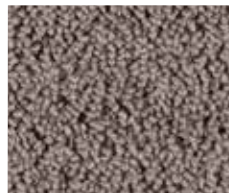
Stork



Halcyon



Sparrow



Pigeon



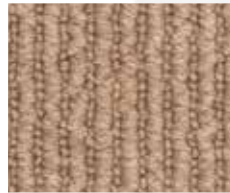
THE HI-LOW

This comfortable carpet features a subtle pattern of high and lower loops.

This provides the carpets with an attractive rhythm, and creates the impression of tone-on-tone colouring. The wool is undyed, so the colours are the natural ones of various European breeds of sheep.



Ashes



Sand



Tin

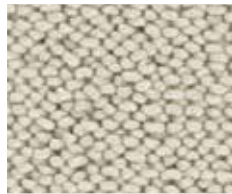




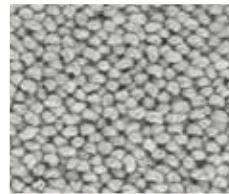
BAD HAIR DAY

Long or short hair, curly or straight; we've all had bad hair days.

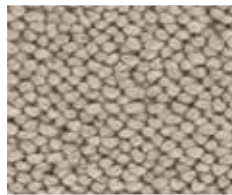
The loops of this carpet seem to criss-cross at random, but this is what gives it its charm. Because the wool yarn was felted, the carpet is a little thicker, and extra comfortable.



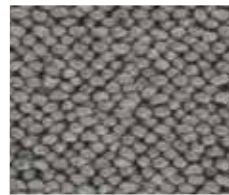
Swan



Storm



Wheat



Steel



THE SWEATER

The name says it all: The Sweater is a carpet with the appearance of a knitted sweater. The characteristic V creates a familiar, yet surprising image. Thanks to the flat structure, this carpet is highly suitable for dining areas.

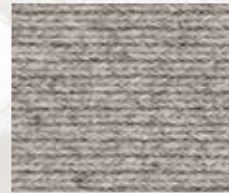
Available in three lightly marbled wool colours.



Beach



Seashell

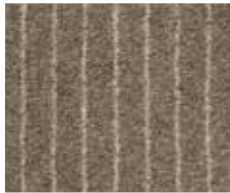


Pebbles

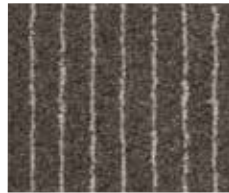


CHALK

Fashionable men's and women's suits often have a pinstripe. It gives off a traditional air, quite chic. Most of all, though, it is ageless. A true classic, reborn into a modern wool carpet. The light stripes only breathe more life into the natural hues.



Boulevard



Route



FAT CAT

An attractive carpet with a fuzziness you simply want to touch. Like fur, the Fat Cat feels amazing to your bare feet, or to enjoy from the couch. The three popular natural hues fit diverse home designs; from classic to modern.



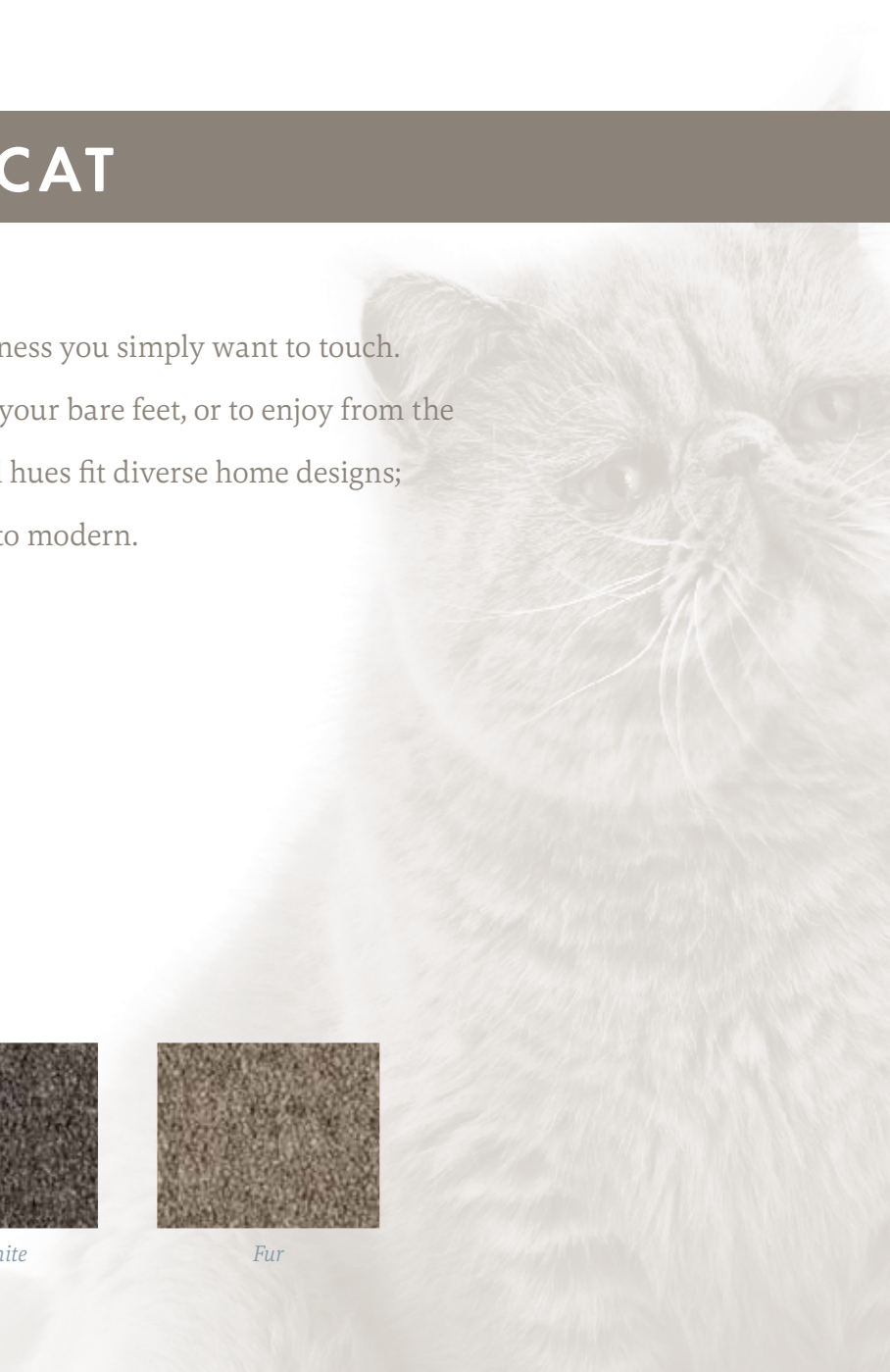
Silver



Graphite



Fur





KNOT MY STYLE

This is what you expect from a wool carpet. Sturdy, yet soft, with a handmade appearance and a beautiful, even structure. The diagonal line gives the straight pattern a playful twist. The rich colour palette adds flavour to every style.



Marble



Ivory



Stone



Linen



SPACED OUT

One of the most colourful and creative carpets in this collection.

The harmonious colour blends are the result of Space Dye, which means the yarns were painted in multiple hues. This results in a subtle sense of depth and a random, yet beautiful pattern of different colours.



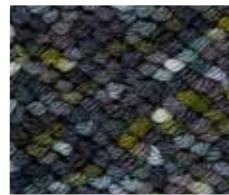
Lava



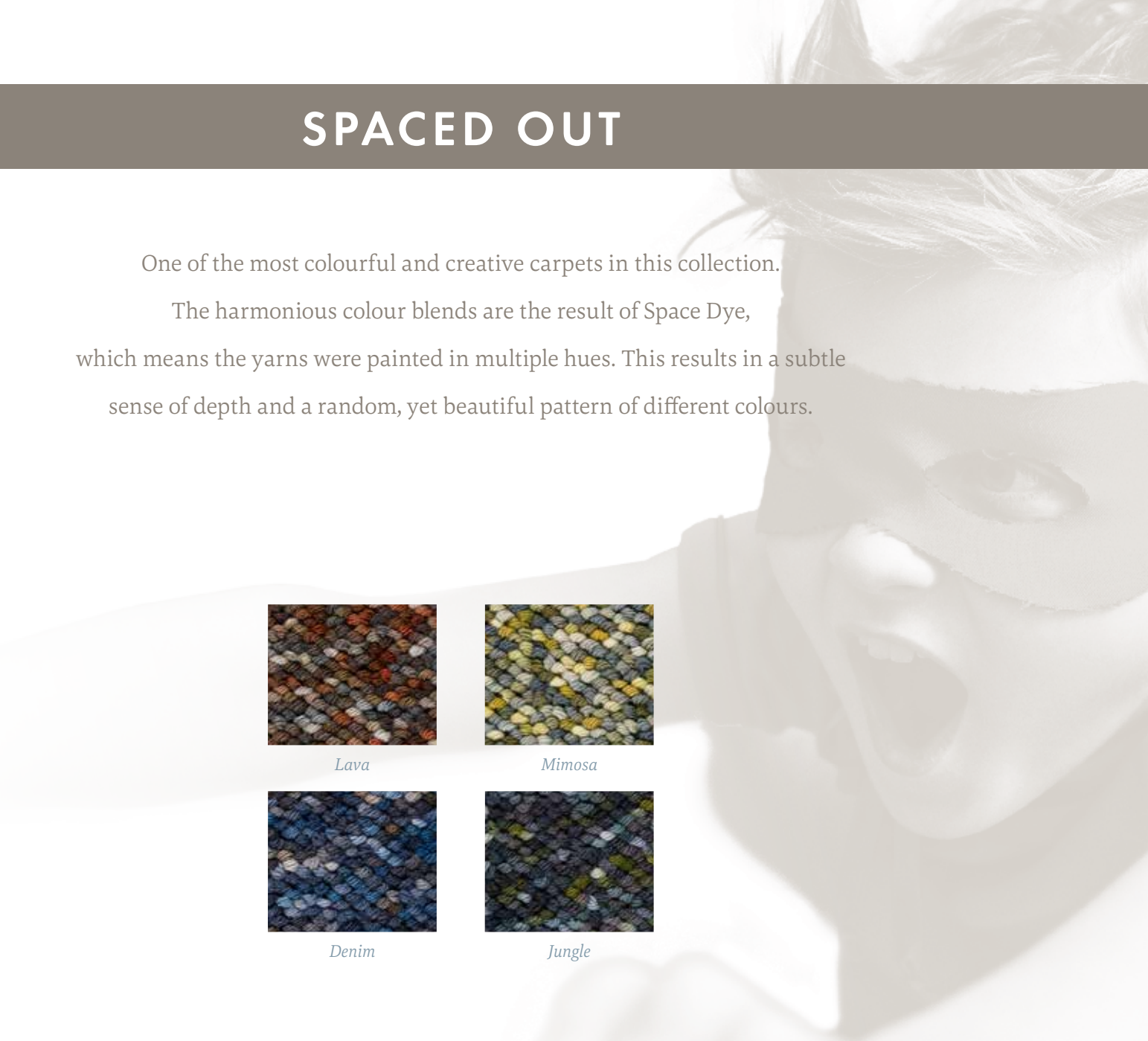
Mimosa



Denim



Jungle



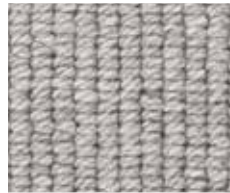


LET IT RIB

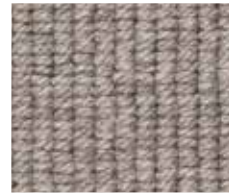
The rib is back in fashion. It is not just a trend, but rather timeless. Just like a Corduroy jacket is always a good choice, the Let It Rib fits any situation. The fine, even rib structure radiates peace. The loops are made of multiple yarns for an extra comfortable surface.



Snow



Mist



Cloud





CRAYONS

Just like a box of crayons, which only reveals its colours when you open it, this carpet only shows its true colours when you stand on it. The light-grey base colour is a little higher in structure than the coloured stripe.

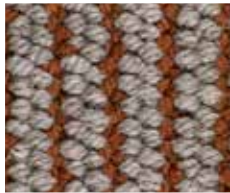
This makes for a surprising effect.



Mustard



Bottle



Rust



Night



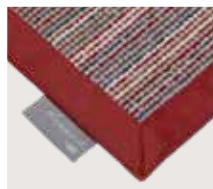
CUSTOM PRODUCTION:

CUSTOM COLOUR, SIZE, SHAPE AND EDGE

- With a selection of twelve qualities in various colours, sizes shapes and edge finishes, all Monasch carpets can be adjusted to anyone's specific wishes.
- Every carpet is provided with an edge finish. The available options are blind, linen, felt and leather finish.



Blind



Linen



Felt



Leather

- The minimum carpet size is 120 x 120 cm, the maximum size is 400 x 500 cm.
- Apart from square and rectangular carpets, Monasch also offers round carpets (Ø max. 400 cm) and – upon request – other organic shapes. These are exclusively available with a blind finish.
- Runners are available with a width of 70 to 120 cm and a maximum length of 700 cm. This will incur an extra charge.
- Other sizes and designs available upon request.

We work with a length and width tolerance of ± 2 cm. This is due to the design and pattern of the carpet.

Stripes or patterns always have a lengthwise direction in the carpet. If another direction is desired, please let us know.

Monasch
by **best wool**®

Monasch by Best Wool | Kanaaldijk 3 | 5683 CR Best | The Netherlands
T +31 499 399100 | info@monaschbybestwool.com | www.monaschbybestwool.com