


CONSTRUCTION STRUCTURE STRUKTUR STRUCTUUR	Tufting 1/10" loop pile Tufté 1/10" bouclé Getuftet 1/10" Schlinge Getuft 1/10" lussenpool	STAIR SUITABILITY ESCALIERS TREPPENEIGNUNG TRAPPENGESCHIKTHEID	EN 1963 A: intensive use
PILE MATERIAL COMPOSITION DU VELOURS POLMATERIAL POOLMATERIAAL	100% PA 6 IMPREL® solution dyed	PERMANENTLY ANTISTATIC ANTISTATIC PERMANENT PERMANENT ANTISTATISCH PERMANENT ANTISTATISCH	ISO 6356 < 2 kV
PRIMARY BACKING SUPPORT TRÄGERMATERIAL TUFTDOEK	Non Woven PES PES non tissé PES Vlies PES Vilt	IMPACT NOISE RATING ISOLATION PHONIQUE TRITTSCHALLVERBESSERUNG GELUIDSISOLATIE	ISO 140-8 24 dB ΔLw
SECONDARY BACKING DOSSIER RÜCKEN TAPIJTRUG	Action Back	SOUND ABSORPTION ABSORPTION PHONIQUE SCHALLABSORPTIONSGRAD GELUIDSABSORPTIE	ISO 354 0,20 αw
PILE WEIGHT POIDS DU VELOURS POLEINSATZGEWICHT POOLGEWICHT	Ca. 625 gr/m ²	THERMAL RESISTANCE RÉSISTANCE THERMIQUE WÄRMEDURCHLASSWIDERSTAND WARMTEDOORLAATWEERSTAND	ISO 8302 0,07 m ² K/W
TOTAL WEIGHT POIDS TOTAL GESAMTGEWICHT TOTAAL GEWICHT	Ca. 1.850 gr/m ²	FASTNESS TO LIGHT SOLIDITÉ A LA LUMIÈRE LICHTECHTHEIT LICHTECHTHEID	ISO 105-B02 ≥ 7
PILE HEIGHT EPAISSEUR DU VELOURS POLHÖHE POOLHOOGTE	Ca. 3,0 mm	COLOUR FASTNESS TO WATER SOLIDITÉ À L'EAU WASSERECHEITHEIT WATERECHEITHEID	EN ISO 105-E01 ≥ 4-5
TOTAL HEIGHT EPAISSEUR TOTAL GESAMTHÖHE TOTALE DIKTE	Ca. 6,0 mm	FIRE RESISTANCE COMPORTEMENT AU FEU BRENNVERHALTEN BRANDGEDRAG	EN 13501-1 Cfl-s1
TUFT DENSITY NOMBRES DE POINTS NOPPENZAHL AANTAL PUNTEN	Ca. 222 000/m ²	RUBBING FASTNESS SOLIDITÉ AU FROTTEMENT REIBECHTHEIT WRIJFECHTHEID	EN ISO 105-X12 ≥ 4
PILE DENSITY DENSITÉ DU VELOURS POLROHDICHTE POOLDICHTHEID	Ca. 0.123 g/cm ³	NUMBER OF COLOURS NOMBRES DE COULEURS ANZAHL FARBEN AANTAL KLEUREN	18
CLASSIFICATION CLASSEMENT KLASSIFIKATION CLASSIFICATIE	EN 1307 33 - LC1	WIDTH LARGEUR BREITE BREDTE	EN ISO 3018 ca. 400 cm (7 colours also in 500 cm)
UPEC E-CHECK AB	U3 P3 E1 CO Certification CSTB: 21/329		
CASTOR CHAIR SUITABILITY CHAISE À ROULETTES STUHLROLLENEIGNUNG ROLSTOELGESCHIKTHEID	EN 985 A: intensive use		



EN14041




21



Balta Industries - Kanegem-
straat 15 - BE 8700 Tielt

DOP: 1011#IEOACL

Textile Floor Covering EN1307
Notified body 2401



www.baltamediabank.com

Suitable for
Allergic Persons

Wall to wall carpet of
allergen-tested
material

3.2-2384/05

REG. NR
2B5F6C88

www.pro-dis.info

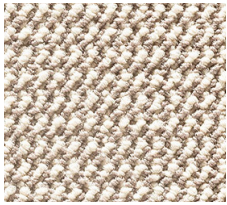
EMISSIONS DANS L'AIR INTÉRIEUR




ENVIRONMENT CARPETS TESTED FOR A HEALTHY LIVING



moquettes touffetées et tissées en lés
<http://evaluation.cstb.fr>



▲ 34



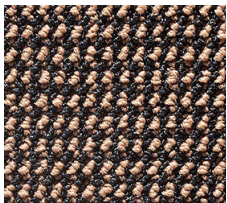
▲ 94



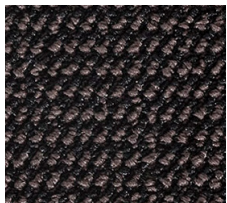
▲ 43



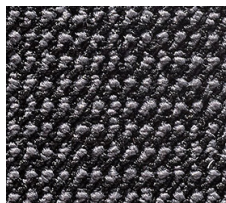
▲ 44



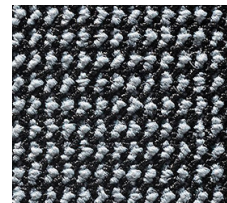
▲ 47



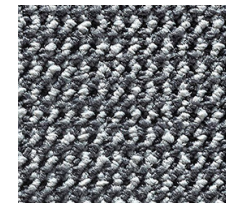
▲ 41



▲ 98



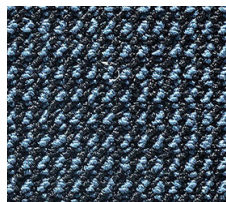
▲ 97



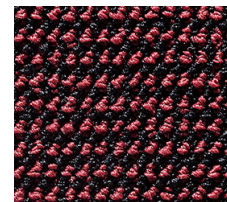
▲ 95



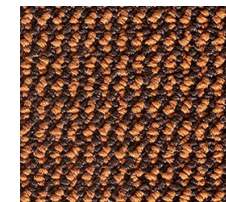
▲ 90



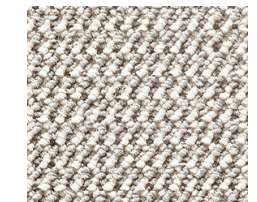
▲ 78



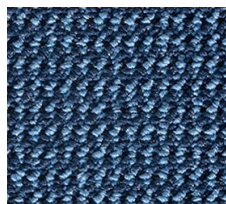
▲ 17



▲ 54



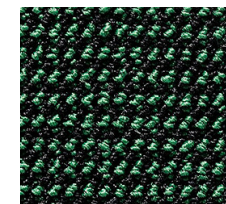
▲ 93



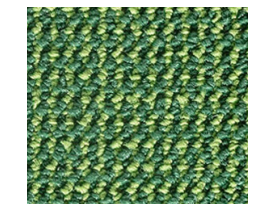
▲ 75



▲ 89



▲ 24



▲ 20