

**CONSTRUCTION STRUCTURE STRUKTUR STRUCTUUR**  
 Tufting 1/10" loop pile  
 Tufté 1/10" bouclé  
 Getuftet 1/10" Schlinge  
 Getuft 1/10" lussenpool

**PILE MATERIAL COMPOSITION DU VELOURS POLMATERIAL POOLMATERIAAL**  
 100% PA 6 IMPREL®

**PRIMARY BACKING SUPPORT TRÄGERMATERIAL TUFTDOEK**  
 Non woven PES  
 Non woven PES  
 Vlies PES  
 Non woven PES

**SECONDARY BACKING DOSSIER RÜCKEN TAPIJTRUG**  
 Action Back

**PILE WEIGHT POIDS DU VELOURS POLEINSATZGEWICHT POOLGEWICHT**  
 Ca. 460 gr/m<sup>2</sup>

**TOTAL WEIGHT POIDS TOTAL GESAMTGEWICHT TOTAAL GEWICHT**  
 Ca. 1.530 gr/m<sup>2</sup>

**PILE HEIGHT EPAISSEUR DU VELOURS POLHÖHE POOLHOOGTE**  
 Ca. 2,5 mm

**TOTAL HEIGHT EPAISSEUR TOTALE GESAMTHÖHE TOTAAL DIKTE**  
 Ca. 5 mm

**TUFT DENSITY NOMBRES DE POINTS NOPPENZAHL AANTAL PUNTEN**  
 Ca. 205 000/m<sup>2</sup>

**PILE DENSITY DENSITÉ DU VELOURS POLROHDICHTHEIT POOLDICHTHEID**  
 Ca. 0.120 g/cm<sup>3</sup>

**CLASSIFICATION CLASSEMENT KLASSIFIKATION CLASSIFICATIE**  
 EN 1307  
 33 - LC1

**UPEC** U3 P3 E1 C0  
 Certification CSTB:10/271

**PRODIS/GUT** CC5E2518

**CASTOR CHAIR SUITABILITY CHAISE À ROULETTES STUHLROLLENEIGNUNG ROLSTOELGESCHIKTHEID**  
 EN 985  
 A: intensive use

**STAIR SUITABILITY ESCALIERS TREPPENEIGNUNG TRAPPENGESCHIKTHEID**  
 EN 1963  
 A: intensive use

**PERMANENTLY ANTISTATIC ANTISTATIQUE PERMANENT PERMANENT ANTISTATISCH PERMANENT ANTISTATISCH**  
 ISO 6356  
 < 2 kV

**IMPACT NOISE RATING ISOLATION PHONIQUE TRITTSCHALLVERBESSERUNG GELUIDSISOLATIE**  
 ISO 140-8  
 21 dB ΔLw

**SOUND ABSORPTION ABSORPTION PHONIQUE SCHALLABSORPTIONSGRAD GELUIDSABSORPTIE**  
 ISO 354  
 0.15 αw

**THERMAL RESISTANCE RÉSISTANCE THERMIQUE WÄRMEDURCHLASSWIDERSTAND WARMTEDOORLAATWEERSTAND**  
 ISO 8302  
 0.06 m<sup>2</sup> K/W

**FASTNESS TO LIGHT SOLIDITÉ A LA LUMIÈRE LICHTECHTHEIT LICHTECHTHEID**  
 ISO 105-B02  
 ≥ 5-6

**COLOUR FASTNESS TO WATER SOLIDITÉ À L'EAU WASSERRECHTHEIT WATERECHTHEID**  
 EN ISO 105-E01  
 ≥ 4-5


**FIRE RESISTANCE COMPORTEMENT AU FEU BRENNVERHALTEN BRANDGEDRAG**  
 EN 13501-1  
 Bfl-s1 (if glued)

**RUBBING FASTNESS SOLIDITÉ AU FROTTEMENT REIBECHTHEIT WRIJFECHTHEID**  
 EN ISO 105-X12  
 ≥ 4

**NUMBER OF COLOURS NOMBRES DE COULEURS ANZAHL FARBEN AANTAL KLEUREN**  
 21

**WIDTH LARGEUR BREITE BREEDTE**  
 EN ISO 3018  
 ca. 400 cm



EN14041  
  
 16  
 Balta Industries - Kanegemstraat 15  
 BE 8700 Tielt  
**DOP: 1011#IE0ABV**  
 Textile Floor Covering EN1307  
 Notified body 2401  
  
 www.baltamediabank.com



moquettes touffetées et tissées en lés  
<http://evaluation.cstb.fr>



# Master<sub>AB</sub>

The Long Play collection



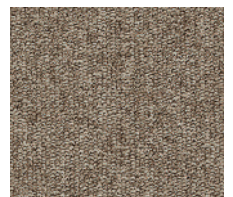
▲ 33



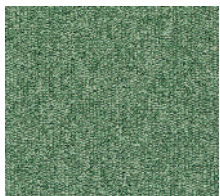
▲ 37



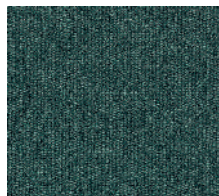
▲ 36



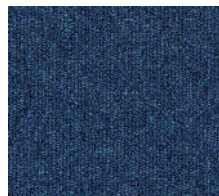
▲ 45



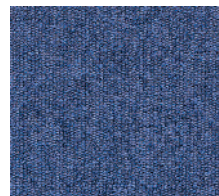
▲ 27



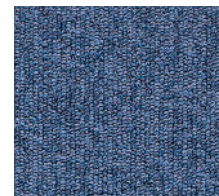
▲ 490



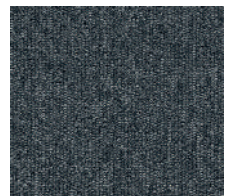
▲ 370



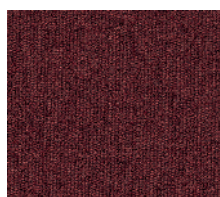
▲ 76



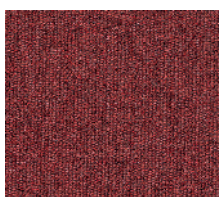
▲ 350



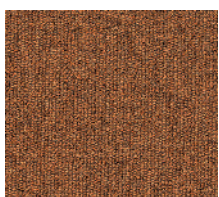
▲ 297



▲ 116



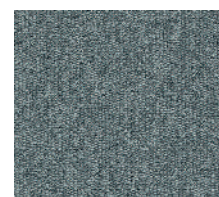
▲ 11



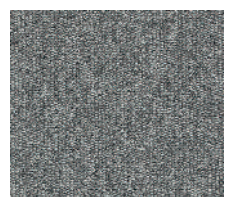
▲ 66



▲ 55



▲ 960



▲ 196



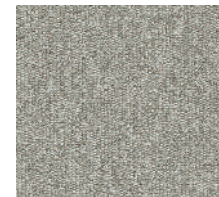
▲ 198



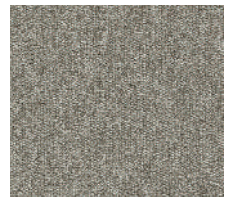
▲ 194



▲ 880



▲ 900



▲ 950