



“myReference,,

CREATION 70

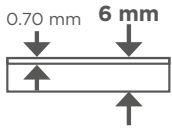
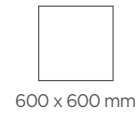
LOOSELAY

**Gerflor**  
theflooringgroup



# CREATION 70

## LOOSELAY



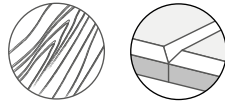
### PUR+ MATT



Easy maintenance

### 4D DESIGN

#### STRUCTURED EMBOSS & BEVEL



Ultra realistic surface

#### MATT SURFACE



Natural look

#### CRISTAL WEAR LAYER



High definition design & color

#### MIX&MATCH DESIGNS



Easy mix&match of designs & formats

### DUO CORE TECHNOLOGY

#### 1 RESILIENT COMFORT CORE

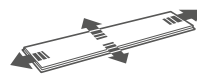


Noise absorption



Soft underfoot

#### 2 RIGID CORE



The best stability / Fiber glass inside



Renovation ceramic 5 mm joint

### GRIP-WAVE BACKLAYER

#### ANTI-SKID BACKING



Super strong suction to the subfloor

Air circulation: better acoustic

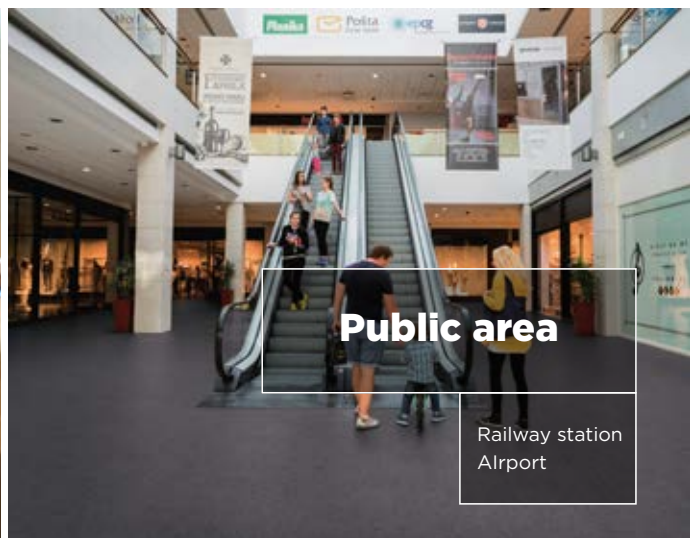
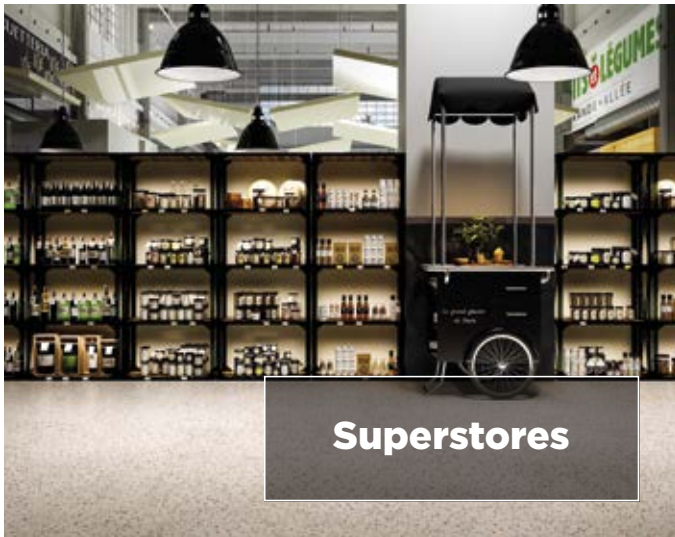
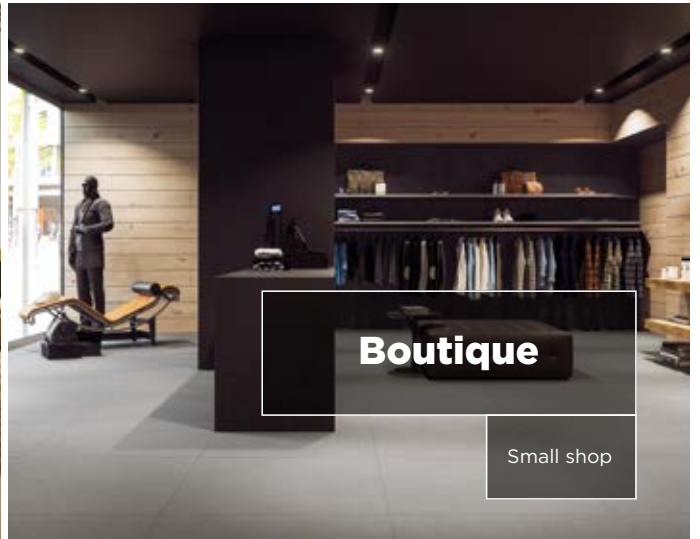
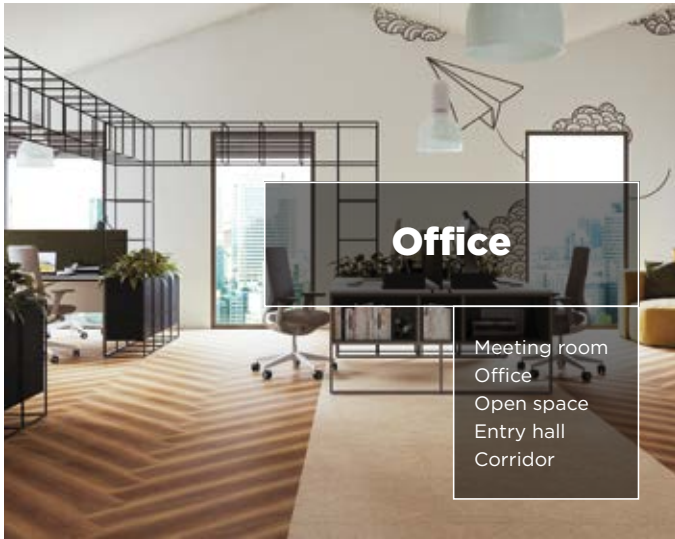
Humidity circulation: moisture resistance



Easily removable: renovation


# CREATION 70

## ONE SOLUTION FOR EVERY MARKET APPLICATION




# CREATION 70

## 3 CONSTRUCTIONS TO MATCH YOUR NEEDS




### GLUE DOWN

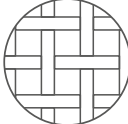
2.5 mm / 0.7 mm




Permanent adhesive installation



Ideal installation on new construction & heavy refurbishment




Mix & match




XL planks

**70 DESIGN COLORS**




### CLIC - REVOLUTION

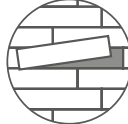
6 mm / 0.7 mm




Free adhesive installation




Fast and easy renovation  
Ceramic joint < 4 mm / 1 mm




Replacement one plank or tile



Watertight joint




Acoustic underlay




XL planks

**35 DESIGN COLORS**




### LOOSELAY


6 mm / 0.7 mm




Removable installation using pressure sensitive adhesive



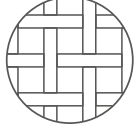
Fast and easy renovation  
Ceramic joint < 5 mm / 1 mm




Replacement one plank or tile



Ideal installation on raised access floors



Mix & match



XL square tile

**21 DESIGN COLORS**

CREATION 70 LOOSELAY  
WOOD UNIVERSE



1054 Onka Honey

229x1220 mm



1075 Diesel Nala

229x1220 mm



1074 Diesel Burnt

229x1220 mm



TATAMI SAVANE





0356 Denim Wood

229x1220 mm



0538 Midwest

229x1220 mm



0358 Moon Island

229x1220 mm



0357 Portobello

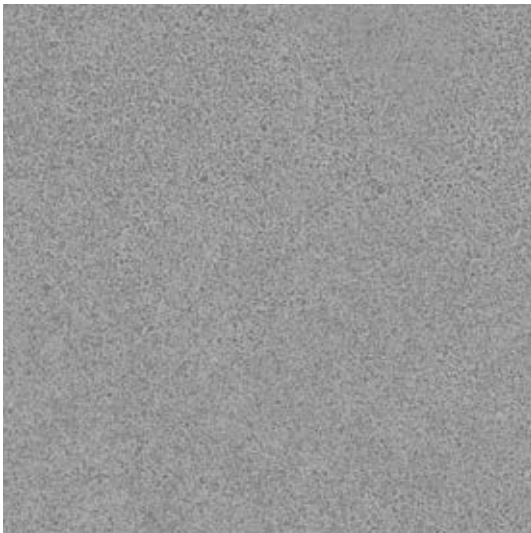
229x1220 mm

CREATION 70 LOOSELAY  
MINERAL UNIVERSE



1060 Pure Concrete Light

914x914 mm



1061 Pure Concrete Medium

914x914 mm



1062 Pure Concrete Dark

914x914 mm

8

DESIGN SHADE VARIATION:



Light



Medium



High



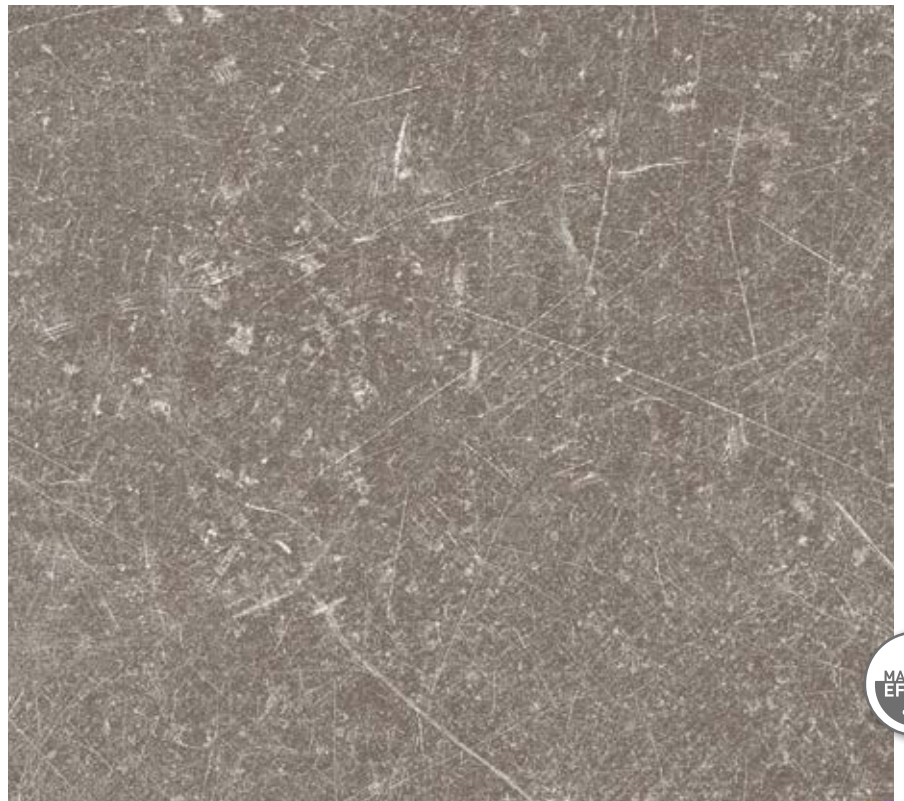
PURE CONCRETE MEDIUM



PURE CONCRETE LIGHT



PURE CONCRETE DARK



0087 Dock Taupe

914x914 mm



DOCK GREY



0085 Dock Grey

914x914 mm

CREATION 70 LOOSELAY  
TEXTILE UNIVERSE



1077 Tatami Savane

600x600 mm



1078 Tatami Raffia

600x600 mm



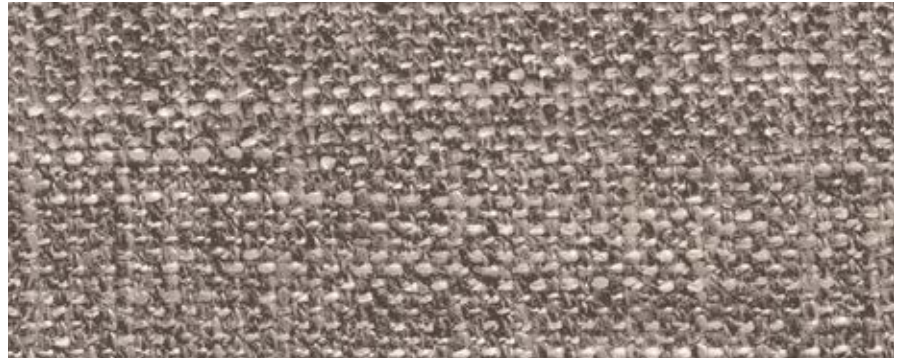
1079 Tatami Smoked

600x600 mm



TATAMI RAFFIA / MOON ISLAND





1083 Gentleman Taupe

229x1220 mm



1081 Gentleman Indigo  
600x600 mm



1058 Gentleman Grey  
600x600 mm



1082 Gentleman Peppermint  
600x600 mm



1080 Gentleman Garance  
600x600 mm



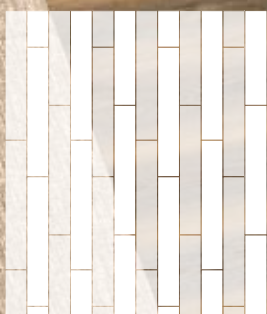
1076 Gentleman Tweed

229x1220 mm



GENTLEMAN GREY /  
GENTLEMAN PEPPERMINT /  
GENTLEMAN GARANCE

# EXPLORE THE WORLD OF POSSIBILITIES



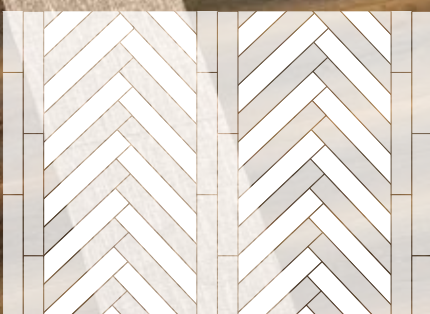
SLIM STRIPES



FENCE



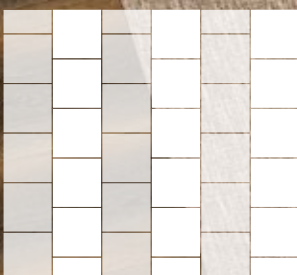
ACCORDEON



RYTHME



TRICOT



FAT STRIPES



PIANO



TARGET

FENCE





GENTLEMAN TAUPE / DIESEL BURNT

**QUICK & EASY TO INSTALL**



INSTALLATION WITH TACKIFIER



PRESSURE ROLLER



APPLY PLANKS OR TILES

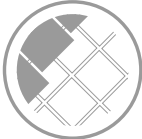


EASY TO REPAIR

**INSTALLATION**



OVER RAISED ACCESS FLOOR



OVER CERAMIC TILES

*Please refer to Gerflor's installation guidelines*



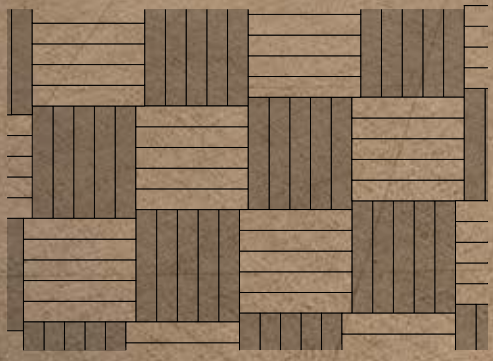
RYTHME



# New York University Library



TRICOT





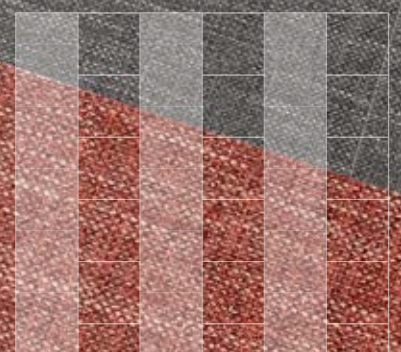
SLIM STRIPES







FAT STRIPES



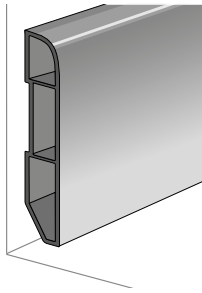
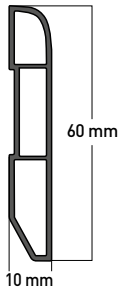


FENCE



# CREATION 70 LOOSELAY A FULL SET OF FINISHES

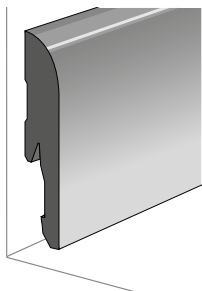
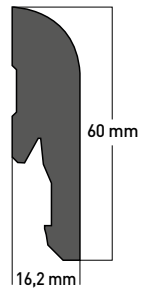
## I DESIGN SKIRTINGS



### VINYL DESIGN SKIRTING

Ref. 6086

- Water resistant
- Can be adhesived



### MDF DESIGN SKIRTING

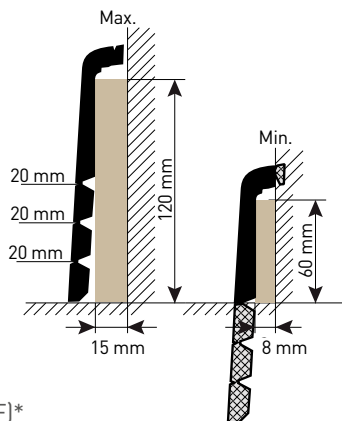
Ref. 5947

- Can be clipped (ref. 5948)
- Nailed or adhesived



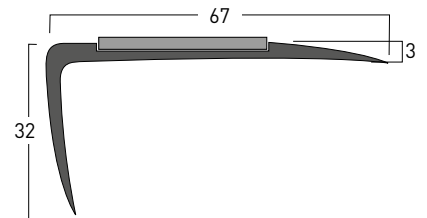
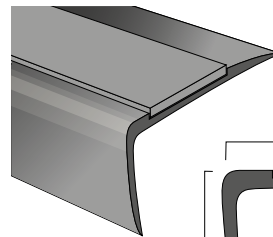
Also available in white  
can be painted over

## I OTHER SKIRTINGS



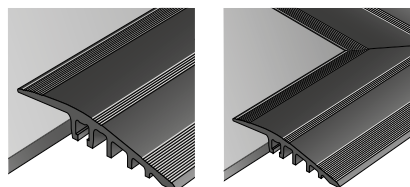
Cover skirting (MDF)\*  
Ref. 2550

## I STAIRNOSING SOLUTION



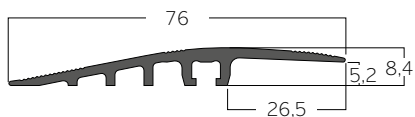
Nosing T67 (aluminium)  
Ref. 0503

## I PROFILES

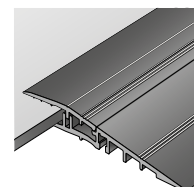


0505

1513



RAMP 5-6MM (aluminium)  
Ref. 0505



0609

0629



LOOSELAY RAMP 5-6MM (aluminium)  
Ref. 0609

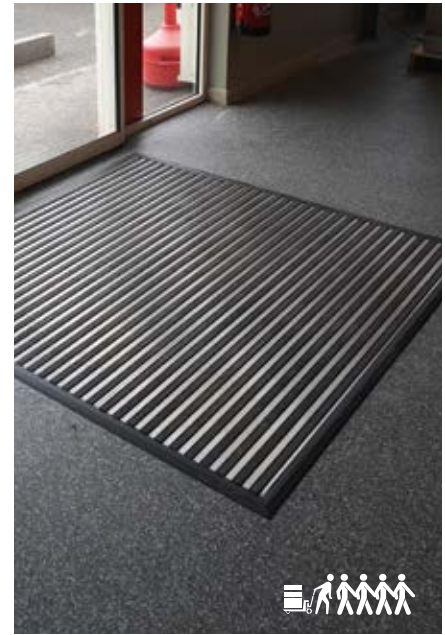
**I ENTRANCE MATS / 3 TRAFFIC LEVELS** .....



**QUICK MAT\***  
Ref. 8550



**LOOSELAY ROMAT GT INSERT KIT**  
Ref. 1719



**KIT ESPLANADE 9000**  
Ref. 1700

**I FLOOR PROTECTION** .....



Ref. 058X

**FOR MORE DETAILS** .....  
visit [gerflor.com](http://gerflor.com)







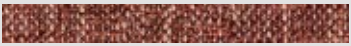









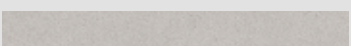






LVT finishes brochure

\*Please contact Romus [www.romusworld.com](http://www.romusworld.com), part of Gerflor group.

# CREATION 70 LOOSELAY

## CROSS REFERENCES

SCANS	COLOR DESIGN	LOOSELAY INSTALLATION	CLIC INSTALLATION	GLUE DOWN INSTALLATION	SKIRTING
	<b>DENIM WOOD - 0356</b>	229x1220 mm		152x914 mm	S026
	<b>DIESEL BURNT - 1074</b>	229x1220 mm			WHITE
	<b>DIESEL NALA - 1075</b>	229x1220 mm			WHITE
	<b>DOCK GREY - 0085</b>	914x914 mm	391x729 mm	457x914 mm	S111
	<b>DOCK TAUPE - 0087</b>	914x914 mm	391x729 mm	457x914 mm	S020
	<b>GENTELMAN PEPPERMINT - 1082</b>	600x600 mm			WHITE
	<b>GENTELMAN GARANCE - 1080</b>	600x600 mm			WHITE
	<b>GENTELMAN GREY - 1058</b>	600x600 mm	391x729 mm		WHITE
	<b>GENTELMAN INDIGO - 1081</b>	600x600 mm			WHITE
	<b>GENTELMAN TAUPE - 1083</b>	229x1220 mm			WHITE
	<b>GENTELMAN TWEED - 1076</b>	229x1220 mm			WHITE
	<b>MIDWEST - 0538</b>	229x1220 mm	214x1239 mm	152x914 mm	S039
	<b>MOON ISLAND - 0358</b>	229x1220 mm	214x1239 mm	152x914 mm	S034
	<b>ONKA HONEY - 1054</b>	229x1220 mm	242x1461 mm		S121
	<b>PORTOBELLO - 0357</b>	229x1220 mm	214x1239 mm	152x914 mm	S053
	<b>PURE CONCRETE DARK - 1062</b>	914x914 mm	391x729 mm		WHITE
	<b>PURE CONCRETE LIGHT - 1060</b>	914x914 mm	391x729 mm		WHITE
	<b>PURE CONCRETE MEDIUM - 1061</b>	914x914 mm	391x729 mm		WHITE
	<b>TATAMI RAFFIA - 1078</b>	600x600 mm			WHITE
	<b>TATAMI SAVANE - 1077</b>	600x600 mm			WHITE
	<b>TATAMI SMOKED - 1079</b>	600x600 mm			WHITE

WHITE = S001

DESCRIPTION / BESCHREIBUNG / BESCHRIJVING / DESCRIPTION / DESCRIPCIÓN / DESCRIÇÃO / DESCRIZIONE

Total Thickness / Gesamtdicke / Totale dikte / Épaisseur totale / Espesor total / Espessura total / Spessore totale	EN ISO 24346 [EN 428]	mm	6.00		
	ASTM F386-02	inch	0.24		
Thickness of the wearlayer / Dicke der Nuttschicht / Dikte van de slijtlaag / Épaisseur couche d'usure / Espesor capa de uso / Espessura camada de desgaste / Spessore strato di usura	EN ISO 24340 [EN 429]	mm	0.70		
	ASTM F410-02	inch	0.03		
Weight / Flächengewicht / Gewicht / Poids / Peso / Peso / Peso	EN ISO 23997 [EN 430]	g/m <sup>2</sup>	10000		
Size / Format / Afmetingen / Format / Dimensiones / Dimensões / Dimensione	ISO 24342 [EN 427]	mm	229 x 1220	600 x 600	914 x 914
	ASTM F 536	inch	9" x 48"	23.6" x 23.6"	36" x 36"
Number of planks / tiles and sqm per box	-	-	6	4	2

CLASSIFICATION / KLASSIFIKATION / CLASSIFICATIE / CLASSIFICATION / CLASIFICACIONES / CLASSIFICAÇÕES / CLASSIFICAZIONI

Norm/Product Specification / Produktnorm / Technische eigenschappen / Norme/Spécification produit / Normas / Normas / Norma prodotto	-	-	EN ISO 10582 [EN 649]		
	ASTM F 1700-04	-	Class III Type B		
European Classification / Europäische Klassifizierung / Europese classificatie / Classement européen / Clasificación europea / Classificação Europeia / Europea	EN ISO 10874 [EN 685]	Class	34 - 43		
Classement UPEC	-	-	Pour pose dans des locaux classés U4P3E1/2C2		
Fire Rating / Brandverhalten / Brand classificatie / Classement Feu / Fuego / Fogo / Reazione al fuoco	EN 13 501-1	Class	Bfl-s1		
Static Electrical Propensity / Begehaufladung / Elektrische eigenschappen / Potentiel de charge / Comportamiento electrostático / Comportamento electrostático / Resistenza elettrica	EN 1815	kV	< 2		
Slip Resistance Wet / Rutschhemmung / Anti-slip / Glissance humide / Deslizamiento húmedo / Escorregamento húmido / Scivolosità umida <sup>(1)</sup>	DIN 51130 /BGR 181	Class	R10		

PERFORMANCES / TECHNISCHE EIGENSCHAFTEN / TESTRESULTAAT / PERFORMANCE / CUALIDADES TÉCNICAS / PERFORMANCES / CARATTERISTICHE TECNICHE

Wear Resistance / Verschleißverhalten / Slijtvastheid / Résistance à l'usure / Abrasión / Abrasão / Resistenza all'abrasione	EN 660.2	mm <sup>3</sup>	≤ 2.0		
Wear Group / Verschleißgruppe / Groep slijtvasheid / Groupe d'abrasion / Grupo de abrasión / Grupo de abrasão / Gruppo di abrasione	QB 30	group	T		
Type Binder content / Bindemittelgehalt / Teneur en agent liant / Contenido en ligante / Conteúdo em ligante	ISO 10582	group	I		
Dimensional stability (norm) / Maßstabilität (norm) / Maatvastheid (norm) / Stabilité dimensionnelle (norme) / Estabilidad Dimensional (Exigencial) / Estabilidade dimensional (normalização) / Stabilità dimensionale (requisito normativo)	EN ISO 23999 [EN 434]	%	≤ 0.15		
Dimensional stability (average measured value) / Maßstabilität (Durchschnittswert) / Stabilité dimensionnelle (valeur moyenne mesurée) / Maatvastheid (gemeten gemiddelde waarde) / Estabilidad Dimensional (Valor medido) / Estabilidade Dimensional (Valor medio) / Stabilità dimensionale (rilevata)	-	%	≤ 0.05		
Residual Indentation / Resteindruck / Indrukbelasting / Poinçonnement statique rémanent / Punzonamiento / Punçoamento / Impronta	EN ISO 24343-1 [EN 433]	mm	≤ 0.10		
Impact sound insulation / Trittschallverbesserungsmaß / Geluidsisolatie / Isolation acoustique bruits de chocs / Acústica / Isolamento acústico	EN ISO 717-2	dB	9		
Room Impact / Raumschall / Loopgeluid / Sonorité à la marche / Rumore al calpestio / Sonoridad en la pisada / Sonoridade ao andar	NF S 31074	dB	73		
Castor chair test / Stuhrollenbeanspruchung / Rotweerstand bureaustoelen / Essai de la chaise à roulettes / Determinación del efecto de una silla con ruedas / Resistência a cadeiras de rodas / Resistenza al passaggio di sed (Type W)	ISO 4918 [EN 425]	-	OK		
Thermal Conductivity / Wärmeleitfähigkeit / Thermische weerstand / Conductivité thermique / Conductividad térmica / Contutividade térmica / Resistencia termica / Värmeledningsmotstånd / Varmemotstånd	EN ISO 10456 [EN12524]	W/(m.K)	0.25		
Colour Fastness / Lichtechtheit / Lichtechtheid / Solidité lumière / Resistencia a la luz / Estabilidade das cores / Solidità alla luce	EN 20 105 - B02	degree	> 6		
Surface Treatment / Oberflächenvergütung / Oppervlaktebehandling / Traitement de surface / Tratamiento de superficie / Tratamento de superficie / Trattamento di superficie	-	-	PUR+ Matt		
Chemical Products Resistance / Verhalten gegenüber Chemikalien / Chemische bestendigheid / Résistance aux produits chimiques / Resistencia a los productos químicos / Resistência aos produtos químicos / Resistenza ai prodotti chimici <sup>(2)</sup>	EN ISO 26987 [EN 423]	-	OK		

ENVIRONMENT/INDOOR AIR QUALITY / UMWELT/RAUMLUFTQUALITÄT / ENVIRONNEMENT/QUALITE DE L'AIR INTERIEUR / MEDIO AMBIENTE/CALIDAD INTERIOR DEL AIRE INTERIOR / MEIO AMBIENTE/QUALIDADE DO AR INTERIOR

TVOC after 28 days / TVOC (28 Tage) / TVOC (28 dagen) / TVOC après 28 jours / TVOC (28 dias) / TVOC (28 dias) / TVOC (28 giorni) / TVOC (28 dagar) / TVOC (28 dager)	ISO 16000-6	µg/m <sup>3</sup>	< 10		
--	-------------	-------------------	------	--	--

CE MARKING / CE KENNZEICHNUNG / EG\_CONFORMITEITSMERK / MARQUAGE CE / MARCA DE CONFORMIDAD CE / MARCA DE CONFORMIDADE CE / MARCATURA CE DI CONFORMITA

CE	EN 14041	-				
----	----------	---	---	---	---	---

(1) Ramp test with oil / Schiefe Ebene / Plan incliné avec huile

(2) Beständig gegenüber nicht färbenden alkoholhaltigen Handdesinfektionsmitteln, Haushaltschemikalien und verdünnten Säuren und Laugen bei kurzzeitiger Einwirkung.

PACKAGING

Product size (mm)	Tiles-planks / Box	Sqm / Box	Box weight (kg)	Pallet sizes (mm)	Sqm / Pallet	Pallet weight (kg)
229 x 1220	6	1.68	17.2	1000 x 1260 x 662	80.5	849
600 x 600	4	1.44	14.9	630 x 1260 x 895	72.0	760
914 x 914	2	1.67	17.6	950 x 950 x 890	80.3	867

**Gerflor International**  
Tel: +33 (0)4 74 05 40 00  
Fax: +33 (0)4 74 05 03 13  
e-mail: gerflorcontract@gerflor.com

**Visualize your reference**



[interiordesigner.gerflor.com](http://interiordesigner.gerflor.com)

**30 years experience**  
Since 1985

**Manufacturer**  
3 LVT Factories

**World Class Logistics**  
12 Logistics Hubs

**Gerflor Design Centre**  
Exclusive Designs



**“Serenity,,**  
Elodie - **End User**



**“Time saving,,**  
Mika - **Installer**



**“Unique Design,,**  
Pierre - **Architect**



**“Confidence,,**  
Claire - **Store Manager**



**“Reliability,,**  
Lucas - **Distributor**

That's why Gerflor is our **Reference**

**Gerflor**<sup>®</sup>  
theflooringgroup