

# DLW LINOLEUM



Creative by Nature

---



**Gerflor**<sup>®</sup>  
theflooringgroup



<b>DLW, THE GENUINE LINOLEUM BRAND .....</b>	<b>4-5</b>
<b>KEY BENEFITS OF LINOLEUM .....</b>	<b>6-7</b>
<b>BIO BASED COMPOSITION .....</b>	<b>8-9</b>
<b>CIRCULAR ECONOMY .....</b>	<b>10</b>
<b>CARBON FOOTPRINT .....</b>	<b>11</b>
<b>CRADLE TO CRADLE CERTIFICATION .....</b>	<b>12-13</b>
<b>NEOCARE™</b>	
<b>THE NEW EXCLUSIVE SURFACE PROTECTION ..</b>	<b>14-17</b>
• Indoor air quality	15
• Natural Design with realistic matt effect	15
• Easy to clean	16
• Hygiene	16
• Durable	17
<b>THE MOST COMPLETE OFFER .....</b>	<b>18</b>
<b>COMPACT LINOLEUM .....</b>	<b>20-38</b>
• Product range	20
• Description text	36
• Technical data	38
<b>ACOUSTIC LINOLEUM .....</b>	<b>39-43</b>
• Product range	40
• Description text	42
• Technical data	43
<b>TECHNIC LINOLEUM .....</b>	<b>44-47</b>
• Product range	45
• Description text	46
• Technical data	47
<b>MORE THAN A FLOOR .....</b>	<b>48-49</b>
<b>CLEANING INSTRUCTIONS .....</b>	<b>50-51</b>
<b>MIX &amp; MATCH .....</b>	<b>52-53</b>
<b>THE PROOF IS IN THE CUSTOMER EXPERIENCE ....</b>	<b>54-55</b>

# DLW, THE GENUINE LINOLEUM BRAND



## SERVING ARCHITECTURE SINCE 1882

- **1863:** Invention of Linoleum by Sir Frederic Walton.
- **1882:** Foundation of DLW, the first linoleum brand in Germany and its factory is based in Delmenhorst (Germany)



**HISTORICISM**  
1913  
Gabriel von Seidl  
Cityhall, **Bremen**



**BAUHAUS**  
1927  
Mies van der Rohe  
Gropius  
Weissenhofsiedlung,  
**Stuttgart**



PART OF  
GERFLOR GROUP  
SINCE 2018



**MODERN  
MOVEMENT**  
1957

Le Corbusier  
Heilsberger apartments,  
**Berlin**



**CONTEMPORARY -  
MARS 1976 MOVEMENT**  
1992

Jean Nouvel  
Hôtel Les Thermes, **Dax**



**CONTEMPORARY -  
EXPERIMENTAL  
& MINIMALISM**  
2008

Herzog & Demeuron  
Olympic Stadium, **Beijing**

# KEY BENEFITS OF LINOLEUM



## Durability

- Inlaid product construction  
> **Long lasting appearance**
- Hardwearing  
> **Adapted to high pedestrian and mechanical traffic**
- Micro scratch resistance  
> **No problem with tearings and scratches**



## Health

- Third part certified antiviral and antibacterial activity  
> **Hygienic solution**
- Very low emissions  
TVOC < 10 microgram/m<sup>3</sup> after 28 days  
> **Best indoor air quality**
- Neocare™ surface treatment (dirt and stain barrier)  
> **Easy to clean**



## Comfort

- Resilient and soft surface  
> **Child friendly**
- Up to 19dB sound insulation  
> **Acoustic comfort**
- Suitable for underfloor heating  
> **Thermal comfort**



## Design

- Selection of designs and colors  
> **Freedom of choice**
- Matt effect  
> **Contemporary finish**
- Mix and match possibilities  
> **Creativity and differentiation**

# BIO BASED COMPOSITION

✓ **98%**  
BIO BASED



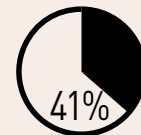
3%  
COLORED PIGMENTS

✓ **76%**  
RAPIDLY  
RENEWABLE



5%  
RESIN

Up to  
✓ **40%**  
RECYCLED  
CONTENT



41%  
LINSEED OIL



## ECO LABELS

QUALITY

LIFE CYCLE ANALYSIS

INDOOR AIR QUALITY





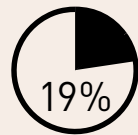
WOOD FLOUR



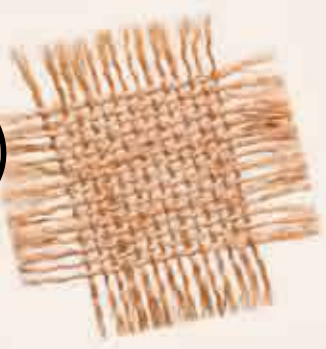
CORK



JUTE



LIMESTONE



# CIRCULAR ECONOMY

**DLW Linoleum products are developed according to a Life cycle analysis (LCA) methodology:**

- To assess the existing product impact on the environment through all stages of its life cycle.
- To develop new products specifically designed to reduce their environmental impact.



# CARBON NEUTRAL\*

**Our CO<sub>2</sub> emissions are neutral during the first stages of the product life cycle, from the growing of raw materials to the end of the production process.**

All the details can be found in our Environmental Product Declaration, which has been third part certified (EVEA laboratory) according to the guidelines of international certification body (UL).

[\*] From Cradle to Gate: includes raw materials and manufacturing process (A1-A3 stages of EPD)

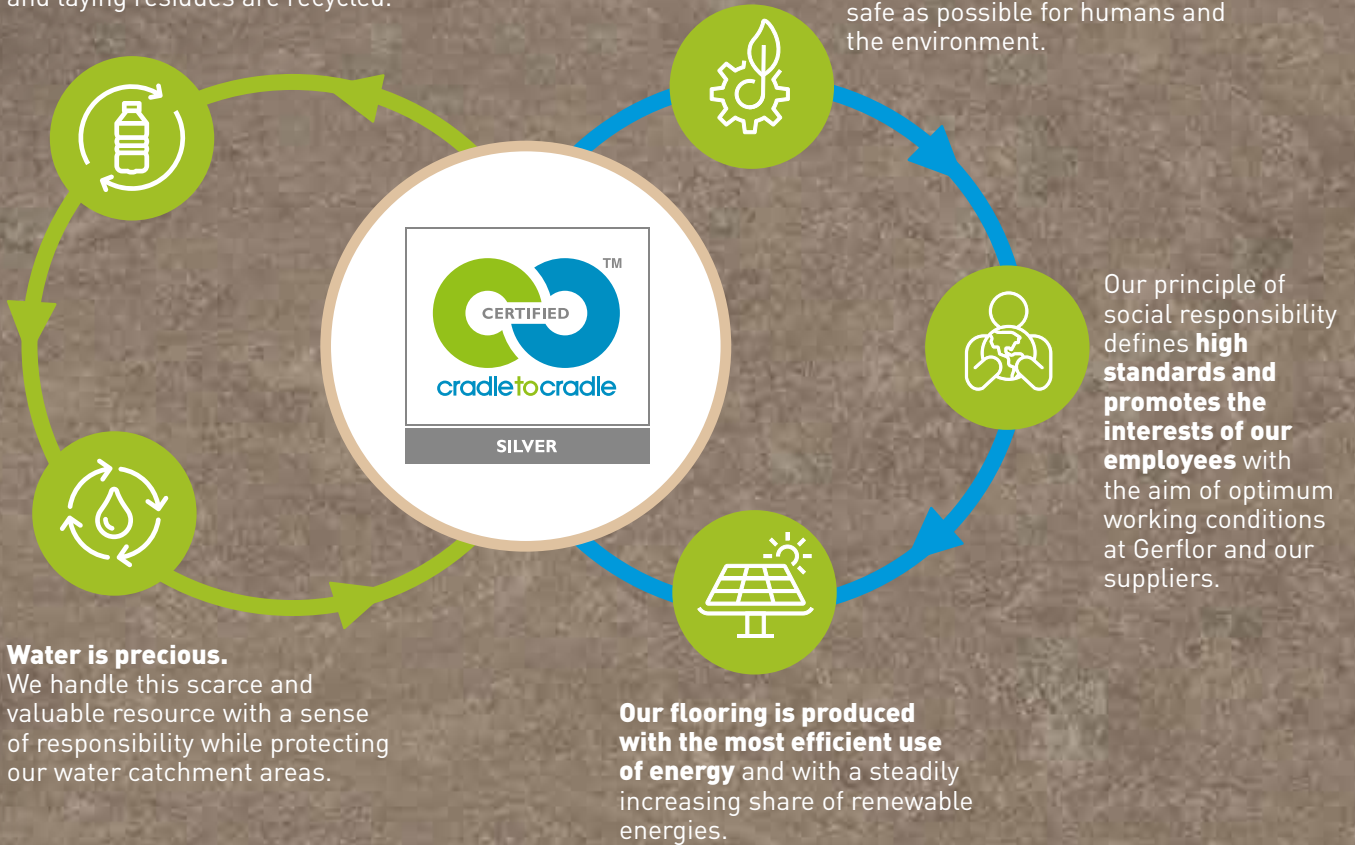




# CRADLE TO CRADLE CERTIFIED™ SILVER<sup>(1)</sup>

DLW Linoleum consists of **76%** rapidly renewable raw materials, and contains up to **40%** of recycled content. **100%** of production waste and laying residues are recycled.

The products are manufactured **using raw materials** that are as safe as possible for humans and the environment.



(1) MARMORETTE, ARABESQUE, COLORETTE, UNI WALTON, MARMORETTE ACOUSTIC, LINO ART

Being **Cradle to Cradle Certified™ Silver** means our product was awarded certification based upon their performance across five critical areas of sustainability: Material Health, Product Circularity, Renewable Energy and Carbon Management, Water Stewardship, and Social Fairness. The certification is awarded by the Cradle to Cradle Products Innovation Institute.

Cradle to Cradle Certified™ products are designed for a safe, circular and responsible future economy. Gerflor's final target is to reduce waste, up to get "zero waste" meaning the waste can become available for a new product cycle.

Cradle to Cradle Certified™ is a product certification based on a design philosophy Gerflor adheres to follow this approach in the search for continuous improvement.



**EXCLUSIVE**



## PROTECTIVE BY NATURE

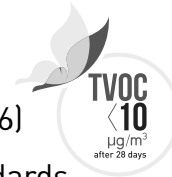
**NEW SOLVENT-FREE SURFACE PROTECTION  
DEVELOPED EXCLUSIVELY FOR LINOLEUM.**

EXTREMELY HARD WEARING DUE TO TRIPLE  
LASER UV CROSS-LINKING



### INDOOR AIR QUALITY

- Very low VOC emissions  
TVOC < 10microgram/m<sup>3</sup> after 28 days (ISO 16516)
- Certified according to the most demanding standards



### NATURAL DESIGN MATT EFFECT



LPX / PUR / others...

neocare



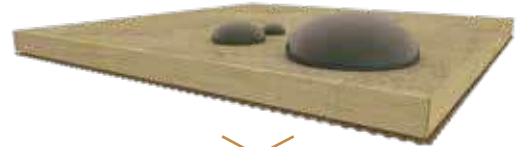
## EASY TO CLEAN

- Dirt and stain barrier
- Cost effective maintenance
- Easy cleaning with a mop or any modern cleaning equipment

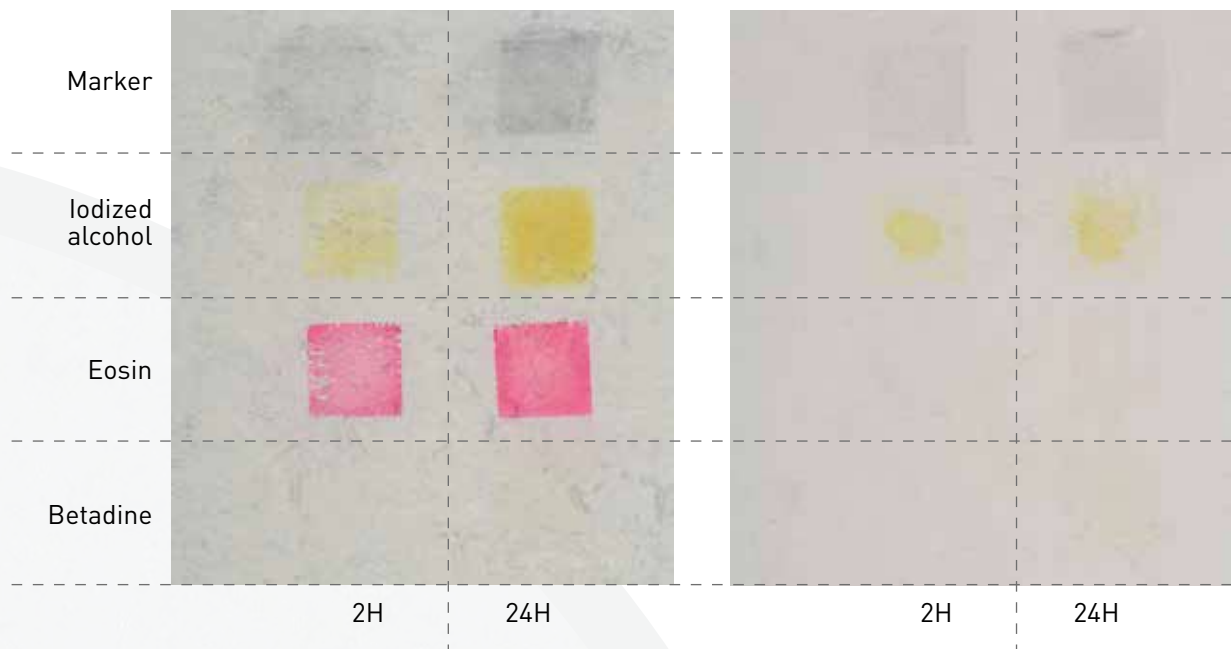
*Detailed cleaning protocol available on [www.gerfor.com](http://www.gerfor.com)*



Standard Linoleum



NEOCARE™



## HYGIENE

DLW Linoleum floorings contribute to lower the microbe load (bacteria, virus, ...) and to minimise the risk of a contamination chain.

- Excellent resistance against disinfection chemicals
- Antiviral and antibacterial activity

### ANTIBACTERIAL SURFACES

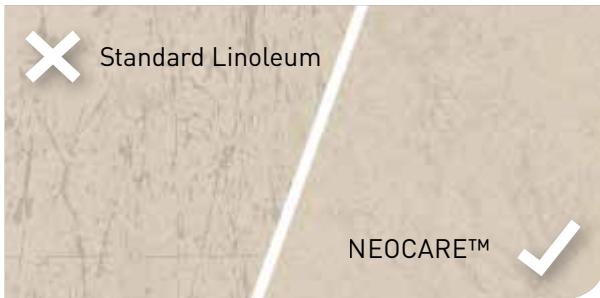
Tests conducted by a third part lab (Isega) according to ISO 22196 / JIS Z 2801 standard, prove that DLW Linoleum floorings with Neocare™ surface treatment have antibacterial activity against E.coli - S.aureus - MRSA: our surfaces **inhibit growth of bacteria by 99,99% after 24h**

### ANTIVIRAL SURFACES

Tests conducted by a third part lab (Virhealth) according to ISO 21702 standard, prove that DLW Linoleum floorings with Neocare™ have antiviral activity against Human Coronaviruses : our surfaces **reduce the number of virus by 98.65% after 5h.**



## DURABLE



- No sealing and waxing needed
- Higher scratch resistance
- Easy to repair: in case of heavily damaged flooring, DLW linoleum can be easily repaired using the spray buffing method (red disk)

## WAXING

NEOCARE™ is a high performing surface treatment protecting against dirt, stains and scratches and does not require any sealing & waxing throughout the life of the product. Waxing remains an option.



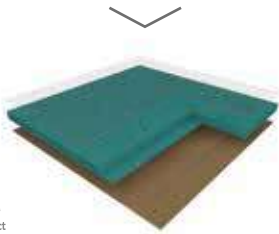
Uni Walton  
0081 Nickel Grey

# THE MOST COMPLETE OFFER

## FLOORS

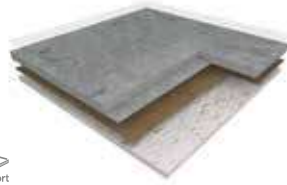
### COMPACT LINOLEUM

2MM / 2.5MM / 3.2MM



### ACOUSTIC LINOLEUM

4MM  
Acoustic 15dB / AcousticPlus 19dB



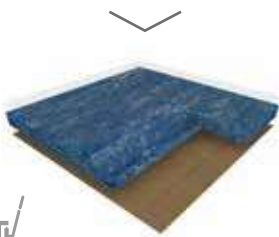
- ACOUSTIC VERSIONS
  - TILES
  - BFL-S1 VERSION

ON DEMAND

## TECHNIC LINOLEUM

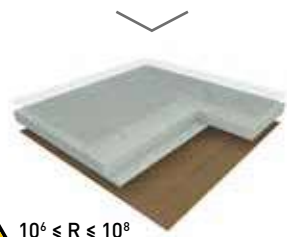
### HIGH MECHANICAL TRAFFIC

4MM



### DISSIPATIVE LINOLEUM FOR ESD AREA

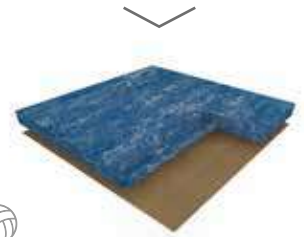
2.5MM



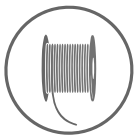
$10^6 \leq R \leq 10^8$

### SPORT LINOLEUM

3.2MM / 4MM  
More information in sport brochure

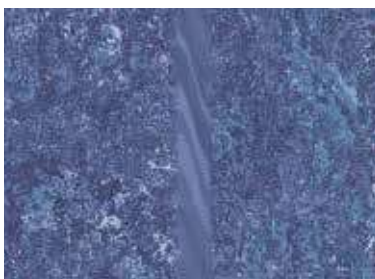


## FINISHES



Welding rods

### CAMOUFLAGE



**Marmorette, Arabesque & Linodur**

Camouflage welding rod: invisible joints.

### UNI



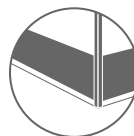
**Colorette, Uni Walton & Lino Art**

Uni welding rod: a large palett of colors.

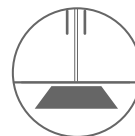
Welding rod matching table available on: [gerflor.com](http://gerflor.com)



Handrails



Wall Coverings & Protections



Entrance mats



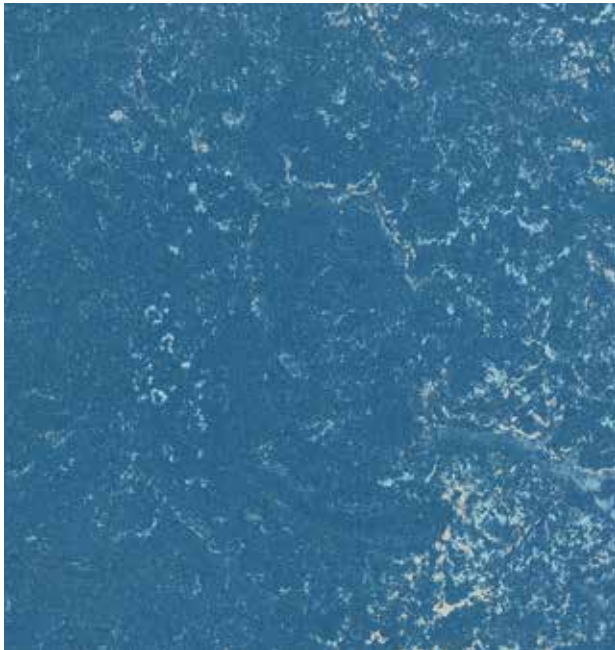
Skirtings & Profiles



Arabesque  
0305 Monarca

# COMPACT LINOLEUM

# ARABESQUE



**0304 Seravezza**  
NCS: 5030-R90B / LRV: 13.6



**0302 Antico**  
NCS: 2502-Y / LRV: 47.8



**0305 Monarca**  
NCS: 4005-G50Y / LRV: 33.5



**0301 Alcino**  
NCS: 8502-B / LRV: 5.7



**0303 Verona**  
NCS: 2060-Y90R / LRV: 20.3



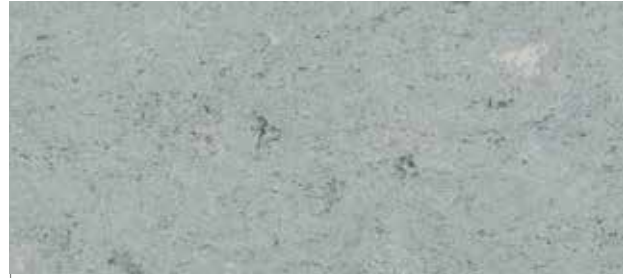
**0306 Prato**  
NCS: 5020-B30G / LRV: 16.0



**0155 Smoked Pearl**  
2.5mm  
NCS: 2010-Y90R / LRV: 44.6



**0056 Foggy Blue**  
2.0mm / 2.5mm / 3.2mm  
NCS: 4005-Y50R / LRV: 31.8



**0055 Ash Grey**  
2.0mm / 2.5mm / 3.2mm  
NCS: 3502-B / LRV: 39.0



**0153 Greystone Grey**  
2.5mm  
NCS: 4005-Y50R / LRV: 29.5



**0053 Ice Grey**   
2.0mm / 2.5mm / 3.2mm  
NCS: 4000-N / LRV: 31.2



**0050 Quartz Grey**  
2.0mm / 2.5mm / 3.2mm  
NCS: 5502-R / LRV: 20.7



**0252**  
Light Grey



**0054 Concrete Patty**  
2.5mm  
NCS: 5500-N / LRV: 20.5



**0059 Plumb Grey**   
2.0mm / 2.5mm / 3.2mm  
NCS: 7005-R50B / LRV: 11.3



**0096 Midnight Grey**   
2.5mm  
NCS: 8000-N / LRV: 7.3

Acoustic 15dB in stock AcousticPlus 19dB in stock

All other colours can be manufactured in Acoustic 15dB version. Special request - Minimum order quantity: 1200sqm. Below 1200sqm, use Korkment underlayer.  
All other colours can be manufactured in AcousticPlus 19dB version. Special request - Minimum order quantity: 60sqm



**0252 Light Grey**  
2.5mm  
NCS: 2005-Y20R / LRV: 49.8



**0045 Sand Beige** A  
2.0mm / 2.5mm  
NCS: 2005-Y50R / LRV: 53.2



**0254 Mineral Grey**  
2.5mm  
NCS: 4005-Y20R / LRV: 34.3



**0106 Hazelnut Shake**  
2.5mm  
NCS: 4010-Y70R / LRV: 26.6



**0146 Beeswax Beige**  
2.5mm  
NCS: 3010-Y30R / LRV: 41.0



**0166 Clay**  
2.5mm  
NCS: 4005-Y20R / LRV: 28.4



**0003 Dark Brown**  
2.5mm  
NCS: 5010-Y50R / LRV: 23.0



**0070**  
Rocky Brown



**0164 Milk Coffee**  
2.5mm  
NCS: 5010-Y50R / LRV: 18.9



**0158 Tabac Grey**  
2.5mm  
NCS: 6502-R / LRV: 14.8



**0089 Pecan Pie**  
2.5mm  
NCS: 6010-Y70R / LRV: 15.2



**0160 Industrial Grey**  
2.0mm / 2.5mm  
NCS: 7502-R / LRV: 10.3



**0108 Mokka Brown**  
2.5mm  
NCS: 8005-Y80R / LRV: 6.8

A Acoustic 15dB in stock

A+ AcousticPlus 19dB in stock



**0091 Shiitake Mushroom**  
2.5mm  
NCS: 2010-Y80R / LRV: 41.6



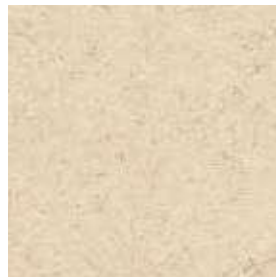
**0090 Soapstone**  
2.5mm  
NCS: 4010-Y70R / LRV: 28.2



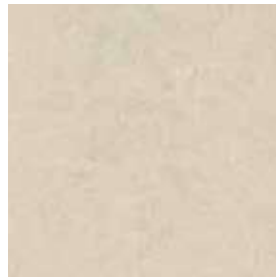
**0092 Beach**  
2.5mm  
NCS: 3010-Y30R / LRV: 38.6



**0042 Shortcrust**  
2.5mm  
NCS: 3020-Y30R / LRV: 31.3



**0145 Banana White**  
2.5mm  
NCS: 1510-Y40R / LRV: 60.4



**0251 Cream**  
2.5mm  
NCS: 2010-Y10R / LRV: 52.9



**0253 Pebble Grey**  
2.5mm  
NCS: 3005-Y20R / LRV: 44.7




**0243 Marble Beige**  
2.5mm  
NCS: 2020-Y30R / LRV: 48.8




**0070 Rocky Brown**  
2.0mm / 2.5mm / 3.2mm  
NCS: 2020-Y40R / LRV: 40.2



**0098 Desert Beige**   
2.0mm / 2.5mm  
NCS: 2020-Y40R / LRV: 49.9



**0040 Light Sahara**   
2.0mm / 2.5mm  
NCS: 1515-Y30R / LRV: 52.7



**0076 Pale Yellow**  
2.5mm  
NCS: 2030-Y10R / LRV: 49.6



**0173 Melon Orange**  
2.5mm  
NCS: 2040-Y30R / LRV: 38.6



**0073 Spicy Orange** **A+**  
2.5mm  
NCS: 3040-Y50R / LRV: 24.7



**0019 Sunset Orange** **A**  
2.5mm  
NCS: 3040-Y60R / LRV: 27.3



**0072 Golden Yellow**  
2.5mm  
NCS: 2040-Y20R / LRV: 41.0



**0172 Papaya Orange**  
2.5mm  
NCS: 2060-Y30R / LRV: 33.1



**0119 Terracotta**  
2.5mm  
NCS: 3050-Y70R / LRV: 18.1

**A** Acoustic 15dB in stock    **A+** AcousticPlus 19dB in stock

24 All other colours can be manufactured in Acoustic 15dB version. Special request - Minimum order quantity: 1200sqm. Below 1200sqm, use Korkment underlayer.  
All other colours can be manufactured in AcousticPlus 19dB version. Special request - Minimum order quantity: 60sqm



0018  
Lobster Red



0211 Pink  
2.5mm  
NCS: 1030-R / LRV: 42.1



0075 Light Aurora  
2.5mm  
NCS: 2030-Y60R / LRV: 40.2



0117 Mandarin Orange  
2.5mm  
NCS: 2070-Y70R / LRV: 18.8



0118 Chili Red  
2.5mm  
NCS: 2070-Y90R / LRV: 12.5



0018 Lobster Red  
2.5mm  
NCS: 4040-R / LRV: 10.6



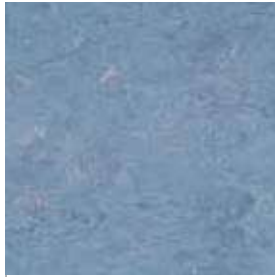
**0121 Blue Eyes**  
2.5mm  
NCS: 3010-R80B / LRV: 39.0



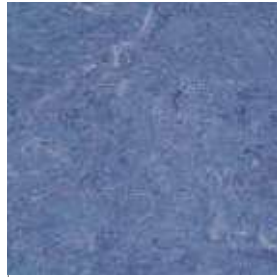
**0122 Fluffy Blue**  
2.5mm  
NCS: 4030-B / LRV: 21.6



**0026 Sky Blue**  
2.5mm  
NCS: 4030-R90B / LRV: 19.7



**0023 Dusty Blue** A  
2.0mm / 2.5mm / 3.2mm  
NCS: 4010-R90B / LRV: 30.0



**0049 Royal Blue**  
2.5mm / 3.2mm  
NCS: 5020-R70B / LRV: 17.8



**0022 Autumn Blue** A+  
2.5mm / 3.2mm  
NCS: 5010-R90B / LRV: 20.6



**0224 Mystery Blue**  
2.5mm  
NCS: 6020-R90B / LRV: 13.0



**0149 Dark Blue**  
2.5mm  
NCS: 8010-R70B / LRV: 7.2



**0148 Ink Blue**  
2.5mm  
NCS: 6020-R70B / LRV: 10.8



**0128 Violet**  
2.5mm  
NCS: 4030-R60B / LRV: 13.8



**0028 Dive**  
2.5mm  
NCS: 6020-R80B / LRV: 9.4



**0136 Turquoise Bay**  
2.5mm  
NCS: 6030-B10G / LRV: 9.0



**0129 Curacao Petrol** A+  
2.5mm  
NCS: 4040-B60G / LRV: 16.8





**0130 Antique Green**  
2.5mm  
NCS: 2020-G50Y / LRV: 45.5



**0099 Grey Turquoise**  
2.5mm  
NCS: 4010-B70G / LRV: 27.0



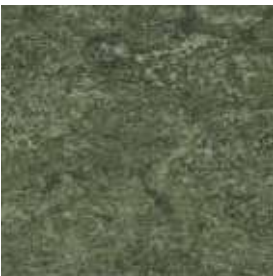
**0043 Leaf Green**  
2.5mm  
NCS: 4010-G30Y / LRV: 31.6



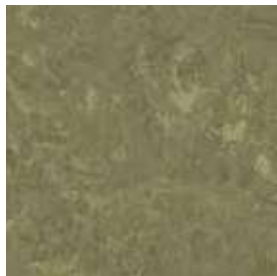
**0100 Frog Green**  
2.5mm  
NCS: 3030-G40Y / LRV: 31.4



**0132 Lime Green**  
2.5mm  
NCS: 2050-G60Y / LRV: 38.1



**0083 Jungle**  
2.5mm  
NCS: 6010-G50Y / LRV: 14.9



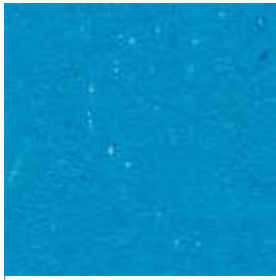
**0138 Khaki**  
2.5mm  
NCS: 5020-G90Y / LRV: 19.9



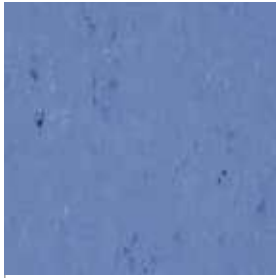
**0100**  
Frog Green

Acoustic 15dB in stock AcousticPlus 19dB in stock

All other colours can be manufactured in Acoustic 15dB version. Special request - Minimum order quantity: 1200sqm. Below 1200sqm, use Korkment underlayer.  
All other colours can be manufactured in AcousticPlus 19dB version. Special request - Minimum order quantity: 60sqm



**0123 Poppy Blue**   
 NCS: 1560-R90B / LRV: 21.9



**0004 Bluebird**   
 NCS: 4040-R80B / LRV: 18.6



**0132 Spicy Green**   
 NCS: 1060-G40Y / LRV: 44.1



**0006 Vivid Green**   
 NCS: 3040-G20Y / LRV: 24.9



**0001 Banana Yellow**



**0058 Aluminium Grey**   
 NCS: 3502-R / LRV: 36.6



**0052 Oxyd Grey**   
 NCS: 2502-Y / LRV: 47.0



**0080 Elephant Grey**   
 NCS: 6502-B / LRV: 13.5



**0081 Private Black**   
 NCS: 8502-B / LRV: 7.3



**0059 Stone Grey**   
 NCS: 5500-N / LRV: 22.2

Acoustic 15dB in stock AcousticPlus 19dB in stock



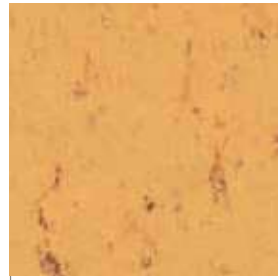
**0001 Banana Yellow**  
NCS: 2050-Y / LRV: 45.7 A+



**0071 Straw Beige**  
NCS: 2020-Y30R / LRV: 46.3



**0171 Sunrise Orange**  
NCS: 1060-Y40R / LRV: 40.7



**0073 Sand Yellow**  
NCS: 2040-Y30R / LRV: 44.8



**0170 Kumquat Orange** A+  
NCS: 1070-Y70R / LRV: 26.9



**0016 Deep Orange**  
NCS: 2050-Y60R / LRV: 27.7



**0118 Power Red**  
NCS: 1070-Y90R / LRV: 18.9



**0110 Cadillac Pink** A+  
NCS: 2050-R30B / LRV: 23.9

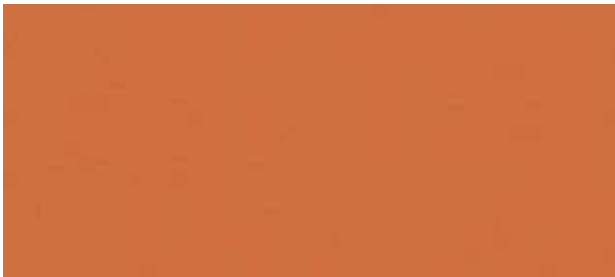


**0012 Light Beige** A+  
NCS: 3010-Y30R / LRV: 40.2



**0043 Light Mud**  
NCS: 5010-Y30R / LRV: 25.6





**0062 Mediterranean Orange**  
NCS: 3060-Y70R / LRV: 16.4



**0088 Chestnut**  
NCS: 5040-Y80R / LRV: 9.1



**0043 Neutral Beige**  
NCS: 1515-Y30R / LRV: 51.1



**0010 Pompeji Red**  
NCS: 2070-Y90R / LRV: 14.1



**0060 Deep Brown**  
NCS: 7020-Y60R / LRV: 9.2



0100  
Ocean Blue



0059 Frost Grey  
NCS: 1502-Y50R / LRV: 59.6



0095 Spring Blue  
NCS: 3030-B / LRV: 29.1



0081 Nickel Grey  
NCS: 4502-R / LRV: 31.5



0100 Ocean Blue  
NCS: 5040-R80B / LRV: 8.8



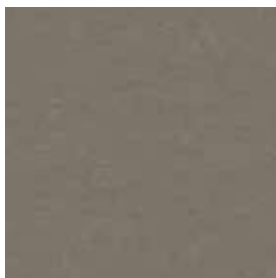
0085 Warm Concrete Grey  
NCS: 4005-Y20R / LRV: 35.7



0090 Olive  
NCS: 5020-Y / LRV: 22.3



0082 Broken Grey  
NCS: 5502-R / LRV: 20.7



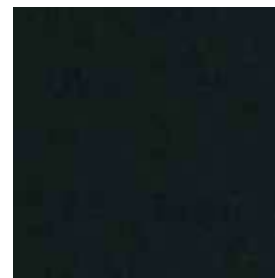
0058 Clay Grey  
NCS: 6005-Y20R / LRV: 15.8



0035 Racing Green  
NCS: 8005-B80G / LRV: 7.6



0083 Architects Grey  
NCS: 7500-N / LRV: 10.9



0080 Black  
NCS: 8505-R80B / LRV: 4.8

All colours can be manufactured in Acoustic 15dB version. Special request - Minimum order quantity: 1200 qm. Below 1200sqm, use Korkment underlayer.  
All colours can be manufactured in AcousticPlus 19dB version. Special request - Minimum order quantity: 60sqm

# LINO ART URBAN



2.5mm



**0552 Silver Grey**  
NCS: 3005-G50Y / LRV: 41.8



**0567 Shining Green**  
NCS: 4005-G80Y / LRV: 35.2



**0566 Shining Blue**  
NCS: 5005-R80B / LRV: 21.8



**0565 Graphite Grey**  
NCS: 6005-R50B / LRV: 15.3



**0562 Titan Grey**  
NCS: 3000-N / LRV: 41.2



**0563 Zinc Grey**  
NCS: 4502-R / LRV: 27.4





**0555 Flashy Street Grey**  
NCS: 4005-Y20R / LRV: 32.1



**0550 Beton Soft Grey**  
NCS: 4005-Y50R / LRV: 31.7



**0556 Mud Grey**  
NCS: 4010-Y30R / LRV: 33.7



**0557 Urban Grey**  
NCS: 4010-Y50R / LRV: 30.5



**0558 Screed Grey**  
NCS: LRV: 5010-Y10R / 22.8



**0564 Natural Stone**  
NCS: 1505-Y20R / LRV: 59.1



**0554 Concrete Grey**  
NCS: 5005-Y50R / LRV: 25.2



**0551 Flashy Asphalt Grey**  
NCS: 5005-Y80R / LRV: 24.9



**0559 Vintage Grey**  
NCS: 5005-Y20R / LRV: 24.9



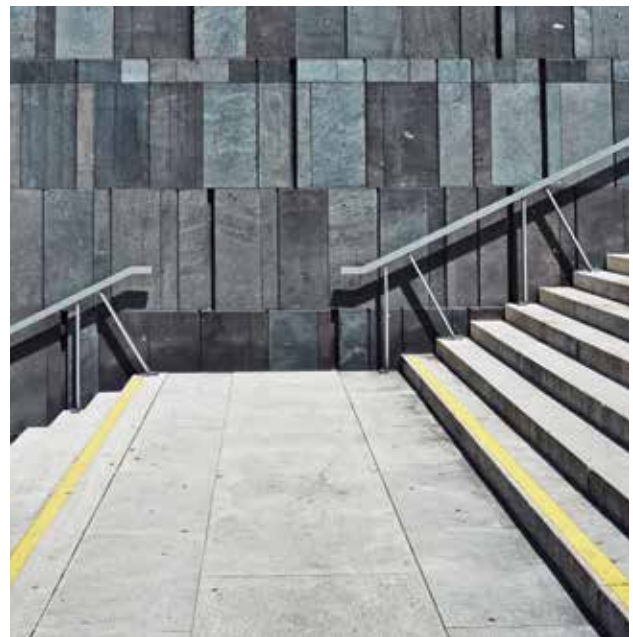
**0560 Bold Grey**  
NCS: 6005-Y50R / LRV: 16.5



**0553 Dark Concrete Grey**  
NCS: 6005-Y50R / LRV: 16.1



**0561 Pitch Black**  
NCS: 8000-N / LRV: 7.1



All colours can be manufactured in Acoustic 15dB version. Special request - Minimum order quantity: 1200 qm. Below 1200sqm, use Korkment underlayer.  
All colours can be manufactured in AcousticPlus 19dB version. Special request - Minimum order quantity: 60sqm

# LINO ART FLOW



**0024 Magma**  
NCS: 3010-Y60R / LRV: 47.8



**0012 Waterfall**  
NCS: 2002-Y50R / LRV: 50.3



**0005 Bamboo**  
NCS: 2005-Y20R / LRV: 50.6



**0030 Rain**  
NCS: 2002-Y50R / LRV: 43.3



**0048 Travertin**  
NCS: 2010-Y30R / LRV: 55.0



**0036 Shaal Concrete**  
NCS: 2002-Y50R / LRV: 52.6



**0050 Grey Line**  
NCS: 5000-N / LRV: 26.0



**0083 Light Grey**  
NCS: 7500-N / LRV: 10.4



**0043 Pulp Greige**  
NCS: 5005-Y20R / LRV: 25.4



**0162 Bark**  
NCS: 6010-Y50R / LRV: 16.0

All colours can be manufactured in Acoustic 15dB version. Special request - Minimum order quantity: 1200 qm. Below 1200sqm, use Korkment underlayer.  
All colours can be manufactured in AcousticPlus 19dB version. Special request - Minimum order quantity: 60sqm



Lino Art Flow  
0083 Light Grey

# LINO ART METALLIC



**0078 Petrol Blue**  
NCS: 7010-R70B / LRV: 11.2



**0076 Salsa**  
NCS: 4050-Y90R / LRV: 10.0



**0070 Cool Grey**  
NCS: 7005-B20G / LRV: 11.1



**0072 Olive Green**  
NCS: 7005-Y50R / LRV: 13.5



**0068 Bottle Green**  
NCS: 8005-B80G / LRV: 7.2



**0083 Alumino Light Grey**  
NCS: 7500-N / LRV: 11.0



**0080 Firmament Black**  
NCS: 8500-N / LRV: 5.0



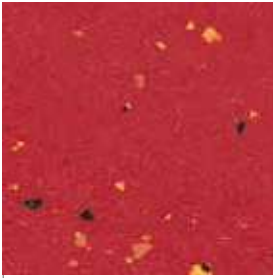
**0074 Burned Siena**  
NCS: 8005-Y80R / LRV: 6.7



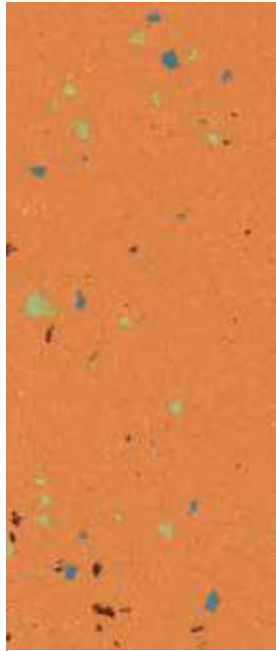
# LINO ART STAR



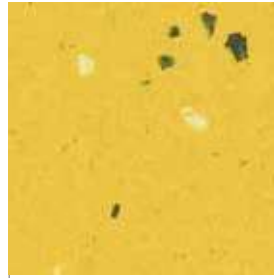
2.5mm



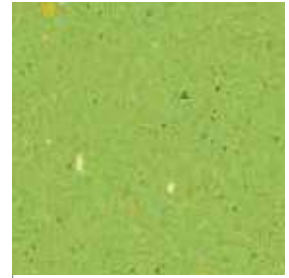
**0015 Glaring Red**  
NCS: 2070-R / LRV: 11.5



**0075 Apricot**  
NCS: 2050-Y50R / LRV: 29.0



**0001 Lemon Yellow**  
NCS: 1050-Y10R / LRV: 47.9



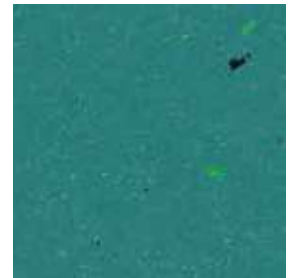
**0030 Apple Green**  
NCS: 2050-G40Y / LRV: 35.0



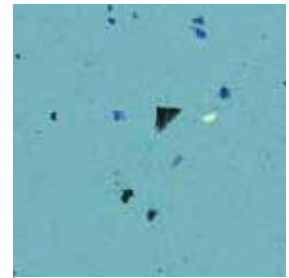
**0092 Stratiatella**  
NCS: 4005-Y20R / LRV: 35.4



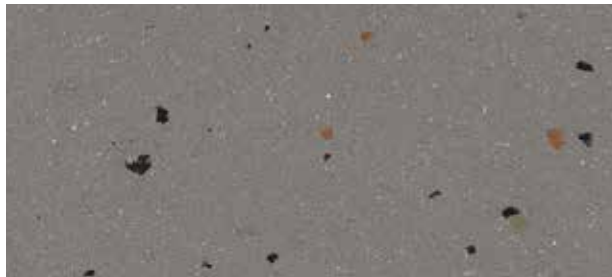
**0059 Dusty Grey**  
NCS: 5005-Y50R / LRV: 20.9



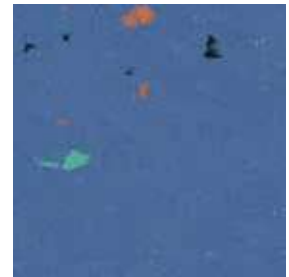
**0023 Blue Turquoise**  
NCS: 5030-B50G / LRV: 16.0



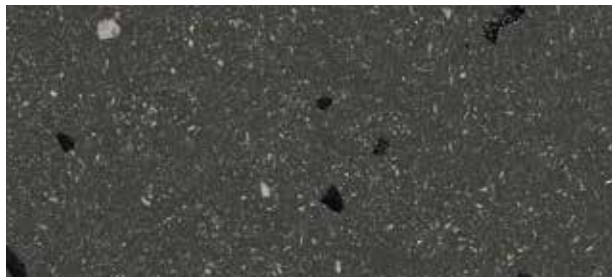
**0020 Aqua Turquoise**  
NCS: 2040-B / LRV: 33.9



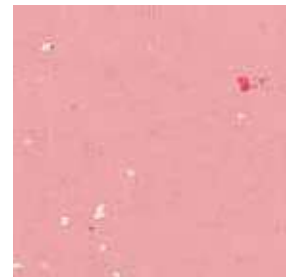
**0090 Smooth Grey**  
NCS: 6005-Y80R / LRV: 17.5



**0025 Clear Blue**  
NCS: 5030-R70B / LRV: 13.4

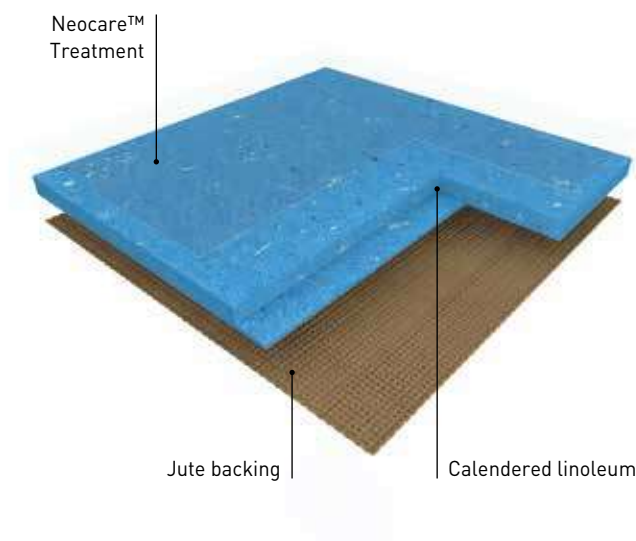


**0085 Mid Grey**  
NCS: 8000-N / LRV: 8.2



**0094 Bubble Gum**  
NCS: 1040-R / LRV: 42.5

# COMPACT LINOLEUM neo care™



**ARABESQUE** is a calendered linoleum compact floorcovering in sheet, 2m wide, providing excellent resistance to everyday wear and tear in high traffic areas. Its weight is 2900g/sqm in 2.5mm. It features a marbled design and presents a matt finish, is composed of 98% bio based materials (linseed oil, wood flour, resins, cork, minerals and jute fabric) among of which 76% are rapidly renewable.



**LINO ART** is a calendered linoleum compact floorcovering in sheet, 2m wide, providing excellent resistance to everyday wear and tear in high traffic areas. Its weight is 2900g/sqm in 2.5mm. It features a striated design (FLOW), a scattered metallic design (METALLIC), a scattered colour chips design (STAR), a concrete design (URBAN) and presents a matt finish, is composed of 98% bio based materials (linseed oil, wood flour, resins, cork, minerals and jute fabric) among of which 76% are rapidly renewable.



**COLORETTE** is a calendered linoleum compact floorcovering in sheet, 2m wide, providing excellent resistance to everyday wear and tear in high traffic areas. Its weight is 2900g/sqm in 2.5mm. It features a speckled design and presents a matt finish, is composed of 98% bio based materials (linseed oil, wood flour, resins, cork, minerals and jute fabric) among of which 76% are rapidly renewable.

## ARABESQUE, COLORETTE, MARMORETTE, UNI WALTON, LINO ART

The floorings are produced with Neocare™ solvent-free surface treatment, an exclusive photo-cured acrylate based lacquer surface treatment obtained by triple laser UV cross linking. Neocare™ offers excellent scratch resistance as well as resistance to chemicals found in aggressive environments such as bleach, hydro alcoholic solutions, Betadine and Eosin as well as markers making maintenance easier and increasing the life of the flooring. This treatment avoids performing any polishing throughout the lifetime of the product. It can however be polished following usual recommendations and according to the customer's wishes.



**MARMORETTE** is a calendered linoleum compact floorcovering in sheet, 2m wide, providing excellent resistance to everyday wear and tear in high traffic areas. Its weight is 2400g/sqm in 2.0mm, 2900g/sqm in 2.5mm and 3800g/sqm in 3.2mm. It features a marbled design and presents a matt finish, is composed of 98% bio based materials (linseed oil, wood flour, resins, cork, minerals and jute fabric) among of which 76% are rapidly renewable.

The products ensure perfect indoor air quality (TVOC at 28 days [EN 16516] < 10 microgram/m<sup>3</sup>) and are classified A+ (the best class) in the context of health labeling. It is Floorscore®, M1 and Blue Angel certified.

The floorings are 100% recyclable, are composed of minimum 25% recycled content and up to 40% recycled content, 100% controlled, are REACH compliant and rated CfI-s1 for fire resistance.

Designed and manufactured in a sustainable way in a plant awarded with ISO 9001 (quality), ISO 14001 (environment) and ISO 50001 (energy) certifications, the floorings are Cradle to Cradle certified™ Silver. They are Environmental Performance Declaration (EPD) certified by an external laboratory indicating carbon neutrality during the first stages of their life cycle ("from cradle to gate").

The Camouflage (Arabesque, Marmorette) or Uni (Colorette, Uni Walton, Lino Art) welding rod makes the connections between the strips invisible.

They are antistatic, antibacterial according to ISO 22196 / JIS Z 2801 and antiviral according to ISO 21702.



**UNI WALTON** is a calendered linoleum compact floorcovering in sheet, 2m wide, providing excellent resistance to everyday wear and tear in high traffic areas. Its weight is 2900g/sqm in 2.5mm. It features a uni design and presents a matt finish, is composed of 98% bio based materials (linseed oil, wood flour, resins, cork, minerals and jute fabric) among of which 76% are rapidly renewable.








Colorette  
0123 Poppy Blue

---


# COMPACT LINOLEUM

## TECHNICAL DATA

			MARMORETTE	ARABESQUE / COLORETTE / UNI WALTON	LINO ART URBAN / FLOW / METALLIC / STAR
<b>DESCRIPTION</b>					
Total thickness	EN ISO 24346	mm	2.0 / 2.5 / 3.2	2.5	2.5
Backing	-	-	Jute fabric	Jute fabric	Jute fabric
Thickness of cork/foam backing	EN ISO 24340	-	-	-	-
Weight	EN ISO 23997	g/sqm	2400 / 2900 / 3800	2900	2900
Width of sheet	EN ISO 24341	cm	200	200	200
Length of sheet	EN ISO 24341	m	20-31	20-31	20-31
<b>CLASSIFICATION</b>					
Norm/Product specification	-	-	EN ISO 24011	EN ISO 24011	EN ISO 24011
European classification	EN ISO 10874	class	23 / 34 / 43 23 / 32 / 41 in 2.0mm	23 / 34 / 43	23 / 34 / 43
Fire rating	EN 13501-1	class	C <sub>fl</sub> -s1*	C <sub>fl</sub> -s1*	C <sub>fl</sub> -s1*
Slip resistance	ASR A1.5 / DIN 51130 - BGR 181	class	R9	R9	R9
Barefoot slipping	DIN 51097	-	-	-	-
Impact sound insulation	EN ISO 717-2	dB	3dB / 5dB / 6dB	5dB	5dB
<b>PERFORMANCES</b>					
Residual indentation	EN ISO 24343-1	mm	≤ 0.09 / ≤ 0.11	≤ 0.11	≤ 0.11
Colour fastness	EN ISO 105 - B02	Rating	6	6	6
Vertical resistance	EN 1081	Ohm	-	-	-
Point contact resistance	VDE 0100	kOhm	> 200	> 200	> 200
Static electrical propensity	EN 1815	kV	≈ 2.0	≈ 2.0	≈ 2.0
Castor chair test (Type W)	ISO 4918	-	OK	OK	OK
Flexibility	ISO 24344	mm	Ø 20 (2.5mm)	Ø 20	Ø 20
Thermal resistance	EN 12667	sqm,K/W	0.012 / 0.015 / 0.018	0.015	0.015
Thermal conductivity	EN ISO 10456	W/(m.K)	0.17	0.17	0.17
Surface treatment	-	-	Neocare™	Neocare™	Neocare™
Chemical products resistance	EN ISO 26987	-	OK	OK	OK
Anti-bacterial activity (E. coli - S. aureus - MRSA) after 24 h**	EN ISO 22196 / JIS Z 2801	-	> 99.99% inhibits growth	> 99.99% inhibits growth	> 99.99% inhibits growth
Anti-viral activity (Human coronavirus) after 5 h**	ISO 21702	-	> 98.65% virucidal activity	> 98.65% virucidal activity	> 98.65% virucidal activity
<b>INDOOR AIR QUALITY</b>					
TVOC after 28 days	EN 16516	microgram/m <sup>3</sup>	< 10	< 10	< 10
<b>CIRCULAR ECONOMY</b>					
Certification	Cradle to Cradle	-	Silver	Silver	Silver
<b>CE MARKING</b>					
	EN 14041: 2004 AC: 2006	-			 

\* Glued according to certificate. / DOP numbers available from your local branch.

\*\* The implementation of an effective cleaning method is the best defence against infection.

 Depending on light exposure, the product colour can vary due to the natural oxidation process of linoleum. This process is reversible. We recommend that the samples be exposed to sunlight for several hours prior to making a final color choice.



Colorette  
0012 Light Beige

Colorette  
0001 Banana Yellow

# ACOUSTIC LINOLEUM

# MARMORETTE ACOUSTIC



**0019 Sunset Orange**  
NCS: 3040-Y60R / LRV: 27.3



**0098 Desert Beige**  
NCS: 2020-Y40R / LRV: 49.9



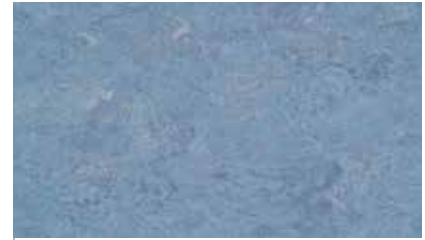
**0045 Sand Beige**  
NCS: 2005-Y50R / LRV: 53.2



**0059 Plumb Grey**  
NCS: 7005-R50B / LRV: 11.3



**0053 Ice Grey**  
NCS: 4000-N / LRV: 31.2



**0023 Dusty Blue**  
NCS: 4010-R90B / LRV: 30.0

# MARMORETTE ACOUSTICPLUS



**0129 Curacao Petrol**  
NCS: 4040-B60G / LRV: 16.8



**0130 Antique Green**  
NCS: 2020-G50Y / LRV: 45.5



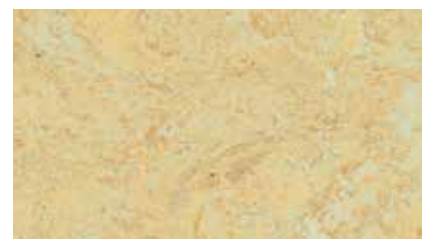
**0022 Autumn Blue**  
NCS: 5010-R90B / LRV: 20.6



**0073 Spicy Orange**  
NCS: 3040-Y50R / LRV: 24.7



**0070 Rocky Brown**  
NCS: 2020-Y40R / LRV: 40.2



**0040 Light Sahara**  
NCS: 1515-Y30R / LRV: 52.7



**0096 Midnight Grey**  
NCS: 8000-N / LRV: 7.3



**0059 Plumb Grey**  
NCS: 7005-R50B / LRV: 11.3



**0053 Ice Grey**  
NCS: 4000-N / LRV: 31.2

All other colors can be manufactured in Acoustic 15dB version. Special request - Minimum order quantity: 1200sqm. Below 1200sqm, use Korkment underlayer.  
All other colors can be manufactured in AcousticPlus 19dB version. Special request - Minimum order quantity: 60sqm

# COLORETTE ACOUSTICPLUS



**0001 Banana Yellow**  
NCS: 2050-Y / LRV: 45.7



**0170 Kumquat Orange**  
NCS: 1070-Y70R / LRV: 26.9



**0110 Cadillac Pink**  
NCS: 2050-R30B / LRV: 23.9



**0132 Spicy Green**  
NCS: 1060-G40Y / LRV: 44.1



**0123 Poppy Blue**  
NCS: 1560-R90B / LRV: 21.9



**0004 Bluebird**  
NCS: 4040-R80B / LRV: 18.6



**0012 Light Beige**  
NCS: 3010-Y30R / LRV: 40.2



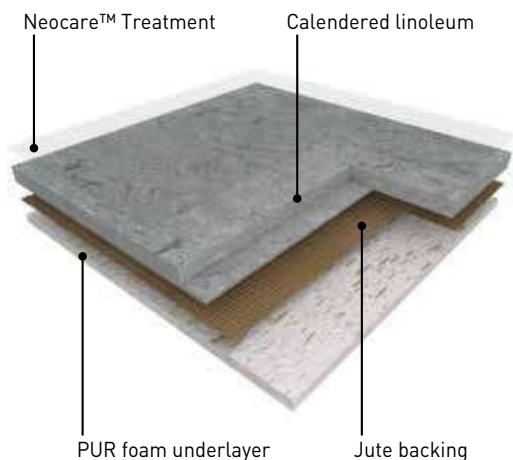
**0059 Stone Grey**  
NCS: 5500-N / LRV: 22.2



**0080 Elephant Grey**  
NCS: 6502-B / LRV: 13.5

0001  
Banana Yellow

# ACOUSTIC LINOLEUM neocare™



**MARMORETTE ACOUSTICPLUS** is a calendered linoleum acoustic floorcovering in sheet, 2m wide, providing excellent resistance to everyday wear and tear in high traffic areas.

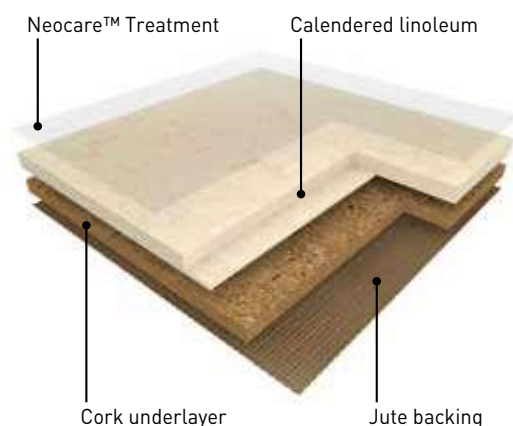
Its weight is 3500g/sqm in 4.0mm.

It features a marbled design and presents a matt finish, is composed of bio based materials (linseed oil, wood flour, resins, cork, minerals and jute fabric), rapidly renewable and features a 1.5mm recycled foam underlayer, ensuring up to 19dB impact sound reduction.

**COLORETTE ACOUSTICPLUS** is a calendered linoleum acoustic floorcovering in sheet, 2m wide, providing excellent resistance to everyday wear and tear in high traffic areas.

Its weight is 3500g/sqm in 4.0mm.

It features a speckled design and presents a matt finish, is composed of bio based materials (linseed oil, wood flour, resins, cork, minerals and jute fabric), rapidly renewable and features a 1,5mm recycled foam underlayer, ensuring up to 19dB impact sound reduction.



**MARMORETTE ACOUSTIC** is a calendered linoleum acoustic floorcovering in sheet, 2m wide, providing excellent resistance to everyday wear and tear in high traffic areas.

Its weight is 3900g/sqm in 4.0mm. It features a marbled design and presents a matt finish, is composed of bio based materials (linseed oil, wood flour, resins, cork, minerals and jute fabric), rapidly renewable and features a 2mm cork underlayer, ensuring up to 15dB impact sound reduction.

## ACOUSTIC LINOLEUM

The floorings are produced with Neocare™ solvent-free surface treatment, an exclusive photo-cured acrylate based lacquer surface treatment obtained by triple laser UV cross linking. Neocare™ offers excellent scratch resistance as well as resistance to chemicals found in aggressive environments such as bleach, hydro alcoholic solutions, Betadine and Eosin as well as markers making maintenance easier and increasing the life of the flooring. This treatment avoids performing any polishing throughout the lifetime of the product. It can however be polished following usual recommendations and according to the customer's wishes.

The products ensure perfect indoor air quality (TVOC at 28 days (EN 16516) < 10 microgram/m<sup>3</sup>) and are classified A + (the best class) in the context of health labeling. They are Floorscore®, M1 and Blue Angel certified. The floorings are 100% recyclable, are composed of minimum 25% recycled content and up to 40% recycled content, 100% controlled, are REACH compliant and rated Cfl-s1 for fire resistance.

Designed and manufactured in a sustainable way in a plant awarded with ISO 9001 (quality), ISO 14001 (environment) and ISO 50001 (energy) certifications, the floorings are Cradle to Cradle certified™ Bronze (Marmorette AcousticPlus, Colorette AcousticPlus) and Cradle to Cradle certified™ Silver (Marmorette Acoustic). Their Environmental Performance Declaration (EPD) certified by an external laboratory, indicate carbon neutrality during the first stages of their life cycle ("from cradle to gate").

The Camouflage (Arabesque, Marmorette) or Uni (Colorette, Uni Walton, Lino Art) welding rod makes the connections between the strips invisible.

They are antistatic, antibacterial according to ISO 22196 / JIS Z 2801 and antiviral according to ISO 21702.



### KORKMENT: CORK ACOUSTIC UNDERLAYER

2.0mm underlayer (weight 1.2kg/sqm),  
15dB impact sound reduction

Ref R1020102

	MARMORETTE ACOUSTICPLUS 19dB	COLORETTE ACOUSTICPLUS 19dB	MARMORETTE ACOUSTIC 15dB
--	---------------------------------	--------------------------------	-----------------------------

DESCRIPTION					
Total thickness	EN ISO 24346	mm	4.0	4.0	4.0
Backing	-	-	Foam backing	Foam backing	Cork and jute fabric
Thickness of cork / foam backing	EN ISO 24340	mm	1.5	1.5	2.0
Weight	EN ISO 23997	g/sqm	3500	3500	3900
Width of sheet	EN ISO 24341	cm	200	200	200
Length of sheet	EN ISO 24341	m	20-31	20-31	20-31

CLASSIFICATION					
Norm / Product specification	-	-	EN 686	EN 686	EN 687
European classification	EN ISO 10874	class	23 / 33 / 41	23 / 33 / 41	23 / 33 / 41
Fire rating	EN 13501-1	class	C <sub>fl</sub> -s1 <sup>(1)</sup>	C <sub>fl</sub> -s1 <sup>(1)</sup>	C <sub>fl</sub> -s1 <sup>(1)</sup>
Slip resistance	ASR A1.5 /DIN 51130 - BGR 181	class	R9	R9	R9
Impact sound insulation	EN ISO 717-2	dB	19dB	19dB	15dB

PERFORMANCES					
Residual indentation	EN ISO 24343-1	mm	≤ 0.30	≤ 0.30	≤ 0.40
Colour fastness	EN ISO 105 - B02	degree	6	6	6
Point contact resistance	VDE 0100	kOhm	> 200	> 200	> 200
Static electrical propensity	EN 1815	kV	2.0	2.0	2.0
Castor chair test (Type W)	ISO 4918	-	OK	OK	OK
Thermal resistance	EN 12667	sqm,K/W	0.044	0.044	0.04
Thermal conductivity	EN ISO 10456	W/(m.K)	0.0937	0.0937	0.17
Surface treatment	-	-	Neocare™	Neocare™	Neocare™
Chemical products resistance	EN ISO 26987	class		OK	
Anti-bacterial activity (E. coli - S. aureus - MRSA) <sup>(2)</sup> after 24 hours	EN ISO 22196 / JIS Z 2801	-	> 99.99% inhibits growth	> 99.99% inhibits growth	> 99.99% inhibits growth
Anti-viral activity (Human coronavirus) after 5h <sup>(2)</sup>	ISO 21702	-	> 98,65 % virucidal activity	> 98,65 % virucidal activity	> 98,65 % virucidal activity

INDOOR AIR QUALITY					
TVOC after 28 days	EN 16516	microgram/m <sup>3</sup>	< 10	< 10	< 10


CIRCULAR ECONOMY					
Certification	Cradle to Cradle	-	Bronze	Bronze	Silver

CE MARKING					
	EN 14041: 2004 AC: 2006	-			

[1] Glued according to certificate.

[2] The implementation of an effective cleaning method is the best defense against infection.

DOP numbers available from your local branch.

 Depending on light exposure, the product colour can vary due to the natural oxidation process of linoleum. This process is reversible. We recommend that the samples be exposed to sunlight for several hours prior to making a final color choice.



# TECHNIC LINOLEUM

Linodur  
0020 Spring Blue

---

# LINODUR



4.0 mm



HIGH MECHANICAL TRAFFIC RESISTANCE



0056 Marble Grey  
NCS: 3502-Y / LRV: 36.0



0020 Spring Blue  
NCS: 3020-B / LRV: 21.0



0081 Sparty Black  
NCS: 8500-N / LRV: 6.0



0024 Speckled Blue  
NCS: 4040-R80B / LRV: 14.0



0072 Peach Orange  
NCS: 2060-Y40R / LRV: 30.0



0011 Avocado Green  
NCS: 2050-G30Y / LRV: 29.0

# MARMORETTE LCH

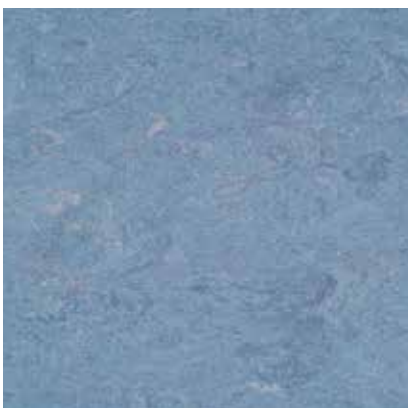


2.5 mm



$10^6 \leq R \leq 10^8$

DISSIPATIVE LINOLEUM FOR ESD AREAS



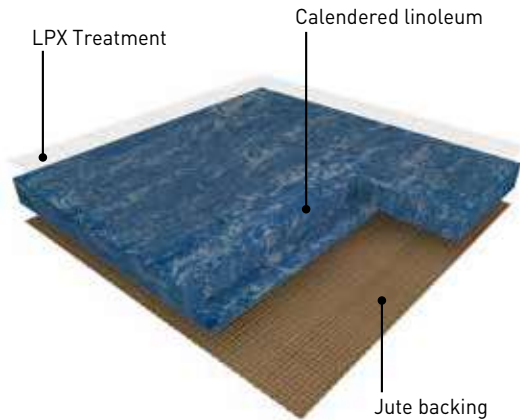
0023 Dusty Blue  
NCS: 4010-R90B / LRV: 30.0



0055 Ash Grey  
NCS: 3502-B / LRV: 39.0

# LINODUR

HIGH MECHANICAL TRAFFIC RESISTANCE



**LINODUR** is a calendered linoleum compact floorcovering in sheet, 2m wide, providing excellent resistance to everyday wear and tear in high pedestrian and mechanical traffic areas and has been designed to resist a 30kg/sqm dynamic load.

Its weight is 4700g/sqm in 4.0mm.

It features a moiré design and is composed of 98% bio based materials (linseed oil, wood flour, resins, cork, minerals and jute fabric) among of which 76% are rapidly renewable.

The flooring is equipped with LPX surface treatment, making the maintenance easy and the flooring long lasting.

The Camouflage welding rod makes the connections between the strips invisible.

It is antistatic, antibacterial according to ISO 22196 / JIS Z 2801.

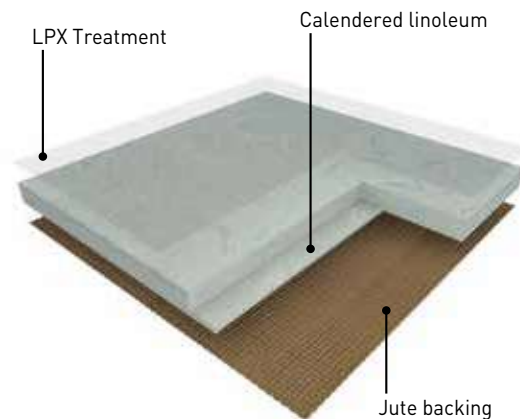
The flooring is 100% recyclable, is composed of minimum 25% recycled content and up to 40% recycled content, 100% controlled, is REACH compliant and rated CfI-s1 for fire resistance.

This product is manufactured in a plant awarded with ISO 9001 (quality), ISO 14 001 (environment) and ISO 50001 (energy) certifications.

The product also benefits from international certifications such as Floorscore® and Blue Angel (emissions).

# MARMORETTE LCH

DISSIPATIVE LINOLEUM FOR ESD AREAS



**MARMORETTE LCH** is a calendered linoleum compact dissipative floorcovering in sheet, 2m wide, providing excellent resistance to everyday wear and tear in high traffic areas.

Its vertical resistance is  $10^6 < R < 10^8 \Omega$ .

Its weight is 3000g/sqm in 2.5mm.

It features a marbled design and presents a matt finish, is composed of 98% bio based materials (linseed oil, wood flour, resins, cork, minerals and jute fabric) among of which 76% are rapidly renewable.

The flooring is equipped with LPX surface treatment, making the maintenance easy and the flooring long lasting.

The flooring is 100% recyclable, is composed of minimum 25% recycled content and up to 40% recycled content, 100% controlled, is REACH compliant and rated CfI-s1 for fire resistance.

It is designed and manufactured in a sustainable way in a plant awarded with ISO 9001 (quality), ISO 14001 (environment) and ISO 50001 (energy) certifications.

The Camouflage welding rod makes the connections between the strips invisible.

It is antistatic, antibacterial according to ISO 22196 / JIS Z 2801.

**DESCRIPTION**

Total thickness	EN ISO 24346	mm	4.0	2.5
Backing	-	-	Jute fabric	Jute fabric
Weight	EN ISO 23997	g/sqm	4700	3000
Width of sheet	EN ISO 24341	cm	200	200
Length of sheet	EN ISO 24341	m	20-31	20-31

**CLASSIFICATION**

Norm / Product specification	-	-	EN ISO 24011	EN ISO 24011
European classification	EN ISO 10874	class	23 / 34 / 43	23 / 34 / 43
Fire rating	EN 13501-1	class	C <sub>fl</sub> -s1 <sup>(1)</sup>	C <sub>fl</sub> -s1 <sup>(1)</sup>
Slip resistance	ASR A1.5 / DIN 51130 - BGR 181	class	R9	R9
Barefoot slipping	DIN 51097	class	A	-
Impact sound insulation	EN ISO 717-2	dB	6dB	3dB

**PERFORMANCES**

Residual indentation	EN ISO 24343-1	mm	≤ 0.20	≤ 0.11
Colour fastness	EN ISO 105 - B02	degree	6	6
Vertical resistance	EN 1081	Ohm	-	10 <sup>4</sup> ≤ R ≤ 10 <sup>8</sup>
Point contact resistance	VDE 0100	kOhm	> 200	> 100
Static electrical propensity	EN 1815	kV	2.0	2.0
Castor chair test (Type W)	ISO 4918	-	OK	OK
Thermal resistance	EN 12667	sqm,K/W	0.023	0.015
Thermal conductivity	EN ISO 10456	W/(m.K)	0.17	0.17
Surface treatment	-	-	LPX	LPX
Chemical products resistance	EN ISO 26987	class		OK
Anti-bacterial activity (E. coli - S. aureus - MRSA) <sup>(2)</sup> after 24 hours	EN ISO 22196 / JIS Z 2801	-	> 99.99% inhibits growth	> 99.99% inhibits growth

**CE MARKING**

EN 14041: 2004  
AC: 2006

-



(1) Glued according to certificate.

DOP numbers available from your local branch.



Depending on light exposure, the product colour can vary due to the natural oxidation process of linoleum. This process is reversible. We recommend that the samples be exposed to sunlight for several hours prior to making a final color choice.

# MORE THAN A FLOOR... WALL & FINISHES

For more details visit [gerflor.com](http://gerflor.com)



## FLOOR PROTECTION



REF.: 058X0001

## KORKMENT: CORK ACOUSTIC UNDERLAYER



REF.: R1020102

2mm



MATTING

## SKIRTINGS MDF

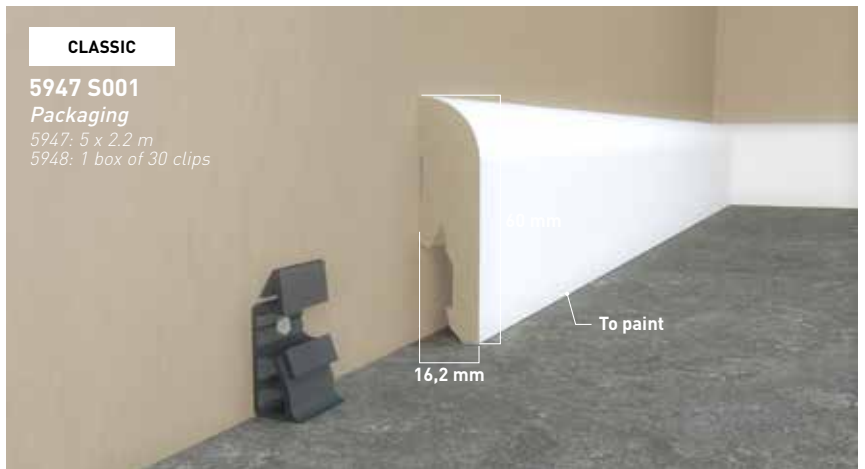
### CLASSIC

5947 S001

Packaging

5947: 5 x 2.2 m

5948: 1 box of 30 clips



Color: White

## SKIRTINGS COVE FORMER

### HYGIENE / ULTRA CLEANLINESS

32 mm: 40126512

38 mm: 40146512

Packaging

30 x 2 lm strips



Color: 6512

## SKIRTINGS HSLA

### HYGIENE / ULTRA CLEANLINESS



	Code
Compact 2.0mm	8009999
Compact 2.5mm	8019999
Compact 3.2mm	8029999
Conductive [LCH]	8049999


### WELDING ROD





Welding rod matching table available on: [gerflor.com](http://gerflor.com)

# CLEANING NEOCARE™-TREATED LINOLEUM FLOORS

Marmorette / Arabesque / Colorette  
Uni Walton / Lino Art















 **Damp sweeping equipment**  
Flexible mop preferably fitted with disposable, antistatic and/or pre-impregnated gauze strips

 **Manual washing equipment**  
Disposable microfibre mop or gauze

 **Single disk machine**

 **Autoscrubber**

 **Mechanical cleaning disk**  
3M (or equivalent) colour disks

	Equipment used	Cleaning products	Cleaning methods
<b>First use</b> <b>Manual or mechanical cleaning</b>	    or  if soiled	Neutral detergent or Alkaline detergent	<ul style="list-style-type: none"> <li>• Damp sweeping</li> <li>• Mechanical washing at 160-200 rpm (with water recovery)</li> </ul>
<b>Daily cleaning</b> <b>Manual cleaning</b>	 	Neutral detergent / Disinfectant detergent <sup>(1)</sup>	<ul style="list-style-type: none"> <li>• Damp sweeping</li> <li>• Manual washing with flat mop</li> <li>• Rinsing</li> </ul>
<b>OR</b>			
<b>Mechanical cleaning</b>	  	Neutral detergent	<ul style="list-style-type: none"> <li>• Damp sweeping</li> <li>• Mechanical washing at 160-200 rpm (with water recovery)</li> </ul>
<b>Deep cleaning</b> <b>Mechanical cleaning</b>	   or 	Alkaline detergent	<ul style="list-style-type: none"> <li>• Damp sweeping</li> <li>• Mechanical washing at 160-200 rpm (with water recovery)</li> </ul>

*(1) In areas where disinfection is essential (e.g. operating theatres, hospital rooms, etc.), alternate between using neutral detergent and amine-free disinfectant detergent.*

*These cleaning instructions have to be adapted depending on traffic and location of the area.*

In the case of **manual maintenance** and to offer you the best results in terms of hygiene and appearance, **Gerflor recommends that you use neutral and alkaline detergents with high wetting power** (complete spreading and cleaning of the entire floor surface).



**Installation &  
maintenance guidelines  
available on**



Gerflor DLW flooring products are to be installed in full accordance with Gerflor DLW installation instructions and recognized trade standards.

An effective, regular cleaning and maintenance program is vital for retaining a high appearance level.

Gerflor DLW flooring products should only be used as floorcoverings.

Note: Gerflor DLW reserve the right to amend this specification without giving prior notice. For the latest versions of the technical specifications, check our website: [www.gerflor.com](http://www.gerflor.com)

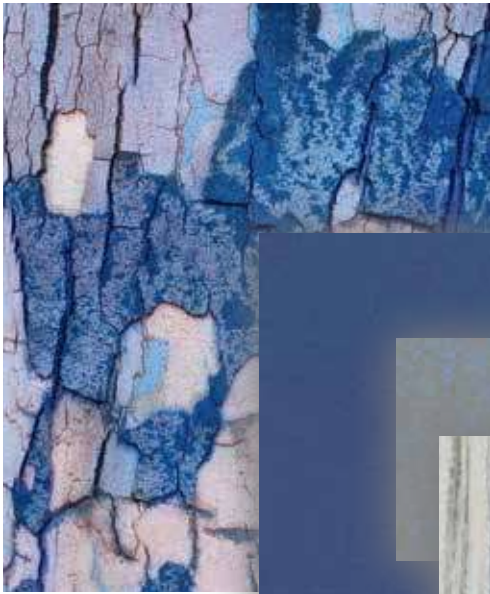


Uni Walton  
0100 Ocean Blue

---

Lino Art Flow  
0030 Rain

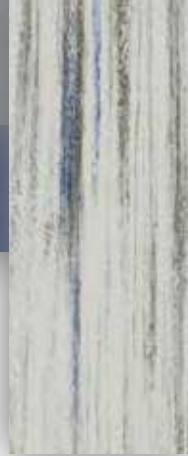
---



**Lino Art Urban**  
0566 Shining Blue



**Uni Walton**  
0100 Ocean Blue



**Lino Art Flow**  
0030 Rain



# Mix and match

**Visualize your project**

[interiordesigner.gerflor.com](http://interiordesigner.gerflor.com)



**Lino Art Urban**  
0555 Flashy Street Grey



**Lino Art Flow**  
0024 Magma



**Marmorette**  
0117 Mandarin Orange



# THE PROOF IS IN THE CUSTOMER EXPERIENCE





Language School  
Underhub,  
Kiev, Ukraine



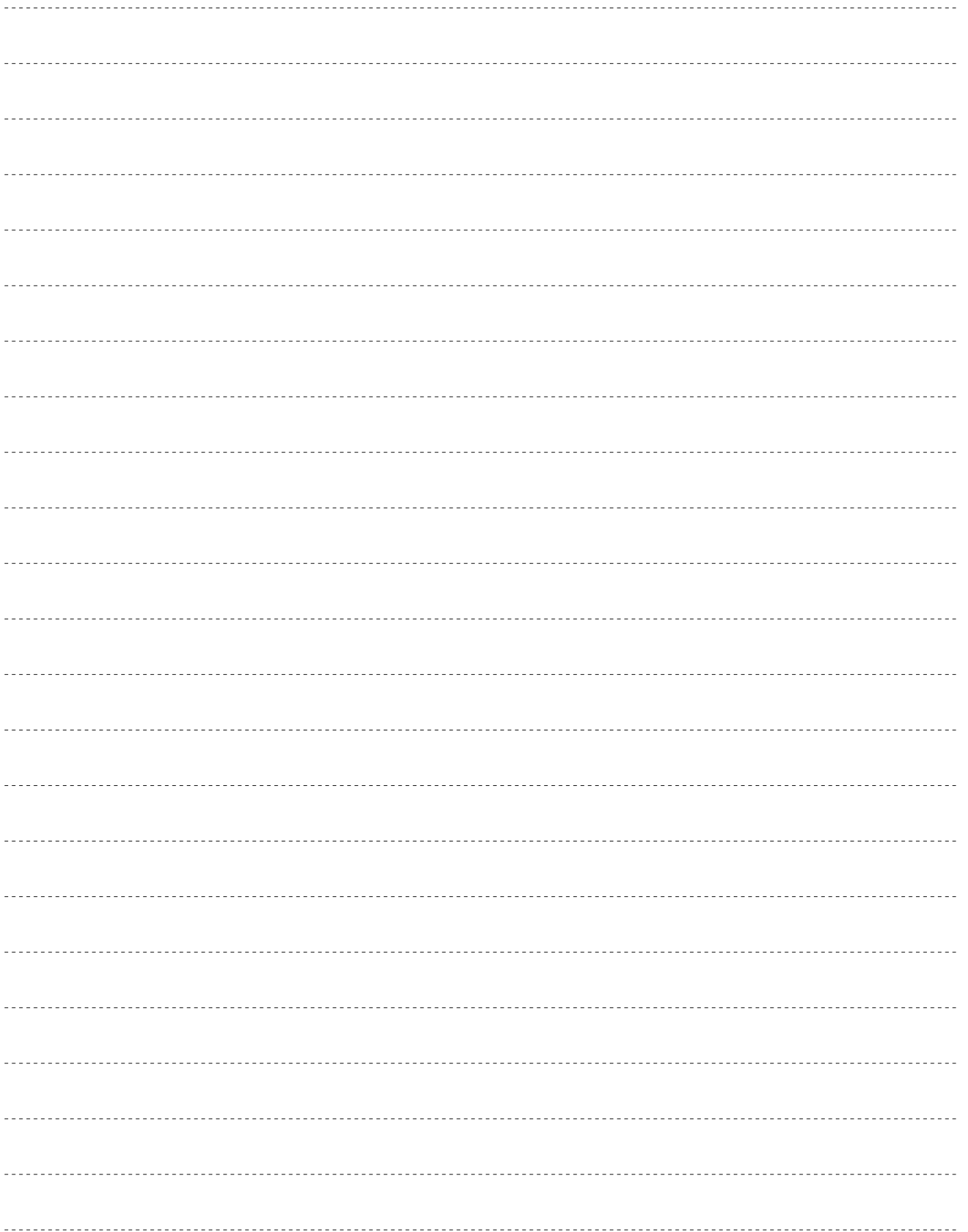
Educational Center  
El Chaparral,  
Granada, Spain

TESTIMONIAL:

"After trying DLW linoleum equipped with Neocare™, I would definitely recommend it for healthcare projects, as it meets our demanding standards in terms of cleaning and hygiene."

Anita Heidelberg, Head of Cleaning and Disinfection,  
Glostrup Hospital, Denmark







Z0045649

## DLW Linoleum, Creative by Nature

At Gerflor, we believe that architecture has the power to improve people's lives.

Nature is our greatest source of inspiration. With the DLW Linoleum offer, we can provide architects with a collection of 159 colors, these are natural designs, that can enhance the sustainability and the creativity of their projects.

Made in Germany since 1882 and Cradle to Cradle certified™ Silver, the DLW Linoleum products are made of 98% bio based materials including linseed oil, wood, limestone, jute and resin.

It's simply our way of connecting people closer to nature.

## Mix and match COLLECTIONS

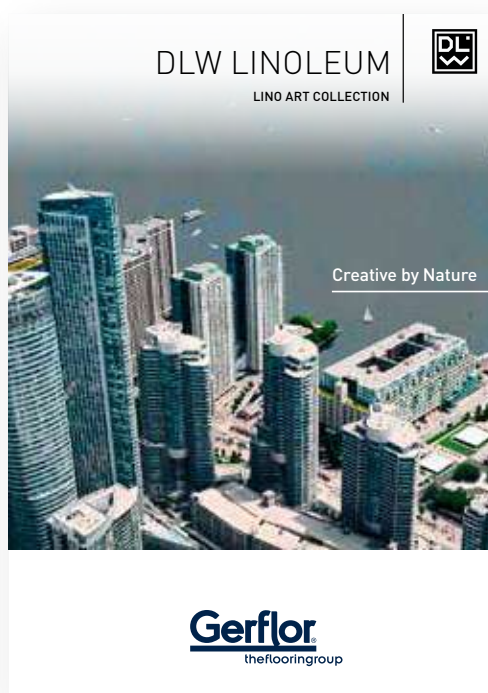
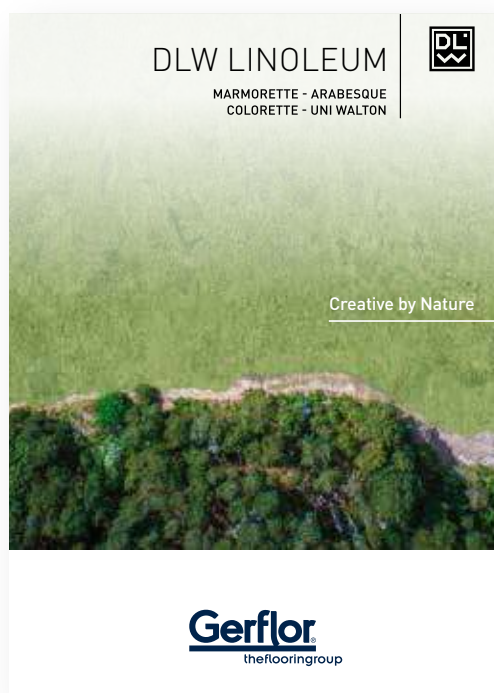


Photo credits: Gerflor - Realisation: jpe - 072020 - Z0045649 - Indicative documentation cost: 2 €