



α

Fusion

COLLECTION

Art

Index

1/ With age comes beauty	p.5
2/ Raw by nature, refined by design	p.7
3/ Art Fusion	p.9
4/ Marble Fusion	p.11
5/ Fusion - the shades	p.13
6/ Technical ingenuity	p.19
technical specifications	p.20-23

Marble



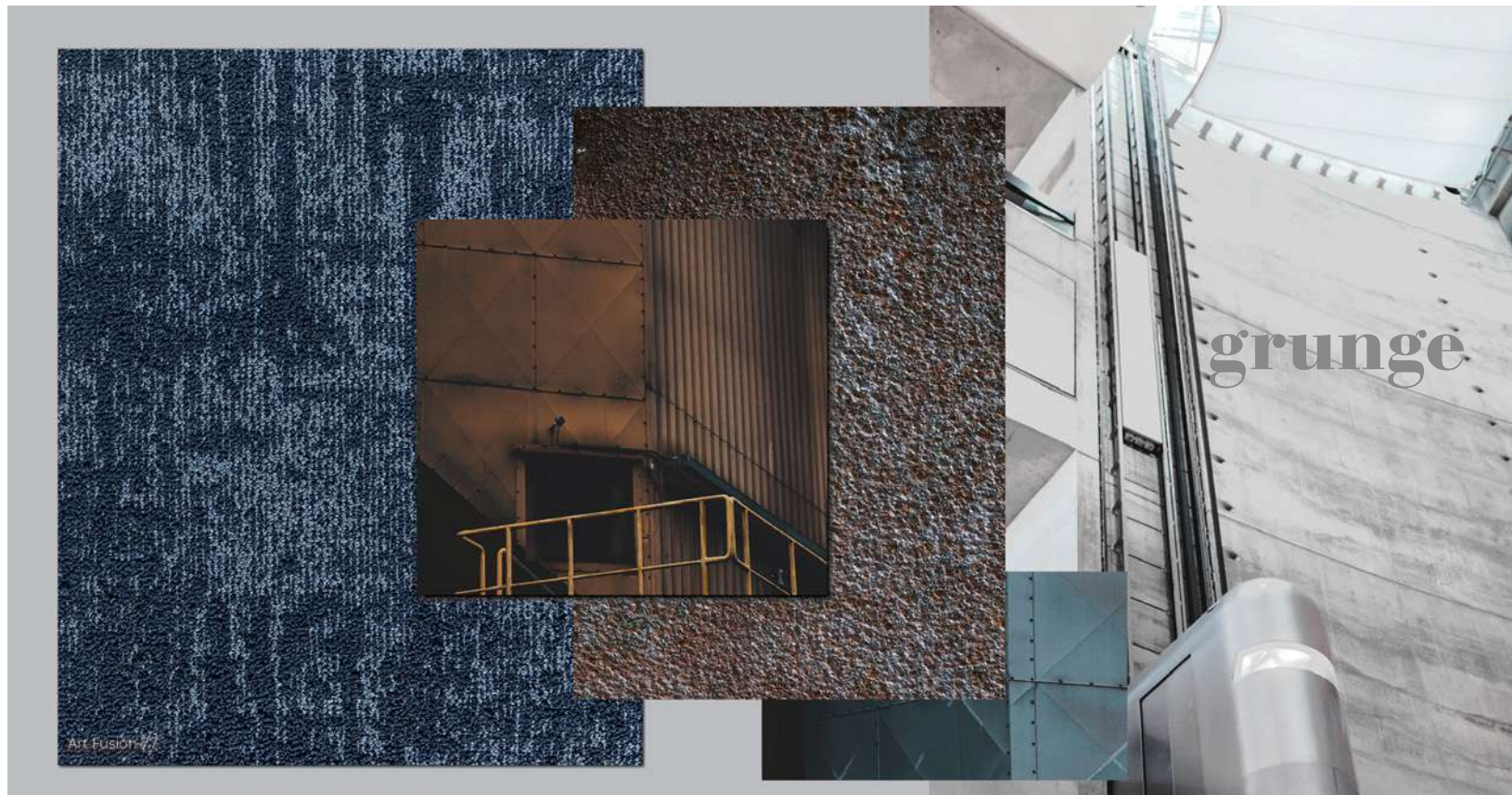
Fusion

COLLECTION

Fusion, for beauty that never fades.

Inspired by interior styles **Grunge & Marble**, the Fusion collection offers 2 commercial carpets designs. With the impressive aspect of **Marble Fusion** and **Art Fusion**, interiors can benefit from translations of contemporary finishes into eye-catching soft flooring.

Using **i-tuft technology** to create impressively large pattern designs, these high-performance commercial carpets are certainly unique. Both ranges are made from 100% Imprel® (solution dyed polyamid) for colour fastness and easy cleaning.



1/

With age comes beauty,

as the saying goes. Consider the natural environment, with its weathered trees bearing the jagged marks of time, while ancient rock formations display the bright scratches of glacial abrasion.

For centuries, sculptors, painters and artistic souls have used the splendour of aged materials as their muse. So did our designers when they created Fusion, one of the key collections of arc edition. Reminiscent of the industrial **grunge** style, battered steel and rusty iron were common sources of inspiration. Venerable Italian **marble** symbolises the revival of luxurious Carrara and Arabescato finishes in interior design.

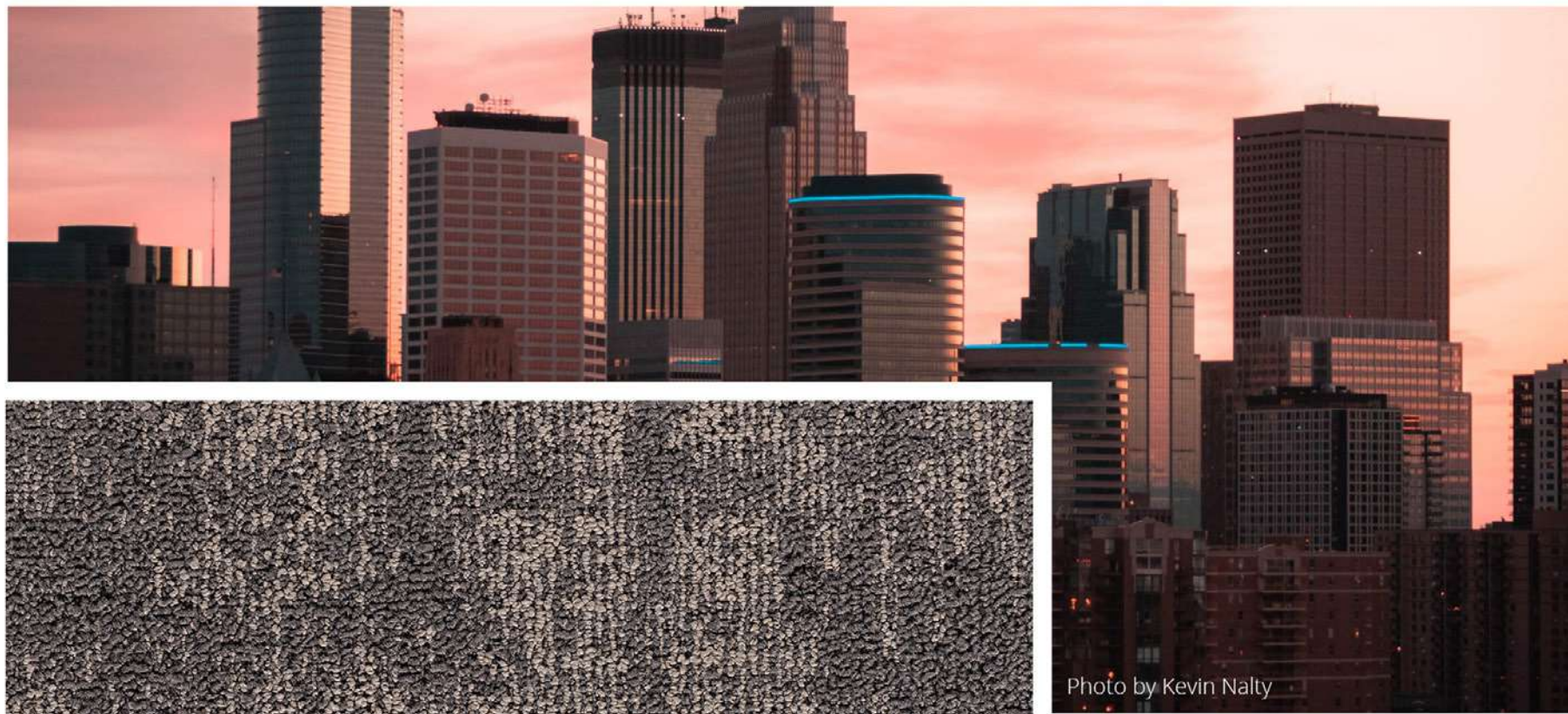
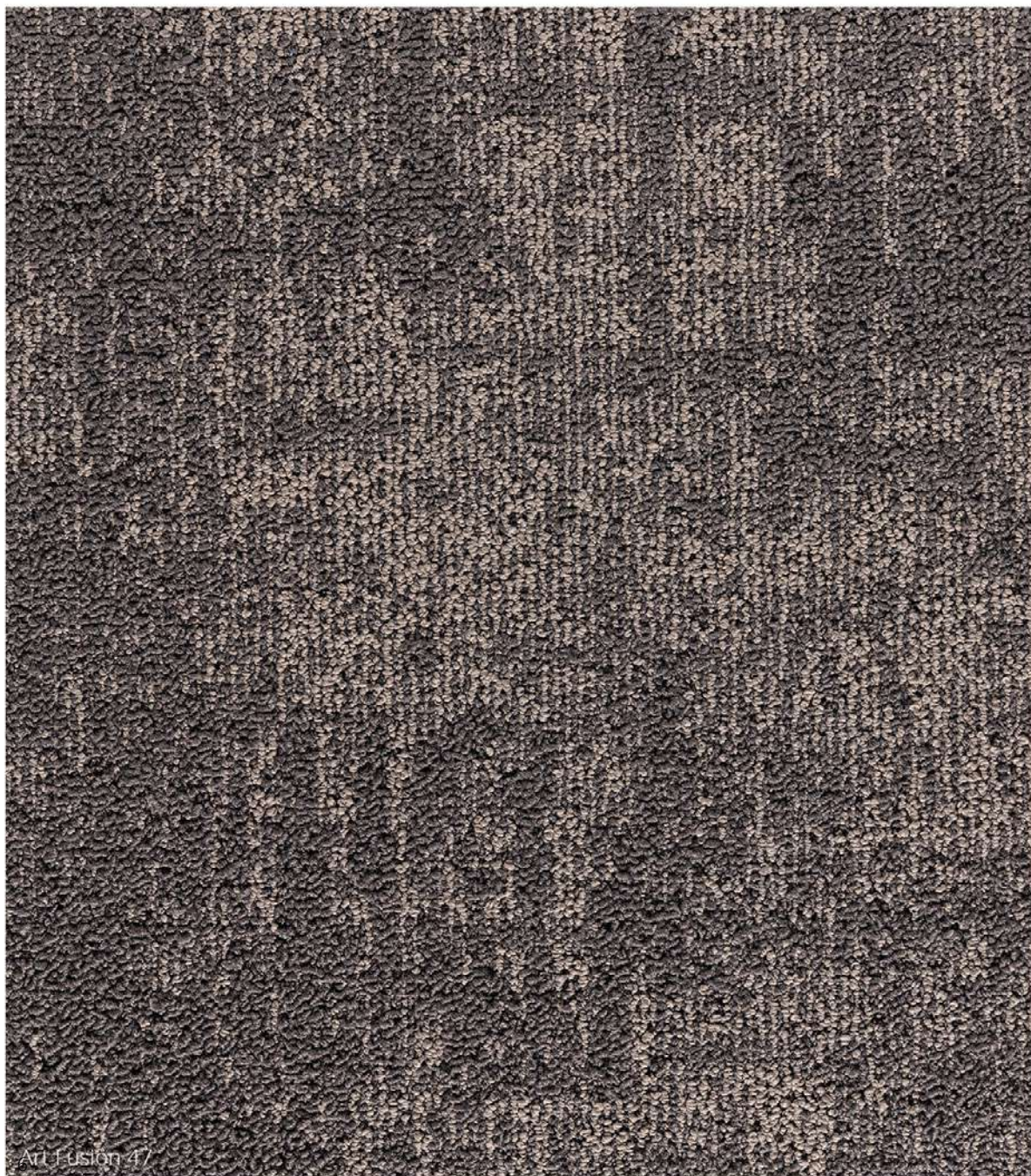


Photo by Kevin Nalty



Art Fusion 17



SixFive

2/ **Raw by nature, refined by design**

With Fusion our designers have managed to capture nature's compelling rawness in a unique flooring design that will surely make an impact. By translating these cold, hard surfaces into a textile floor covering that softens the overall look and the feel, Fusion products radiate unexpected warmth and cosiness.

3/ **Art Fusion**

Art Fusion is every bit the eye-catcher due to its raw, edgy look. The carpet has a solid-loop pile construction and is available in contemporary colours.

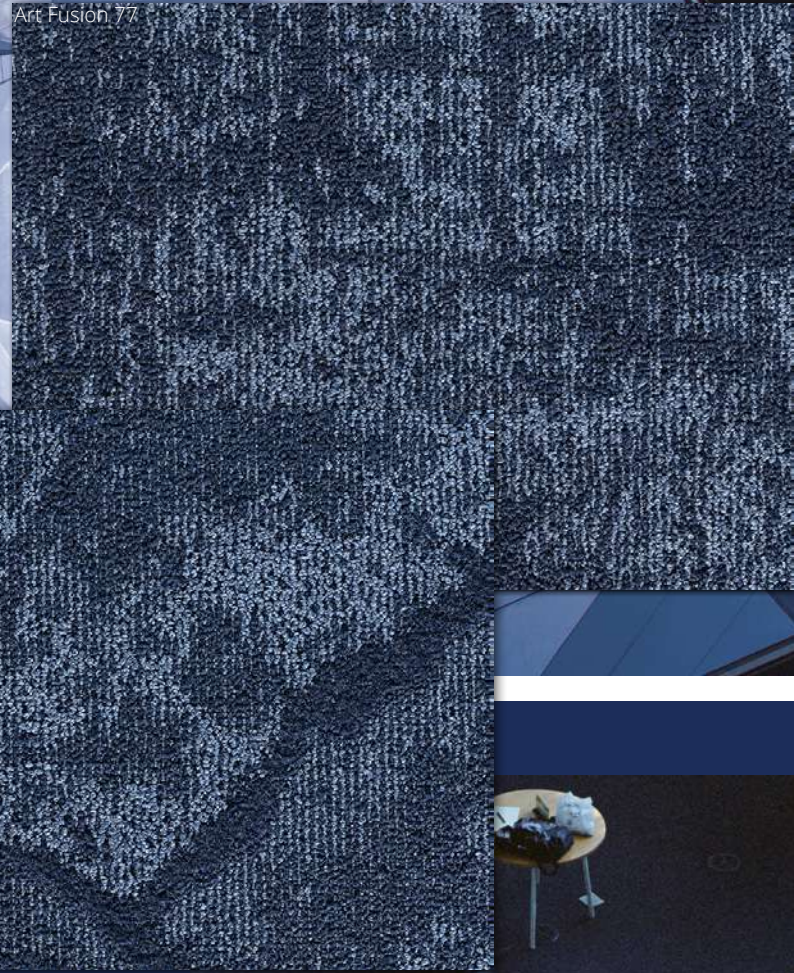
Opt for blue Art Fusion and combine it with contrasting hues to create cohesion and gravity. Examples include milky pastels, grounded neutrals or deep natural blue tones.

4/ **Marble Fusion**

With its subtle pattern, Marble Fusion offers character in the form of a stunning marble look which is both classic and timeless, thanks to its contemporary colour palette. The flooring has a dense, high and low-loop structure and plays with the combination of shiny and matt yarns.

For a more sophisticated look, choose Marble Fusion in earthen brown to make a modern match between fancy copper accents and open glass structures. Simply stunning!





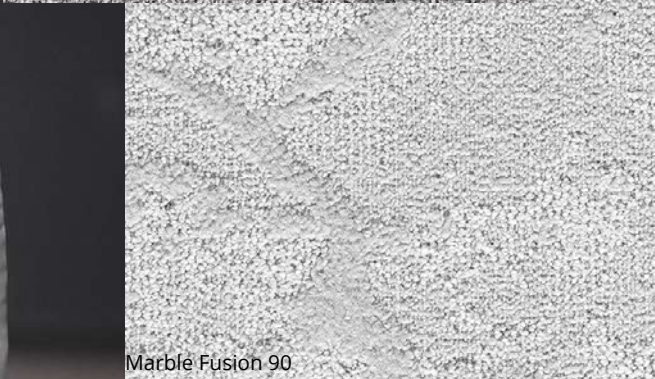
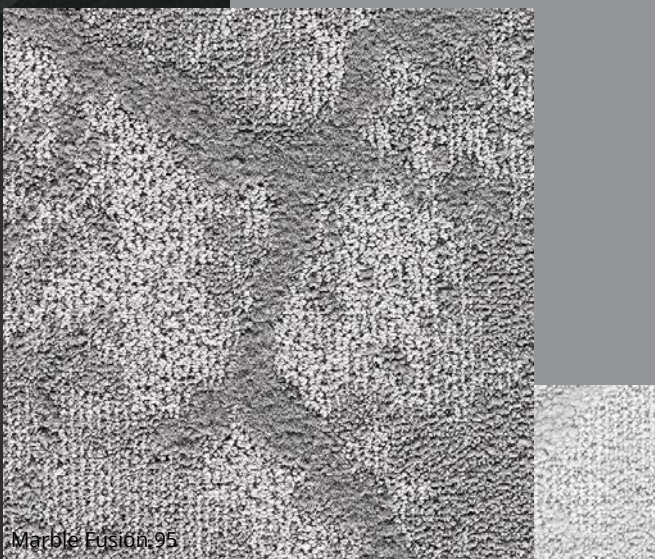
5/

Fusion - the shades

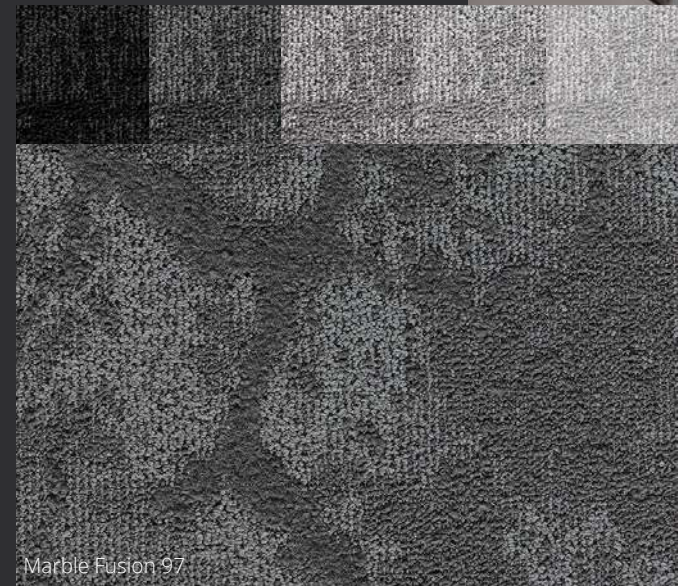
all about blue

Use Fusion's blue colour to make a statement in your project and create a dynamic backdrop to your interior. Its saturation reminds of midnight tones and evokes a more reflective feeling suitable for a study environment.

The relaxing and serene qualities of the Fusion blue create a sense of stability and tranquility, challenging us to think more deeply and open the flow of communication.



Art Fusion



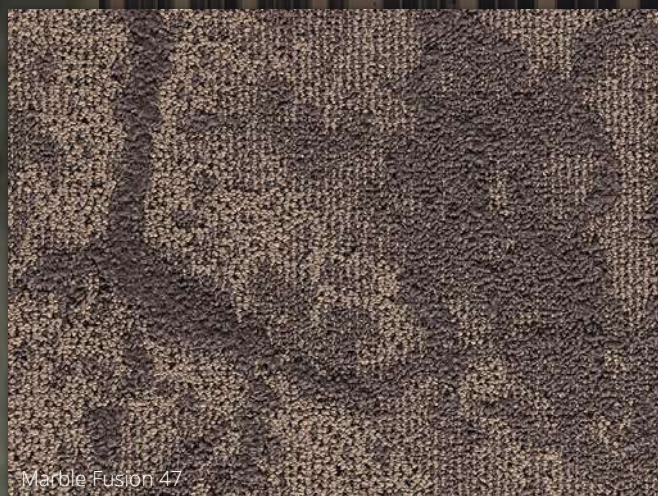
by Elias Rumelis

why we like it the grey way

Looking for a way to illuminate your space? Opt for light grey, a minimalistic tone that's clean, bright and modern. To add warmth and gravitas to the room, go for warm grey shades. For a laid-back, harmonious and subtle feel, cool grey and dark grey really capture the essence of sophistication.



by Gestuz



Marble Fusion 47



Art Fusion 47



by SixnFive

by SixnFive

brown exudes comfort

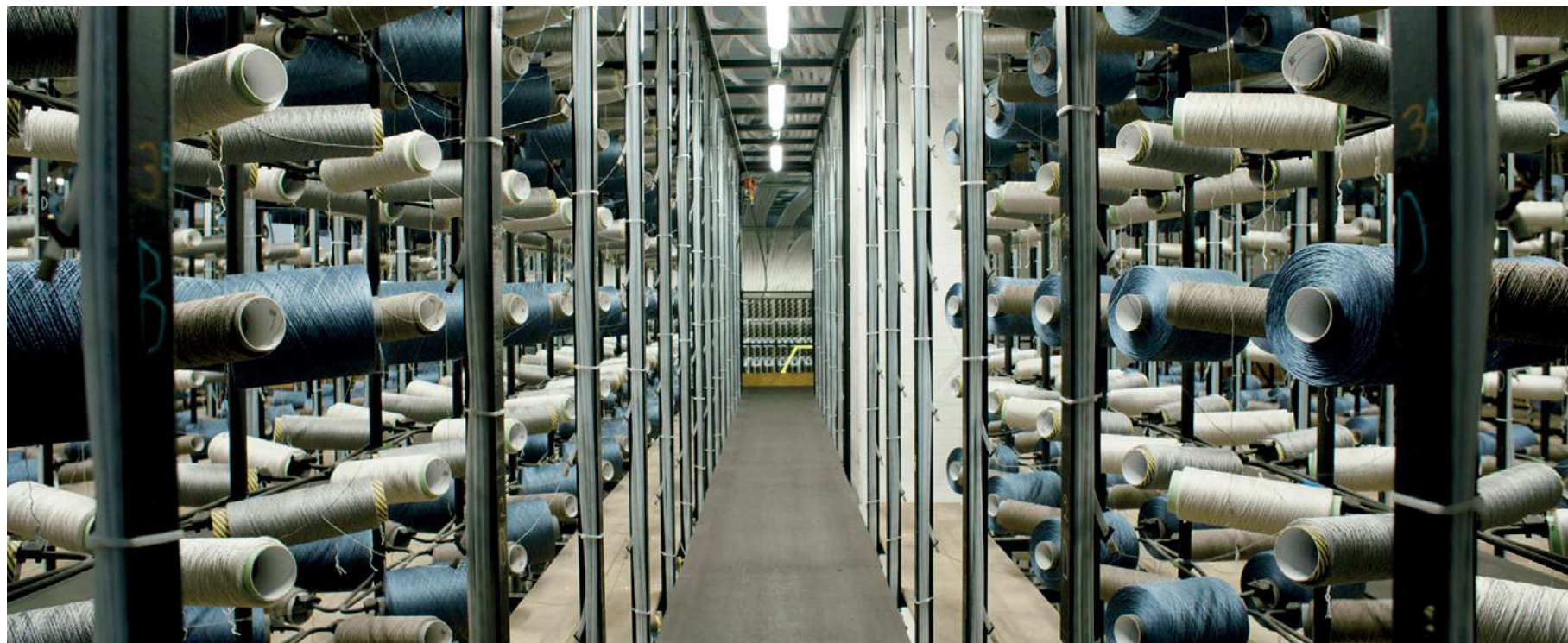
Fusions brown colour is a safe and warm shade echoing natural, earthy elements. If chosen, it balances decoration and brings refuge-like harmony to spaces.

Brown has always been around and can easily blend in with other contemporary tones. Add white or grey shades and highlight with some metal glow or go for a combination with pastel hues. Whatever your choice, Fusion brown allows you to mix colours together in an elegant and seamless way.

6/ **Technical ingenuity underneath the surface**

It may not be visible to the naked eye, but the secret of our exquisite flooring lies in its skilled manufacturing. Thanks to our computerised iTuft technology, we are able to create unique, large-pattern designs in contrasting colour schemes.

Both Art and Marble Fusion are made from 100% Imprel® Solution Dyed polyamide, for colour fastness and resistance to fading. This technology also unlocks easy cleaning, as the fibre is saturated with colour and repels stains.



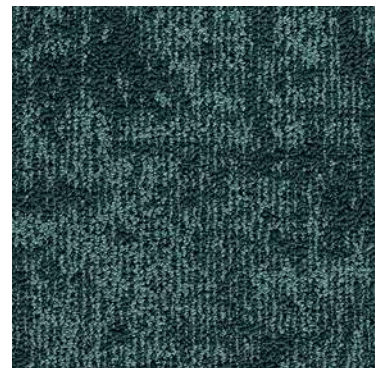
Art Fusion | COLOURS



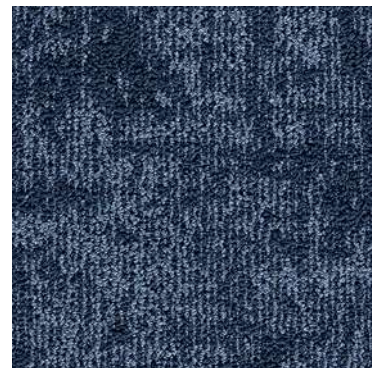
Art Fusion 35



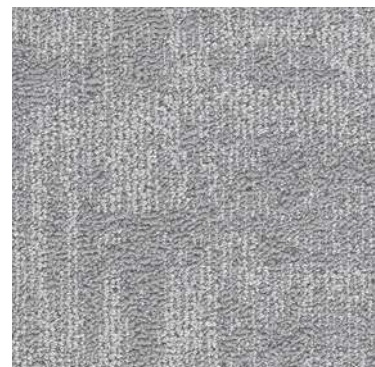
Art Fusion 47



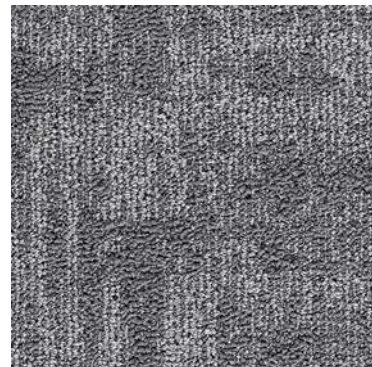
Art Fusion 27



Art Fusion 77



Art Fusion 90



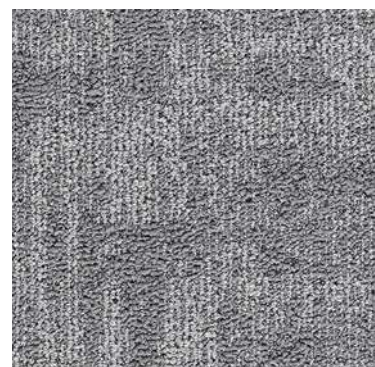
Art Fusion 96



Art Fusion 97



Art Fusion 98



Art Fusion 95

Art Fusion | TECHNICAL SPECIFICATIONS

CONSTRUCTION

Tufting 1/12" loop pile

PILE MATERIAL

100% PA 6 IMPREL® solution dyed

PRIMARY BACKING

Non woven PES

SECONDARY BACKING

TwinBack

PILE WEIGHT

Ca. 780 gr/m²

TOTAL WEIGHT

Ca. 2.400 gr/m²

PILE HEIGHT

Ca. 4,4 mm

TOTAL HEIGHT

Ca. 7,8 mm

TUFT DENSITY

Ca. 282 000/m²

PILE DENSITY

Ca. 0.131 g/cm³

CLASSIFICATION

EN 1307

32 - LC2

CASTOR CHAIR SUITABILITY

EN 985

A: intensive use

STAIR SUITABILITY

EN 1963

A: intensive use

PERMANENTLY ANTISTATIC

ISO 6356

< 2 kV

IMPACT NOISE RATING

ISO 140-8

26 dB ΔLw

SOUND ABSORPTION

ISO 354

0.25 aw

THERMAL RESISTANCE

ISO 8302

0.10 m² K/W

FASTNESS TO LIGHT

ISO 105-B02

≥ 7

COLOUR FASTNESS TO WATER

EN ISO 105-E01

≥ 4-5

RUBBING FASTNESS

EN ISO 105-X12

≥ 4

FIRE RESISTANCE

EN 13501-1

Cfl-s1

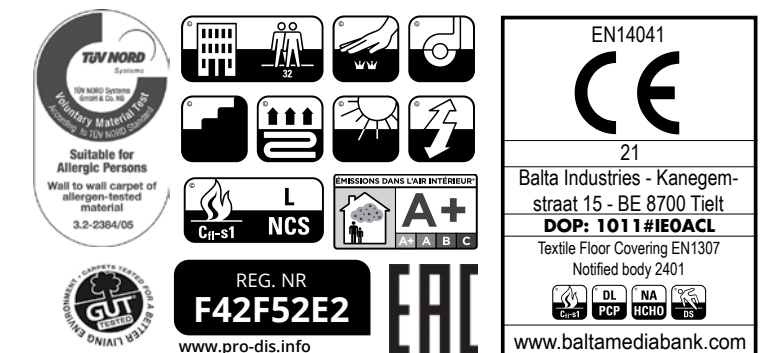
NUMBER OF COLOURS

9

WIDTH

EN ISO 3018

ca. 400 cm





Balta Industries nv
Kanegemstraat 15 - B-8700 Tielit - Belgium - T +32 (0)51 42 44 11
info@arcedition.com - www.arcedition.com

 **arc edition**