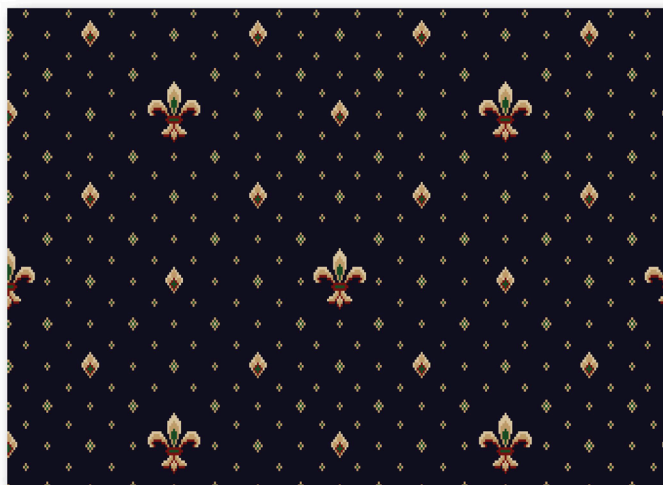




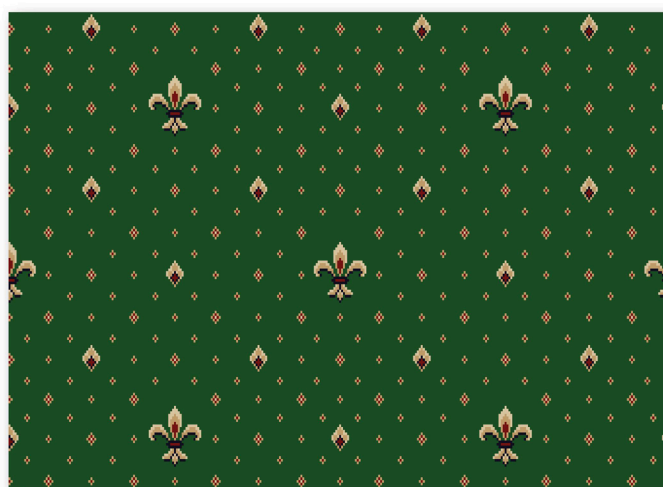
▲ Regel Red 10



▲ Midnight 30



▲ Mocha 80



▲ Meadow 40

Manufacturing process	<b>Traditionally Woven Wilton</b>	Number of points	<b>ca. 340.000/m<sup>2</sup></b>
Pile content	<b>100% PP StainSafe®</b>	Width	<b>400 cm</b>
Pile weight	<b>ca. 1.320 gr/m<sup>2</sup></b>	Design Repeat	<b>50 (W) x 50 (H) cm</b>
Total weight	<b>ca. 2.055 gr/m<sup>2</sup></b>	Light Fastness	<b>5-6</b>
Pile height	<b>ca. 7,5 mm</b>	Water resistance	<b>4-5</b>
Total height	<b>ca. 10 mm</b>	Characteristics	<b>Heavy Domestic / Light contrast use</b>
Shot density	<b>50/10cm</b>	Thermal resistance	<b>0,13 m<sup>2</sup> K/W (Tog 1,3)</b>
Warp rate	<b>34/10 cm</b>	Installation	<b>Underlay and gripper rods BS5325</b>



Onder voorbehoud van wijzigingen van de technische specificaties - Sous réserve de modifications techniques - Unter Vorbehalt von Änderungen der technischen Daten - All rights reserved to alter technical specifications. Kijk voor de uitgebreide garantievoorwaarden op [www.stain-safe.com](http://www.stain-safe.com) - Pour le détail des conditions de garantie, rendez-vous sur [www.stain-safe.com](http://www.stain-safe.com) - Detaillierte Garantiebedingungen finden Sie auf [www.stain-safe.com](http://www.stain-safe.com) - For detailed warranty conditions, see [www.stain-safe.com](http://www.stain-safe.com)

Balta Broadloom  
 Wakkensteenweg 2, 8710 Sint-Baafs-Vijve • Belgium  
 T +32 (0)56 62 22 11 • F +32 (0)56 62 23 55 • [broadloom@baltagroup.com](mailto:broadloom@baltagroup.com) • [www.baltagroup.com](http://www.baltagroup.com)