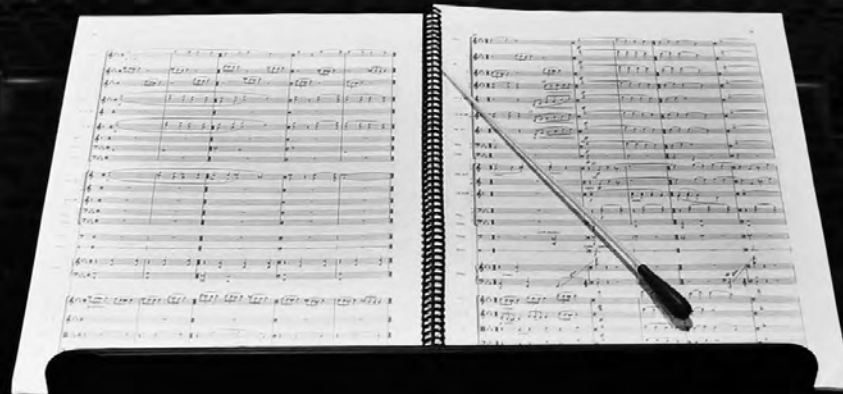
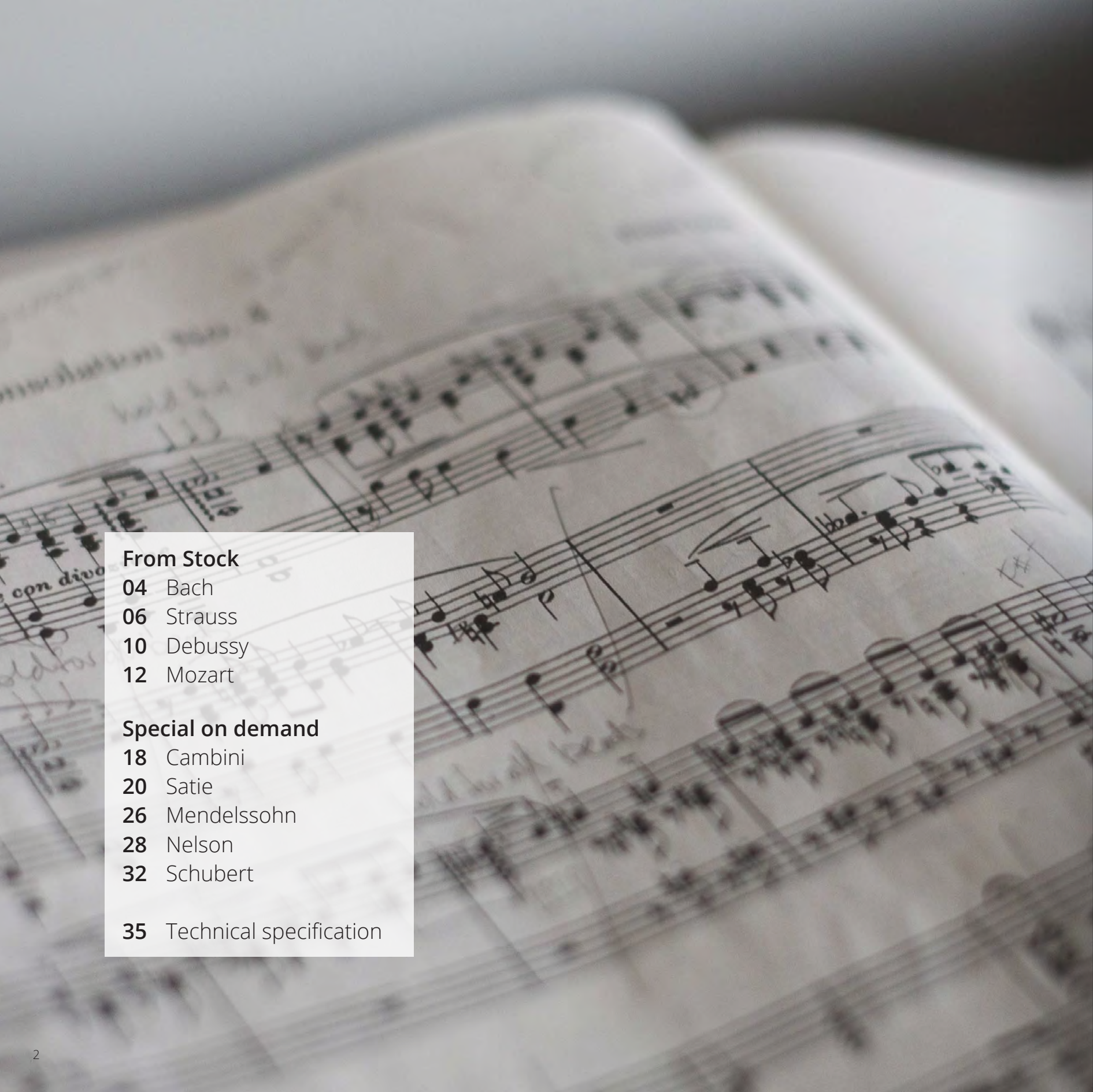


arc edition®

THE
**Suite
Symphony**
COLLECTION





From Stock

- 04 Bach
- 06 Strauss
- 10 Debussy
- 12 Mozart

Special on demand

- 18 Cambini
- 20 Satie
- 26 Mendelssohn
- 28 Nelson
- 32 Schubert

- 35 Technical specification



THE Suite Symphony

COLLECTION

Much like composing a piece of music, the composition of a room is all about finding the best arrangement. About striking the right note, with colours, patterns and objects. About finding harmony in the pieces you put together. And then there's music in the air. The songful sound of a suite symphony.

Care to tune in?



Johann Sebastian Bach,
Geb. 21 März 1685 in Eisenach, gest. 28 Juli 1750 in Leipzig.

Bach



Set the foundation for a majestic setting with this regal pattern. An elegant statement choice that adds impact to any room. Introduce the grandeur of the largest orchestra hall into your chambers.

BACH 10





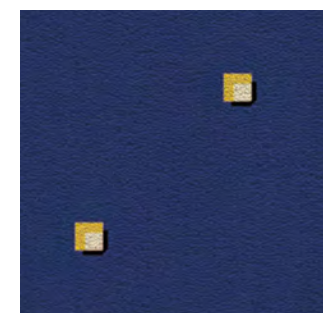
Johann Baptist Strauss,
Geb. 25 Oktober 1825 in Wien, gest. 3 Juni 1899 in Wien.

Strauss



Music is known to boost our focus and concentration. Strauss' square motif is the perfect background piece for your office or meeting room. Ready to call the tune?

STRAUSS 77



Bach



39



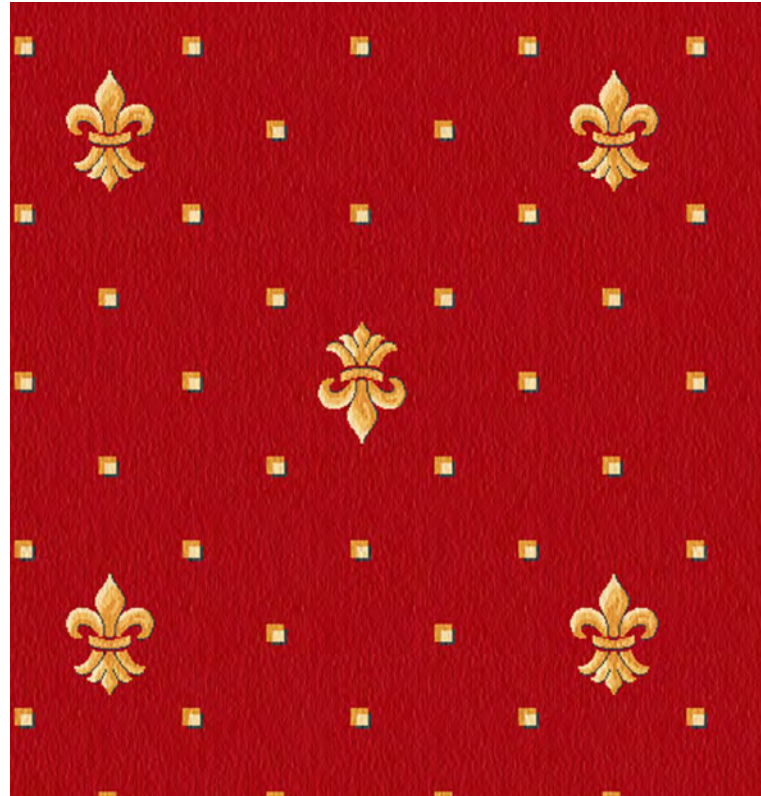
195



77



10



23

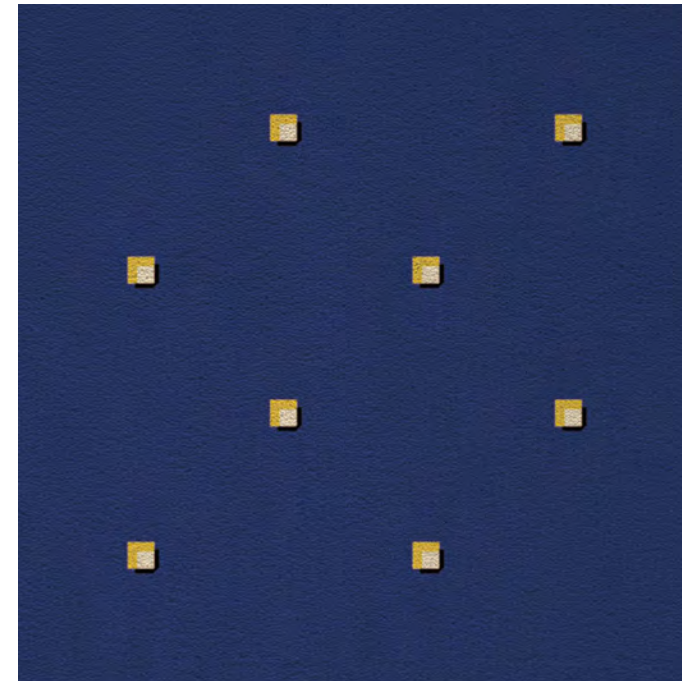


ACTION BACK 400 CM
100% PA 6 IMPREL®
↔ 12 X ↕ 12 CM

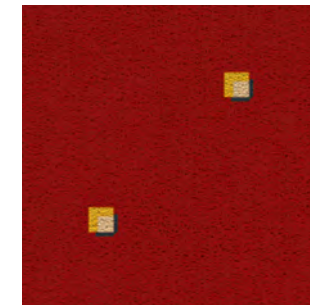
Strauss



77



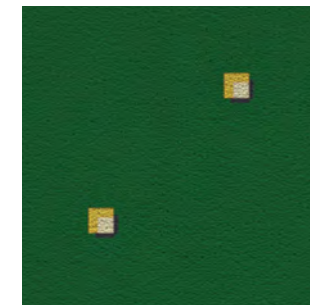
10



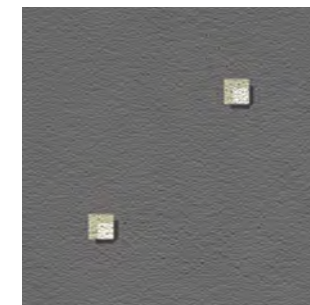
39



23



195



ACTION BACK 400 CM
100% PA 6 IMPREL®
↔ 32 X ↕ 32 CM



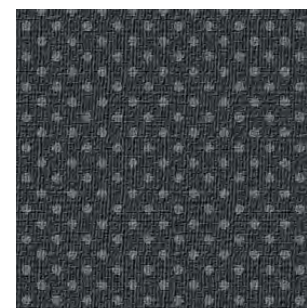
Claude Debussy.
Geb. 22 August 1862 in Saint-Germain-en-Laye; gest. 25 März 1918 in Paris.

Debussy



As refined as his *Claire de Lune*, Debussy's fine dot pattern is a modest yet effective choice. Setting a harmonious mood with this classic motif happens naturally, in a way that is almost poetic.

DEBUSSY 297





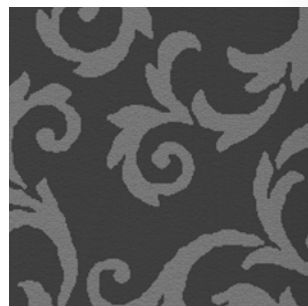
Wolfgang Amade Mozart,
Geb. 27 Jan. 1756 in Salzburg, gest. 5 Dez. 1791 in Wien.

Mozart



Just like a mirror, Mozart's baroque swirl pattern adds dimension to any room. Create space to move and dance in a timeless and sophisticated atmosphere.

MOZART 297



Mozart



197



16



234



26



79



297



ACTION BACK 400 CM
100% PA 6 IMPREL®
↔ 94 X ↕ 94 CM

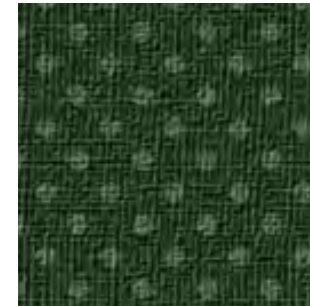
Debussy



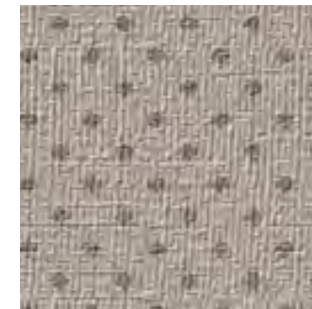
016



026



234



297



079



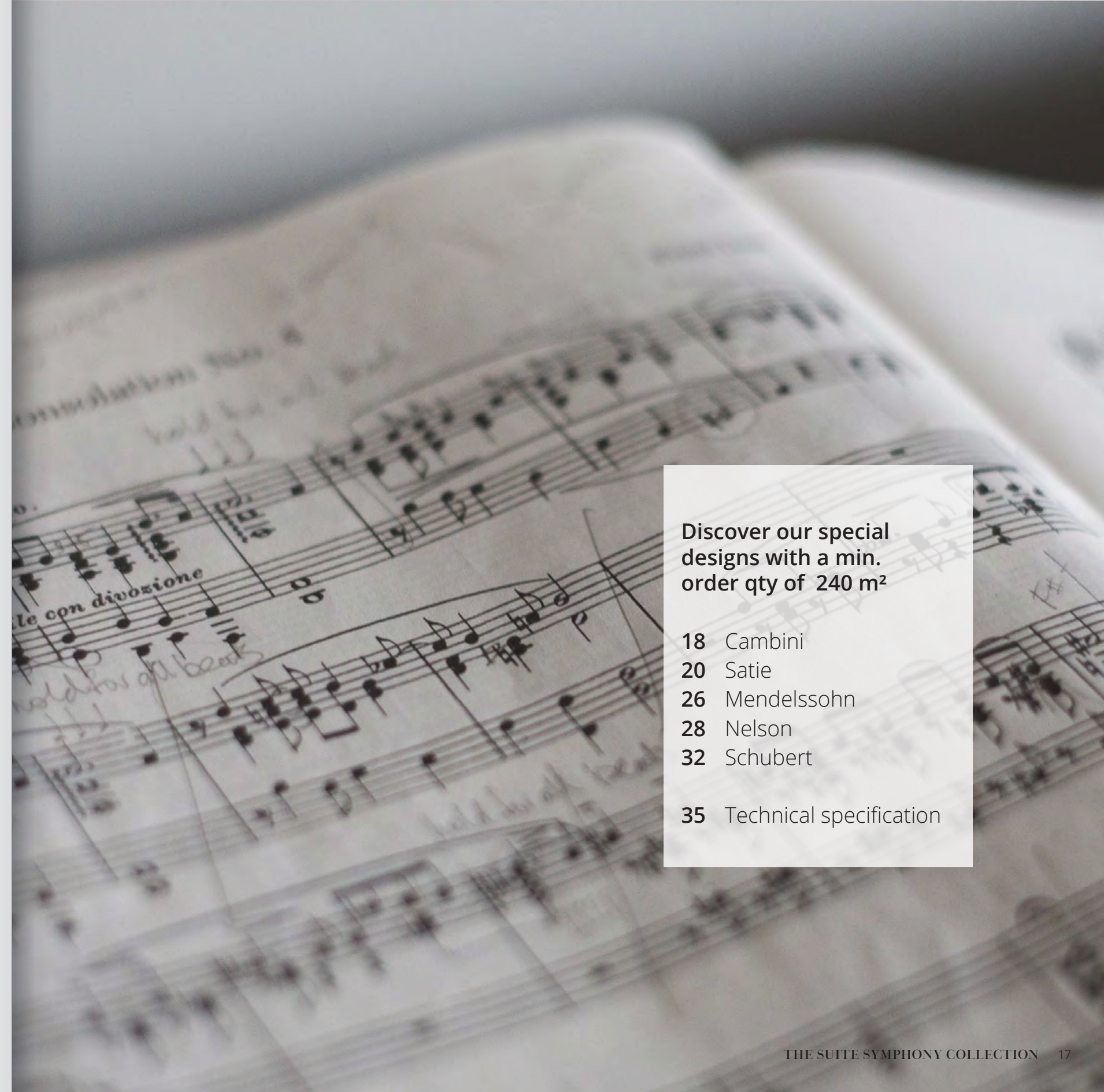
ACTION BACK 400 CM
100% PA 6 IMPREL®
↔ 2,3 X ↕ 2,3 CM



THE
**Suite
Symphony**
COLLECTION

SPECIAL DESIGNS

ae arc **edition**[®]



Discover our special designs with a min. order qty of 240 m²

- 18 Cambini
- 20 Satie
- 26 Mendelssohn
- 28 Nelson
- 32 Schubert

- 35 Technical specification



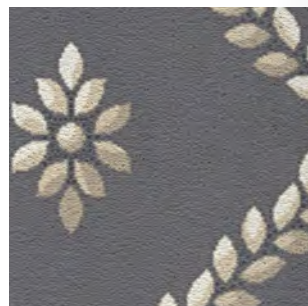
Giuseppe Maria Gioacchino Cambini.
Geb. 13 Februar 1746 in Livorno, gest. 29 Dezember 1825 in Paris.

Cambini



Patterns are essential to any composition.
In music and design. The right combination will
set the tone for a mesmerising melody.
Ready to style? Compose away
with Cambini's diamond pattern.

CAMBINI 95





Erik Satie.
Geb. 17. Mai 1866 in Honfleur, gest. 1. Juli 1925 in Paris.

Satie



Originally, chamber music was music composed for the home. The key to creating a warm space is to add tones with a familiar ring to them. Feel like home, away from home, with Satie's welcoming design.

SATIE 39



Cambini



47



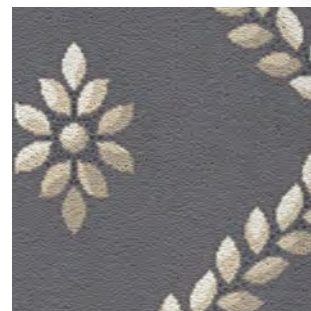
39



49



95



77



10



23



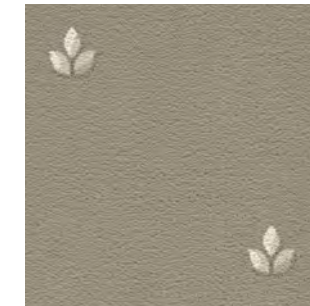
Special production:
minimum order
quantity of 240 m²

ACTION BACK 400 CM
100% PA 6 IMPREL®
↔ 24 X ↕ 24 CM

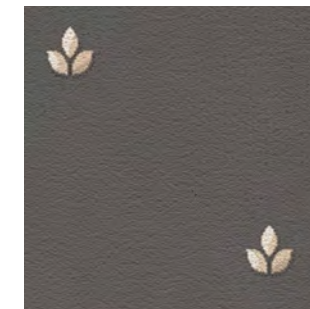
Satie



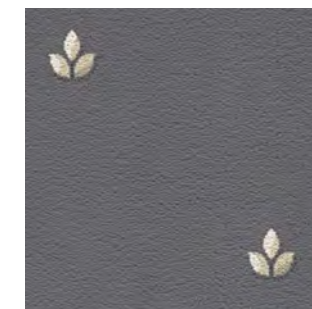
39



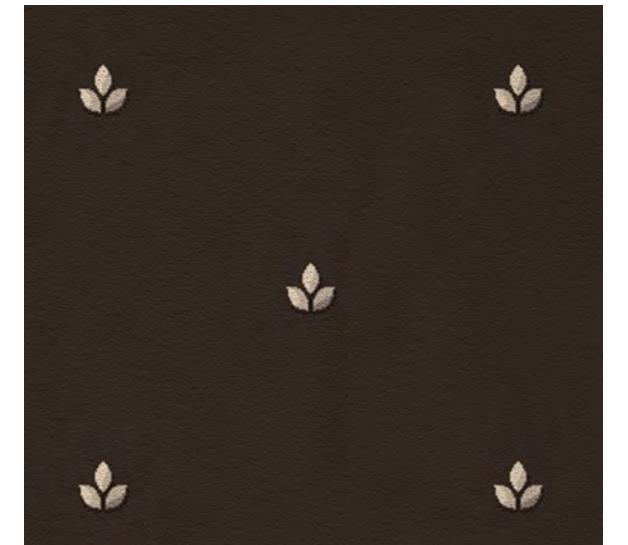
47



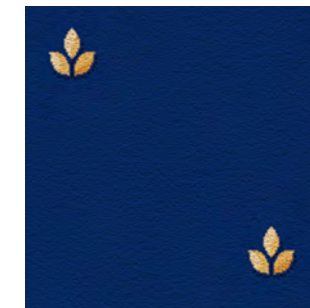
95



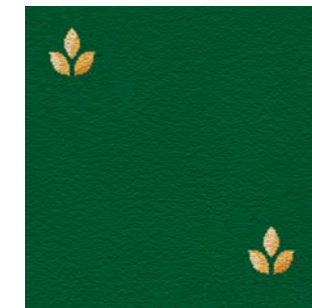
49



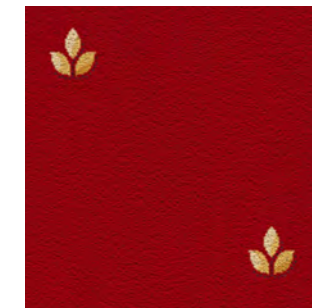
77



23



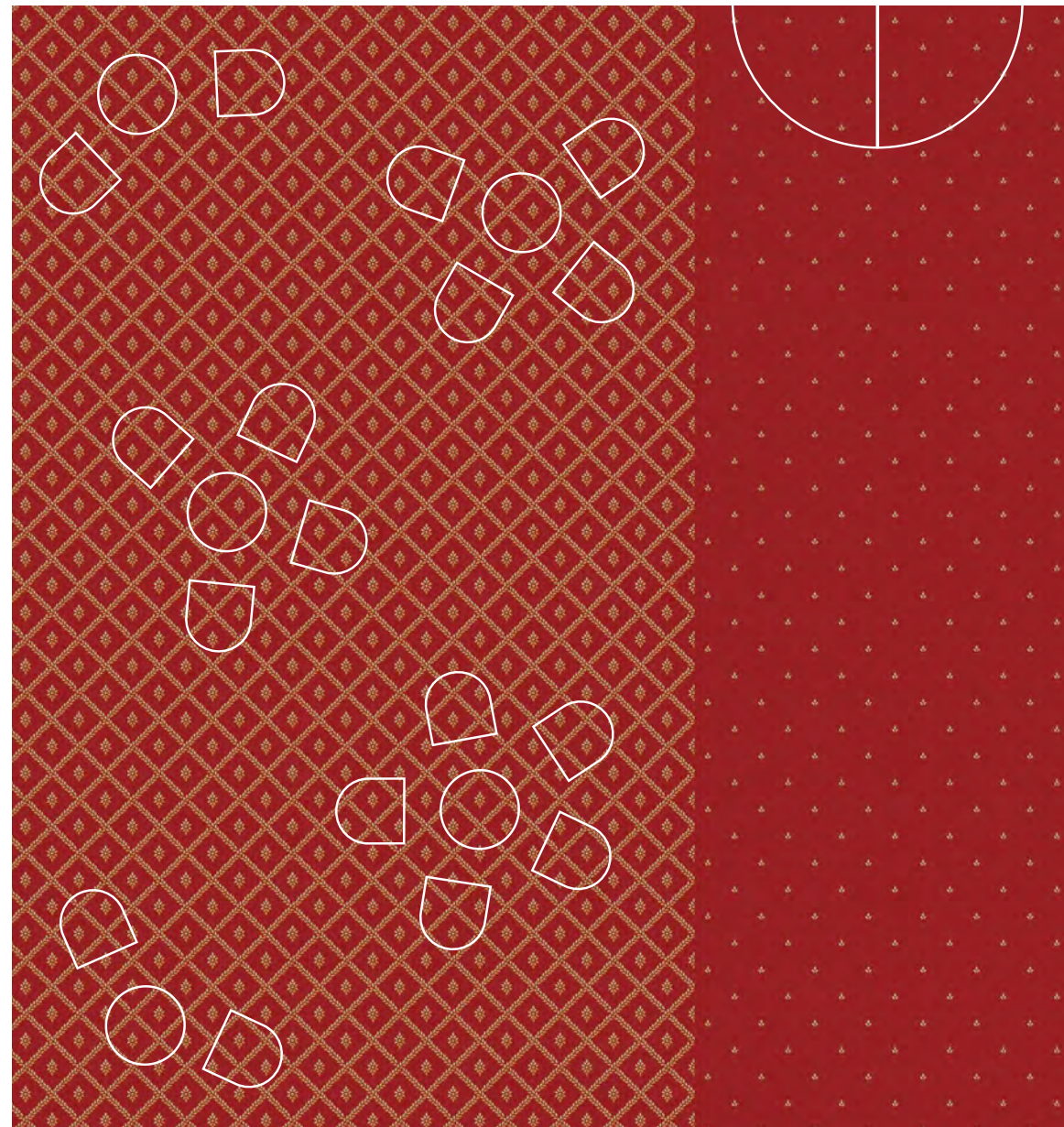
10



Special production:
minimum order
quantity of 240 m²

ACTION BACK 400 CM
100% PA 6 IMPREL®
↔ 24 X ↕ 24 CM

COMBINE SATIE & CAMBINI





Felix Mendelssohn - Bartholdy.
Geb. 3 Febr. 1809 in Hamburg; gest. 4 Nov. 1847 in Leipzig.

Mendelssohn



Not sure if your arrangement hits the right tone?
Climb the style ladder with this decorative
pattern. Mendelssohn creates a carpet of sound
in any setting. Pitch perfect.

MENDELSSOHN 10





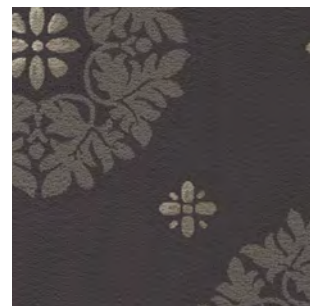
Ronald Jack A. Nelson.
Geb. 14 Dezember 1929 in Joliet, Illinois.

Nelson



Interior design, like music, invites you to express yourself. Nelson's three-tone pattern creates a playful ambiance that invites creativity and inspiration. Sit back, relax, enjoy.

NELSON 47



Mendelssohn



10



73



23



77



Special production:
minimum order
quantity of 240 m²

43



95



ACTION BACK 400 CM
100% PA 6 IMPREL®
↔ 99 X ↓ 93 CM

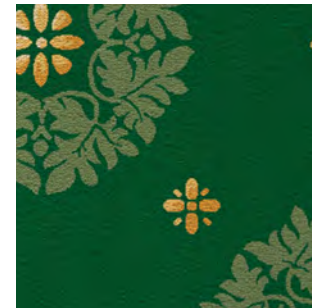
Nelson



49



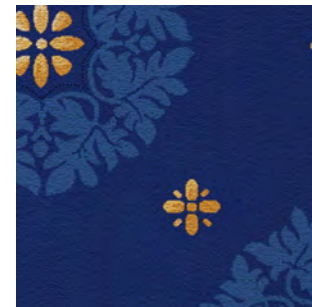
23



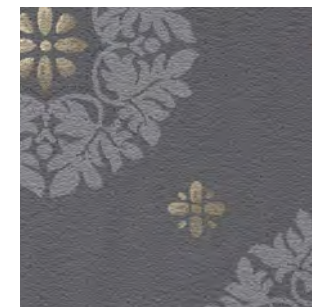
10



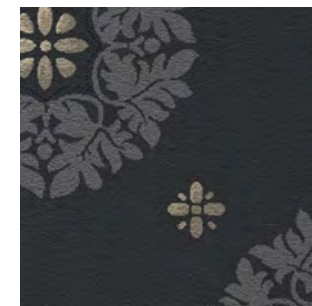
77



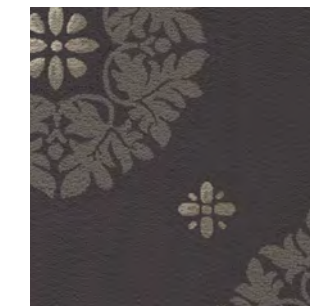
95



97



47



Special production:
minimum order
quantity of 240 m²

ACTION BACK 400 CM
100% PA 6 IMPREL®
↔ 50 X ↓ 50 CM



Franz Schubert.
Geb. 31 Jan. 1797 in Wien, gest. daselbst 19 Nov. 1828.

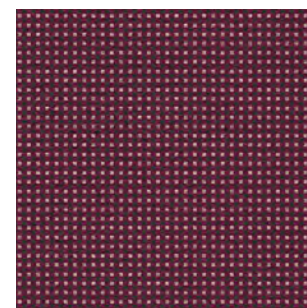
Schubert



Businessmen in a hotel lounge. Family and friends
in a restaurant. Travelers in an airport hall.

In the urban grid of city life, we brush
by thousands of strangers every day. Music has
the power to unite us all. Appeal to everyone's
taste, with Schubert's geometric pin check pattern.

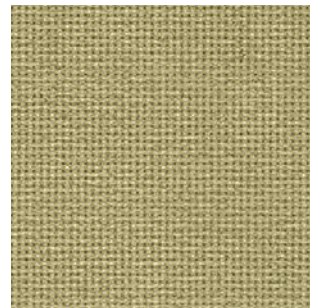
SCHUBERT 16



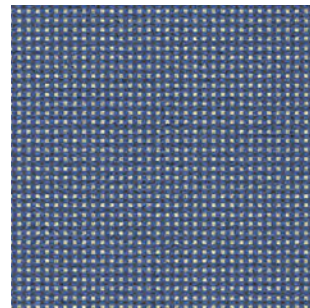
Schubert



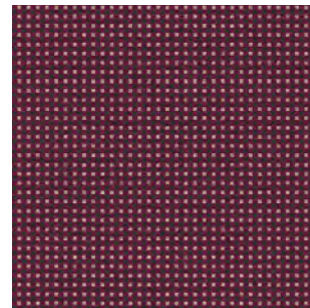
24



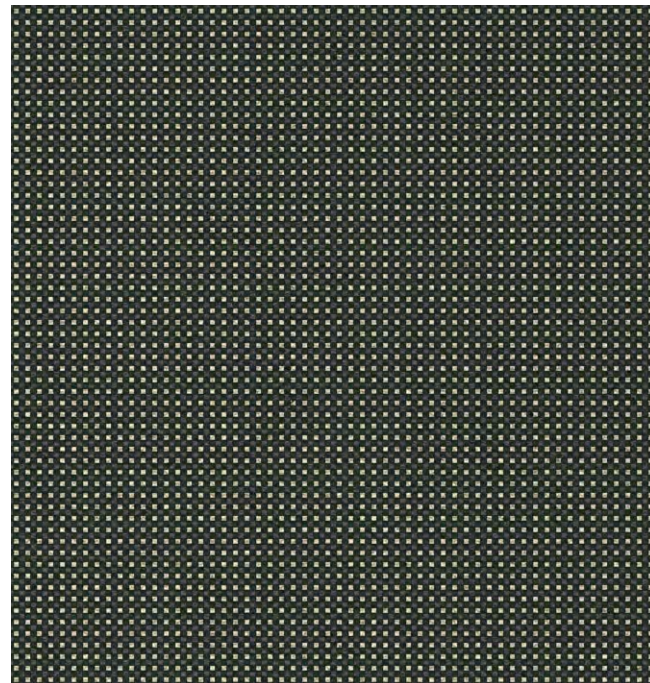
73



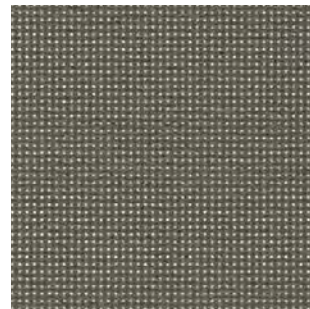
16



197



195



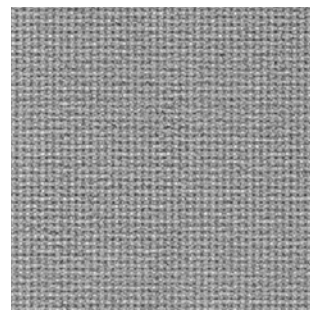
143



134



193



Special production:
minimum order
quantity of 240 m²

ACTION BACK 400 CM
100% PA 6 IMPREL®
↔ 1 X ↓ 1 CM

TECHNICAL SPECIFICATION

CONSTRUCTION

Tufting 1/10" saxony

PILE MATERIAL

100% PA 6 IMPREL®

PRIMARY BACKING

Non woven PES

SECONDARY BACKING

Action Back

PILE WEIGHT

Ca. 900 gr/m²

TOTAL WEIGHT

Ca. 1.875 gr/m²

PILE HEIGHT

Ca. 4 mm

TOTAL HEIGHT

Ca. 7 mm

TUFT DENSITY

Ca. 170.000/m²

PILE DENSITY

Ca. 0,143 g/cm³

CLASSIFICATION

EN 1307

32 - LC2

CASTOR CHAIR SUITABILITY

EN 985

A: intensive use

STAIR SUITABILITY

EN 1963

A: intensive use

PERMANENTLY ANTISTATIC

ISO 6356

< 2 kV

IMPACT NOISE RATING

ISO 140-8

24 dB ΔLw

SOUND ABSORPTION

ISO 354

0,20 αw

THERMAL RESISTANCE

ISO 8302

0,15 m² K/W

FASTNESS TO LIGHT

ISO 105-B02

≥ 5-6

COLOUR FASTNESS TO WATER

EN ISO 105-E01

≥ 4-5

RUBBING FASTNESS

EN ISO 105-X12

≥ 4

FIRE RESISTANCE

EN 13501-1

Cfl-s1

WIDTH

EN ISO 3018

Ca. 400 cm

OPTIONS

CUSTOMIZED COLOURS

Choose out of standard banks or submit own individual colours.

5 M WIDTH

FIRE CLASS Bfl-s1

BACKING OPTIONS: ULTRATEX / POWERBACK

Ultratex or Powerback with fire class Cfl-s1 might be of interest for:

- a better sound absorption
- a higher impact sound insulation

UPGRADE TO 1,150 GR/M² (PROGRESSA)

Might be of interest for hallways, corridors, public rooms, etc.

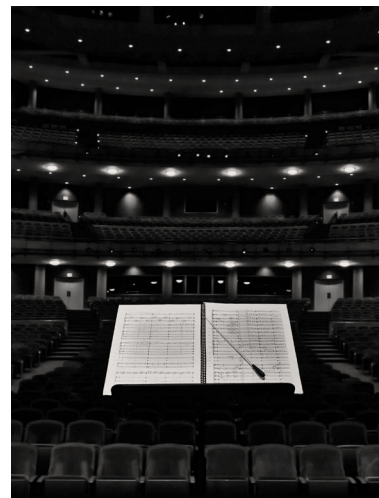
Main features :

- 1/10", 2-ply heat set saxony
- performance class 33
- suitable for stairs and castor chairs
- fire resistance Cfl-s1 EN 13501-1
- high impact sound insulation of 26 dB
- min. 60 lm



10/2020 WE RESERVE ALL RIGHTS FOR TECHNICAL IMPROVEMENTS.

Why choose a Suite Symphony flooring?



The Suite Symphony collection consists of carefully selected designs spread over different patterns, printed on high-performing Promenade cloth.

The collection is entirely produced in-house – from design to finished carpet – using latest digital printing technology and best quality control during every stage of the process.

Can't wait to order? We have 4 designs on stock in 4 m (roll & cut-length).

Committed to quality

POLYAMIDE 6 IMPREL®
All products of this collection are made from 100% high-quality polyamide 6 IMPREL® fibres for best performance and resilience.

PRODIS, GUT & TÜV
Quality-controlled production.

PROFESSIONAL USAGE CLASS
Contract usage class 32, suitable for hotels, offices, restaurants, etc.

SUITABLE FOR ALLERGENS
All products are certified as 'suitable for allergens' by the TÜV Institute.

FIRE-RESISTANT
All products offer fire resistance Cfl-s1 in accordance with EN 13501-1.

BETTER INDOOR ACOUSTICS
High sound insulation and best sound absorption.

Easy to order,
on-time delivery,
competitive price.

IMPREL® yarn

The products of the Suite Symphony collection are made from 100% polyamide 6 IMPREL®, ITC's branded yarn, for best performance and excellent quality.



Digital printing technology

arc edition disposes of a printing system called Chromojet. This technology uses high-speed valves, which are computer controlled. The pre-mixed pressurized spot colours are injected with high precision deep into the face of the pile without any machine parts touching the fabric. This results in deepest colour penetration and excellent print definition.

Advantages of the arc edition® digital printing technology

- No screens, no limitation in pattern repeats
- Highly flexible pattern change
- Full colour penetration
- High-resolution technology

All products and colours of the Suite Symphony collection are on stock, as roll or cut-length.

Carpet printing,
creativity without limits.



Would you like to hear a Suite Symphony tune?

Choose your favorite design from this collection
& create a floor to impress

INFO@ARCEDITION.COM

