

# Grace

the Vintage Collection

---

 arc edition

# Grace

## the Vintage Collection

---

Grace is all about storytelling. Stories of the past. Stories told to you by your mother, grandmother and greatgrandmother. Stories of strong women, that tell the tale of an era.

The vintage Grace Collection weaves all these stories together in familiar patterns of decades past. Timelessly elegant, the designs evoke a sense of class and sophistication in any setting.

Take a trip down memory lane with Alethea, Promethea, Coralia, Louvinia, Seraphina, and Ludmilla.



# Grace

the Vintage Collection

## FROM STOCK

- 06 Alethea
- 10 Promethea

## SPECIAL PRODUCTION MIN. 240 M<sup>2</sup>

- 16 Coralia
- 20 Louvinia
- 26 Seraphina
- 30 Celestia
- 36 Ludmilla

- 41 Technical Specifications



# Alethea

---

An empty room holds a number of potential narratives. A storage of endless possibilities of colour and form. Alethea tells a tale of rich tones and arabesque shapes: a vibrant patchwork of material memories.

N°14



# Alethea



N°32



N°39



N°27



N°93



N°14



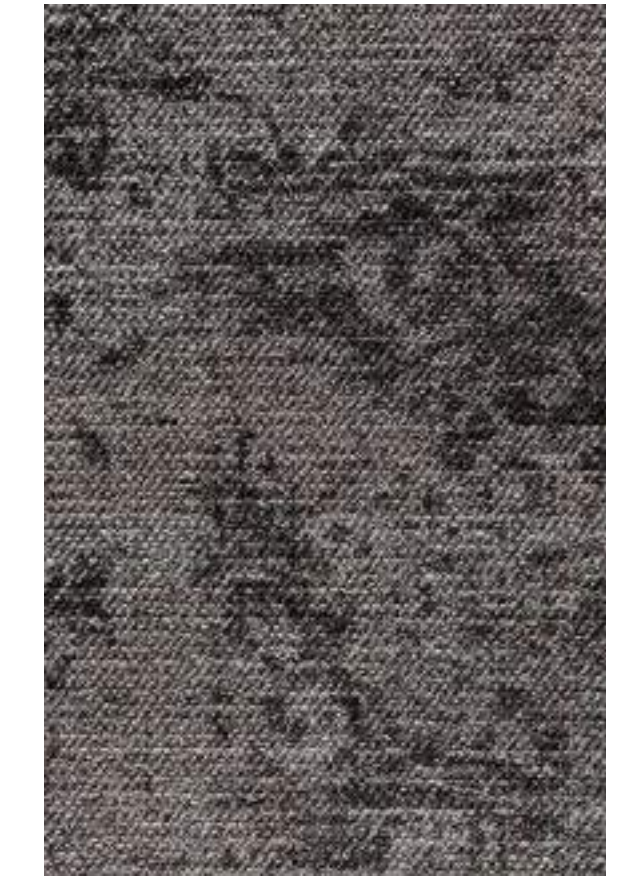
N°43



N°79



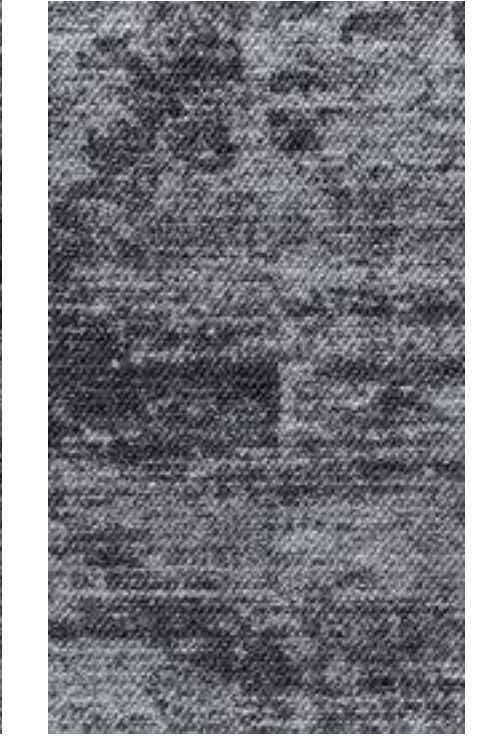
N°98



N°45



N°99



# Promethea

---

Promethea's modern pattern mixes with Vintage style effects to celebrates design and workplace wellness. Available in timeless colours, this floor can create striking decoration accents that invigorate the senses.

N°45





# Promethea

ACTION BACK 400 CM  
100% PA 6 IMPREL®  
↔ 199 X ↕ 193 CM

N°99



N°98



N°93



N°43



N°32



N°45



N°45



N°14



N°79



N°27



COMBINE  
ALETHEA & PROMETHEA

---

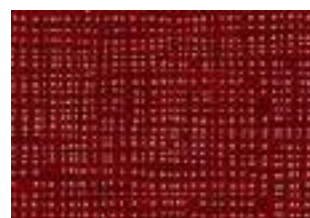


# Coralia

---

All personal recollections are made up of crisscrossing memories. Woven together, like the colours in this pattern, memories are never unequivocal. Coralia's versatile design tells a new story in every room. Can you hear it?

N°15





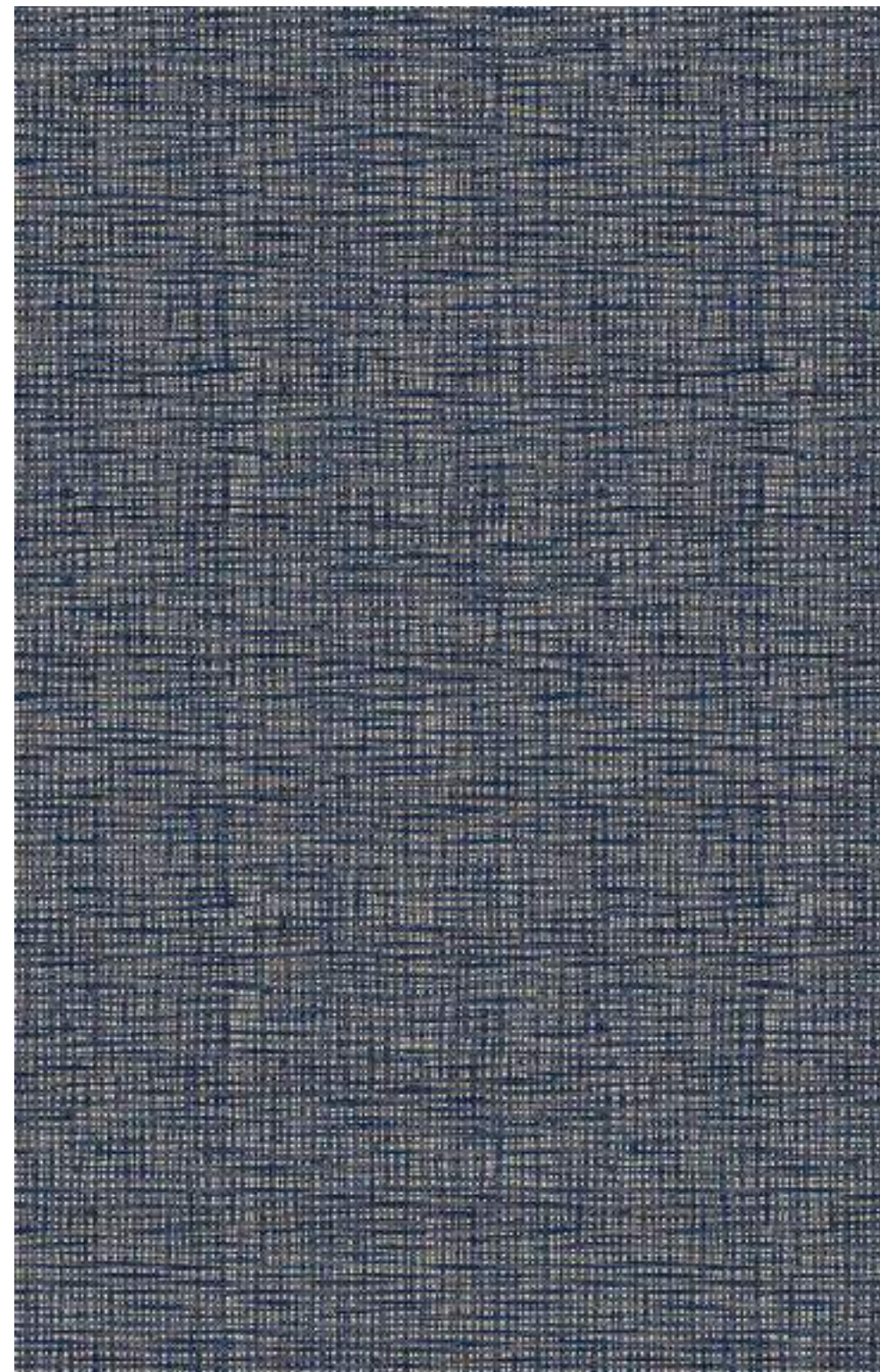
# Coralia

---

N°15



N°73



ACTION BACK 400 CM  
100% PA 6 IMPREL®  
↔ 98 X ⇓ 95 CM



# Louvinia

---

A window to the past. An escape from the hustle & bustle of modern-day life. A one-way ticket back to a simpler place and time. Embrace the relaxed retro feel of Louvinia. A two-toned floral design with an authentic vintage charm.

N°73



N°34



# Louvinia

---

ACTION BACK 400 CM  
100% PA 6 IMPREL®  
↔ 98 X ⚡ 95 CM

N°73



# COMBINE LOUVINIA & CORALIA

---



# Seraphina

---

Memories come in many forms: stories, pictures, fabrics ... Just like a painting opens the door to another world, Seraphina's sophisticated checker pattern offers a glimpse into a mirror reflecting another time.

N°92



# Seraphina

N°92



N°43



ACTION BACK 400 CM  
100% PA 6 IMPREL®  
↔196 X ↕190 CM



# Celestia

---

Time is the one thing we can never have enough of. Create a place where time stands still with this luxurious, baroque statement piece. Celestia, an everlasting design to be cherished for generations to come.

N°43



# Celestia



N°43



N°32



N°15



ACTION BACK 400 CM  
100% PA 6 IMPREL®  
↔ 196 X ↕ 190 CM



## COMBINE CELESTIA & CORALIA

---



# Ludmilla

---

The past is such a curious creature. The lines of the Ludmilla pattern run like the lines of a family tree, revealing connections between past and present. Contemporary meets vintage in this modern-day barcode design in various retro hues.

N°92





# Ludmilla

---

N°92



N°73

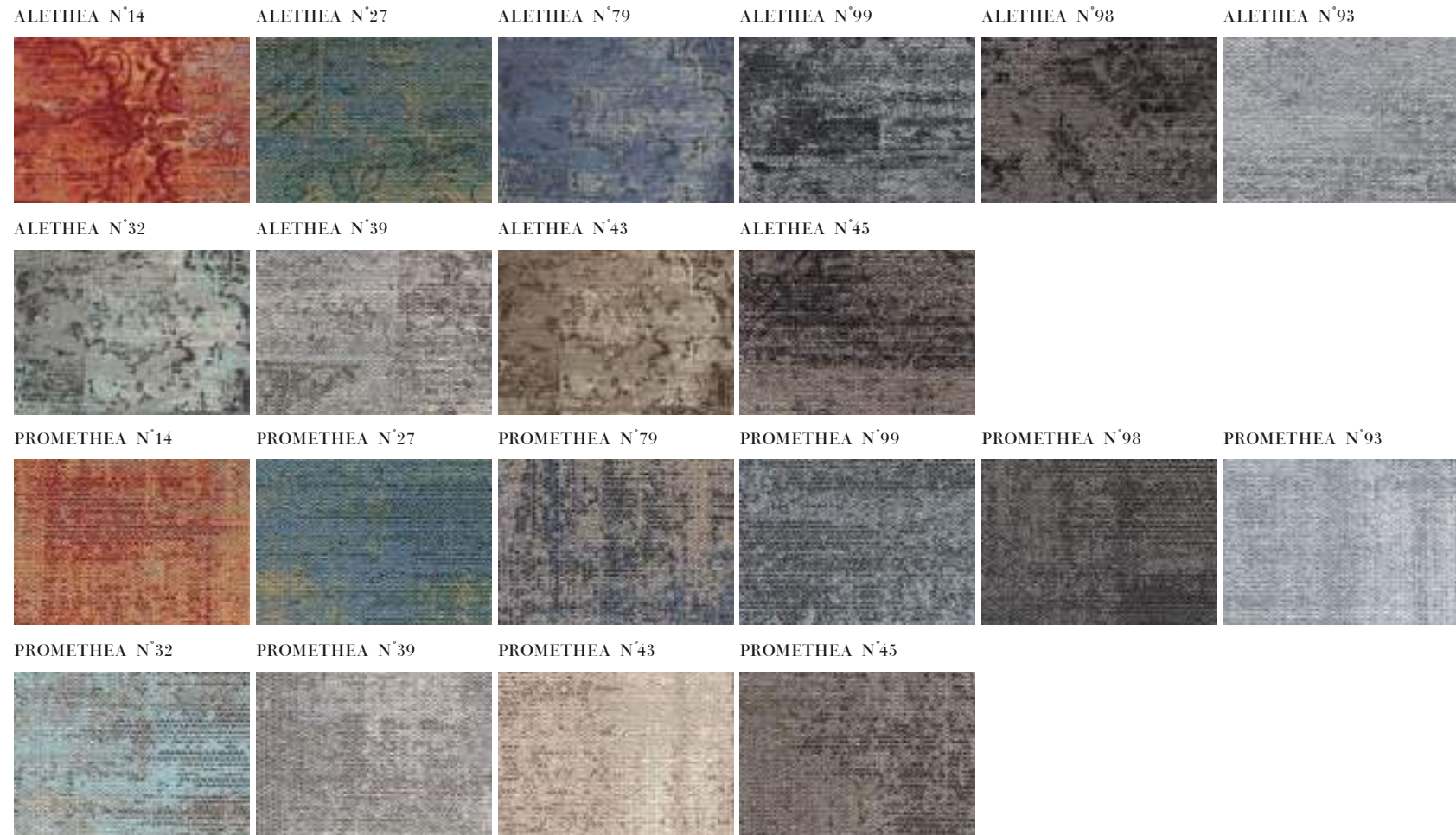


N°15



ACTION BACK 400 CM  
100% PA 6 IMPREL®  
↔ 50 CM

## FROM STOCK



## SPECIAL PRODUCTION MIN. 240 M<sup>2</sup>



## TECHNICAL SPECIFICATIONS

### CONSTRUCTION

Tufting 1/10" loop pile

### PILE MATERIAL

100% PA 6 IMPREL®

### PRIMARY BACKING

Non woven PES

### SECONDARY BACKING

Action Back

### PILE WEIGHT

Ca. 640 gr/m<sup>2</sup>

### TOTAL WEIGHT

Ca. 1.711 gr/m<sup>2</sup>

### PILE HEIGHT

Ca. 3,1 mm

### TOTAL HEIGHT

Ca. 5,8 mm

### TUFT DENSITY

Ca. 218 400/m<sup>2</sup>

### PILE DENSITY

Ca. 0.118 g/cm<sup>3</sup>

### CLASSIFICATION

EN 1307

33 - LC1

### CASTOR CHAIR SUITABILITY

EN 985

A: intensive use

### STAIR SUITABILITY

EN 1963

A: intensive use

### PERMANENTLY ANTISTATIC

ISO 6356

< 2 kV

### IMPACT NOISE RATING

ISO 140-8

25 dB ΔLw

### SOUND ABSORPTION

ISO 354

0.15 aw

### THERMAL RESISTANCE

ISO 8302

0.07 m<sup>2</sup> K/W

### FASTNESS TO LIGHT

ISO 105-B02

≥ 5-6

### COLOUR FASTNESS TO WATER

EN ISO 105-E01

≥ 4-5

### RUBBING FASTNESS

EN ISO 105-X12

≥ 4

### FIRE RESISTANCE

EN 13501-1

Cfl-s1

### NUMBER OF COLOURS

16

### WIDTH

EN ISO 3018

Ca. 400 cm



A photograph of a room with a fireplace mantel. The mantel is made of wood and supported by ornate stone columns. The fireplace opening is filled with a brick wall. Several rolls of wallpaper are scattered on the floor. One roll is partially unrolled, showing a blue and white floral pattern. Another roll is partially unrolled, showing a red and white floral pattern. A window with a wooden frame is visible on the right wall.

**Ready to write your own story?  
Let's talk!**

---

 **arc edition**

Balta Industries nv - Division ITC  
Kanegemstraat 15 - B-8700 Tielt - Belgium  
T +32 (0)51 42 44 11 - F +32 (0)51 42 44 85  
[info@arcedition.com](mailto:info@arcedition.com) - [www.arcedition.com](http://www.arcedition.com)

 arc **edition**

Balta Industries nv - Division ITC  
Kanegemstraat 15 - B-8700 Tielt - Belgium  
T +32 (0)51 42 44 11 - F +32 (0)51 42 44 85  
[info@arcedition.com](mailto:info@arcedition.com) - [www.arcedition.com](http://www.arcedition.com)

