



**arc edition**  
performance flooring  
by Balta

THE  
**Suite  
Symphony**

COLLECTION

04	Cambini
06	Satie
12	Mendelssohn
14	Nelson
18	Strauss
20	Bach
26	Schubert
28	Mozart
32	Technical specification



# THE Suite Symphony

## COLLECTION

Much like composing a piece of music, the composition of a room is all about finding the best arrangement. About striking the right note, with colours, patterns and objects. About finding harmony in the pieces you put together. And then there's music in the air. The songful sound of a suite symphony.

Care to tune in?



Giuseppe Maria Gioacchino Cambini,  
Geb. 13 Februar 1746 in Livorno, gest. 29 Dezember 1825 in Paris.

# Cambini



Patterns are essential to any composition.  
In music and design. The right combination will  
set the tone for a mesmerising melody.  
Ready to style? Compose away  
with Cambini's diamond pattern.

CAMBINI 95





Erik Satie.  
Geb. 17. Mai 1866 in Honfleur, gest. 1. Juli 1925 in Paris.

# Satie



Originally, chamber music was music composed for the home. The key to creating a warm space is to add tones with a familiar ring to them. Feel like home, away from home, with Satie's welcoming design.

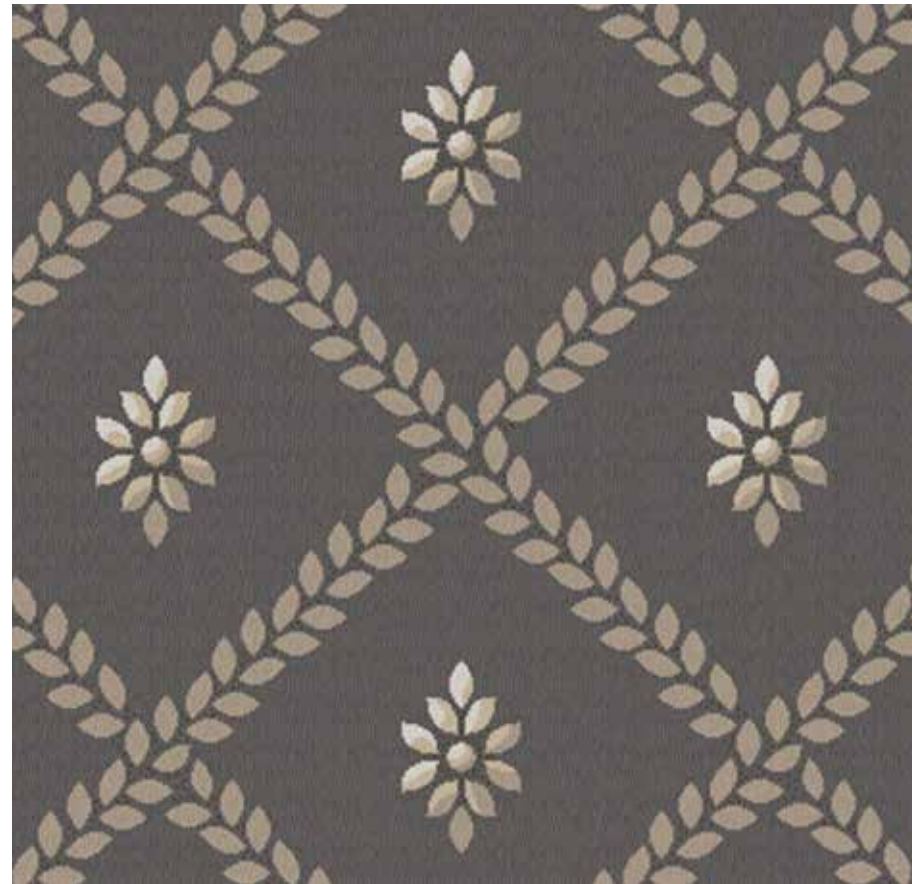
SATIE 39



# Cambini



47



39



49



95



77



10



23



ACTION BACK 400 CM  
100% PA 6 IMPREL®  
↔ 24 X ↓ 24 CM

# Satie



39



47



95



49



77



23

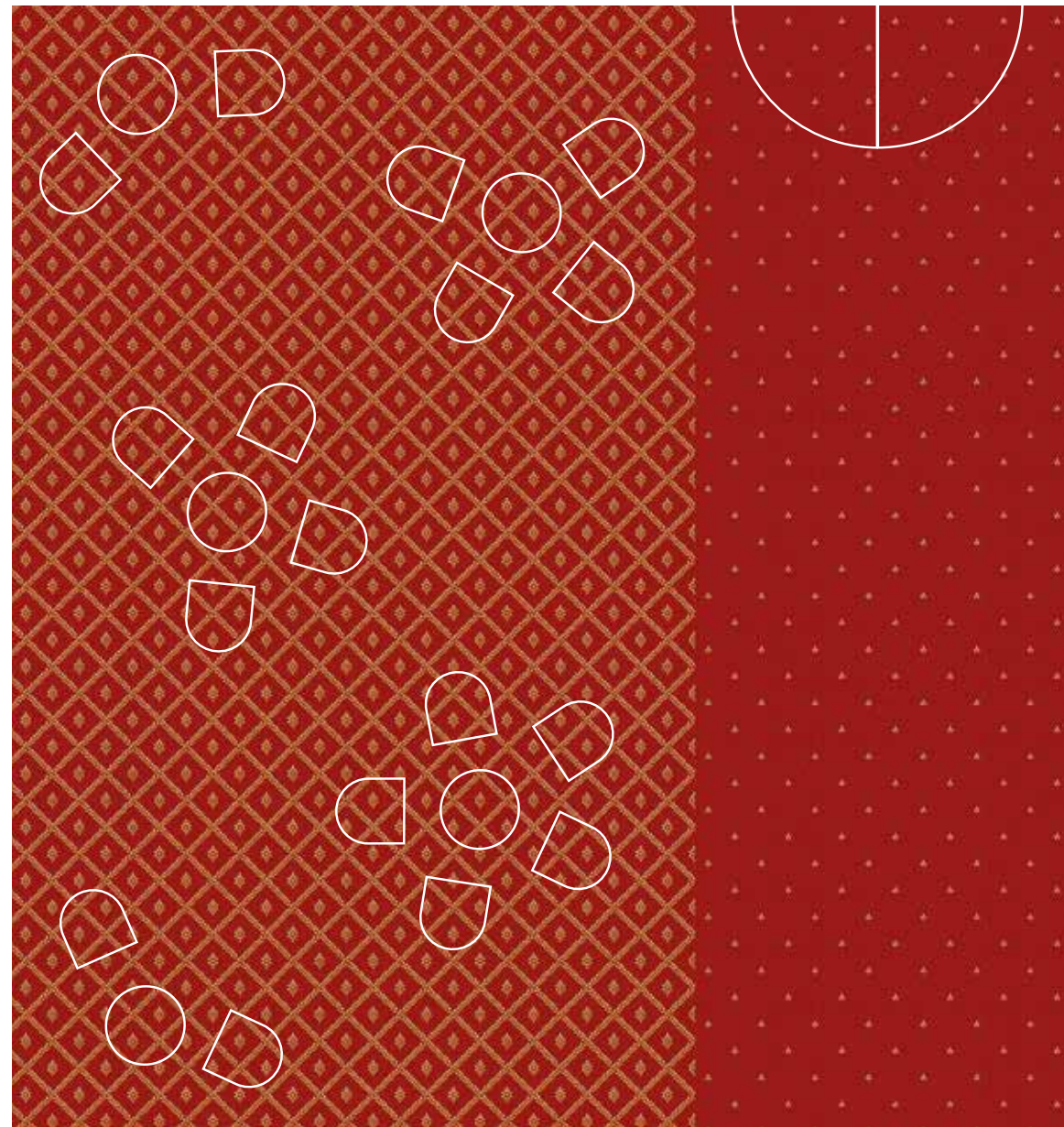


10



ACTION BACK 400 CM  
100% PA 6 IMPREL®  
↔ 24 X ↓ 24 CM

COMBINE  
SATIE & CAMBINI  
*ss*





Felix Mendelssohn - Bartholdy,  
Geb. 3 Febr. 1809 in Hamburg, gest. 4 Nov. 1847 in Leipzig.

# Mendelssohn



Not sure if your arrangement hits the right tone?  
Climb the style ladder with this decorative  
pattern. Mendelssohn creates a carpet of sound  
in any setting. Pitch perfect.

MENDELSSOHN 10





Ronald Jack A. Nelson.  
Geb. 14 Dezember 1929 in Joliet, Illinois.

# Nelson



Interior design, like music, invites you to express yourself. Nelson's three-tone pattern creates a playful ambiance that invites creativity and inspiration. Sit back, relax, enjoy.

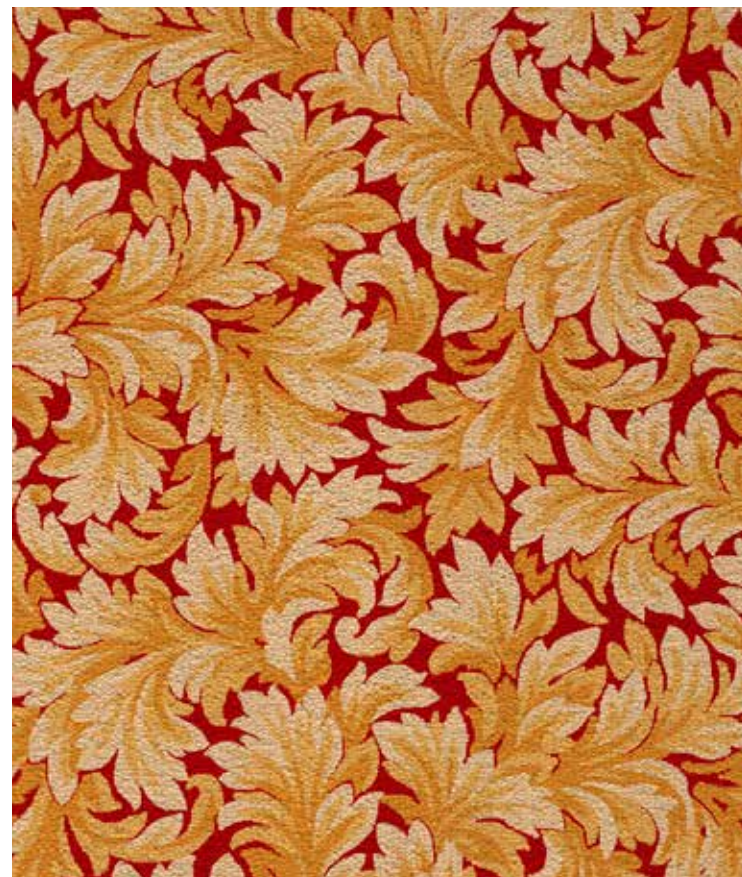
NELSON 47



# Mendelssohn



10



73



23



77



43



95



# Nelson



49



23



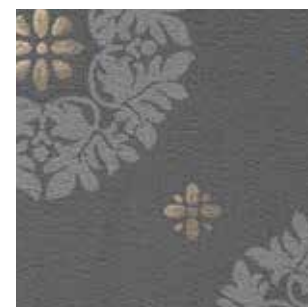
10



77



95



97



47



ACTION BACK 400 CM  
100% PA 6 IMPREL®  
↔ 99 X ↓ 93 CM

ACTION BACK 400 CM  
100% PA 6 IMPREL®  
↔ 50 X ↓ 50 CM



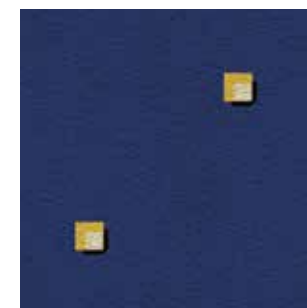
Johann Baptist Strauss,  
Geb. 25 Oktober 1825 in Wien, gest. 3 Juni 1899 in Wien.

# Strauss



Music is known to boost our focus and concentration. Strauss' square motif is the perfect background piece for your office or meeting room. Ready to call the tune?

STRAUSS 77





Johann Sebastian Bach.  
Geb. 21 März 1685 in Eisenach, gest. 28 Juli 1750 in Leipzig.

# Bach

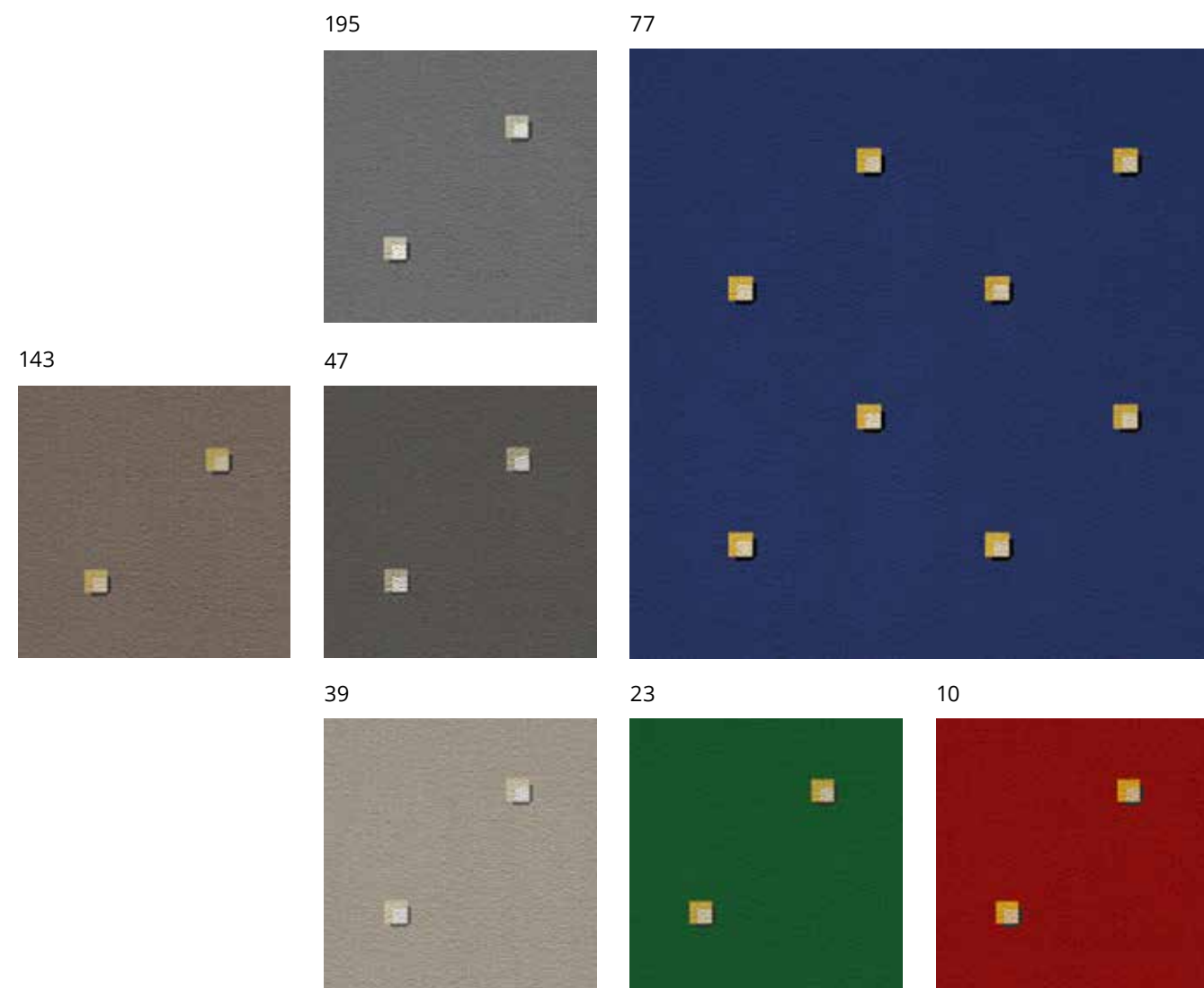


Set the foundation for a majestic setting with this regal pattern. An elegant statement choice that adds impact to any room. Introduce the grandeur of the largest orchestra hall into your chambers.

BACH 10

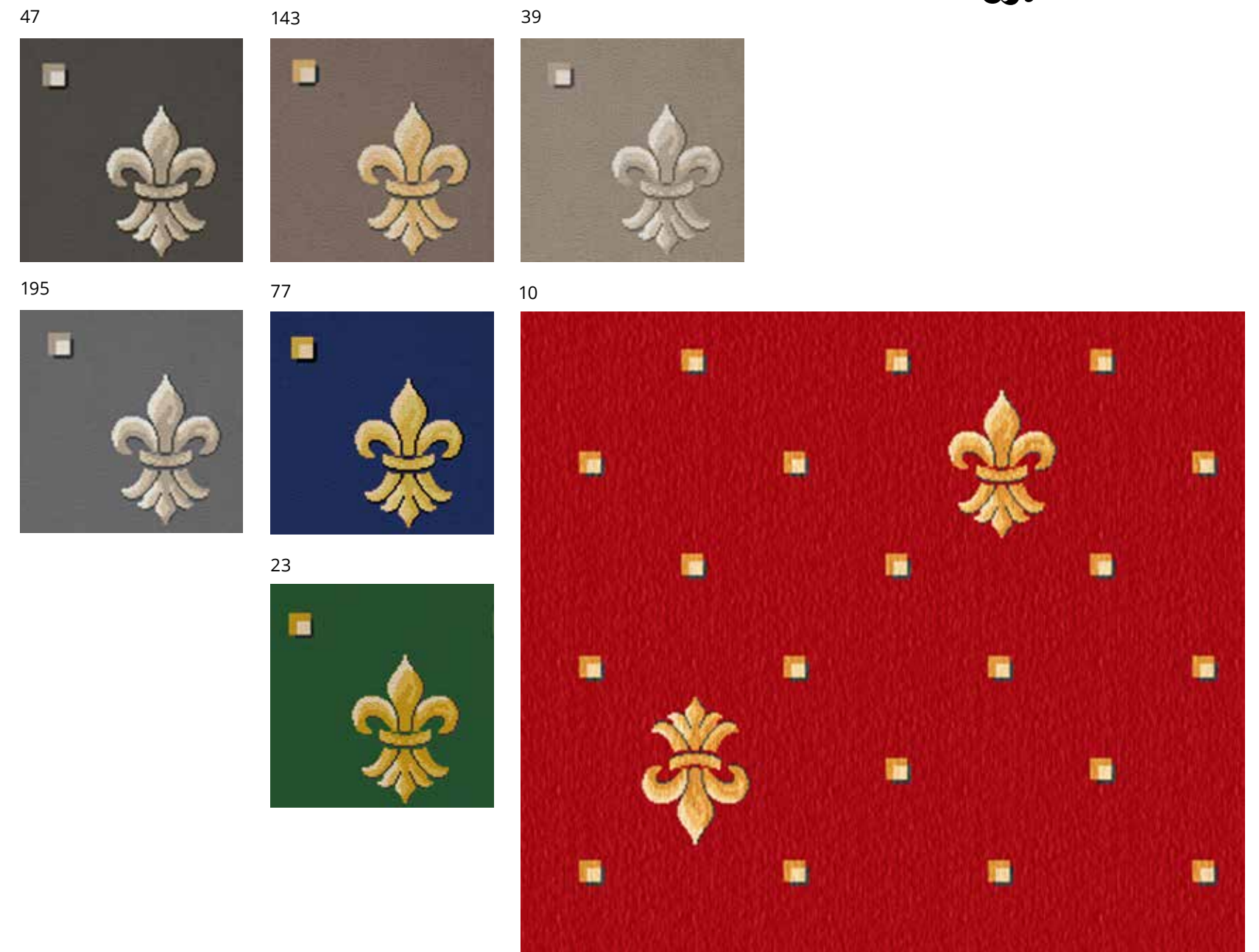


# Strauss



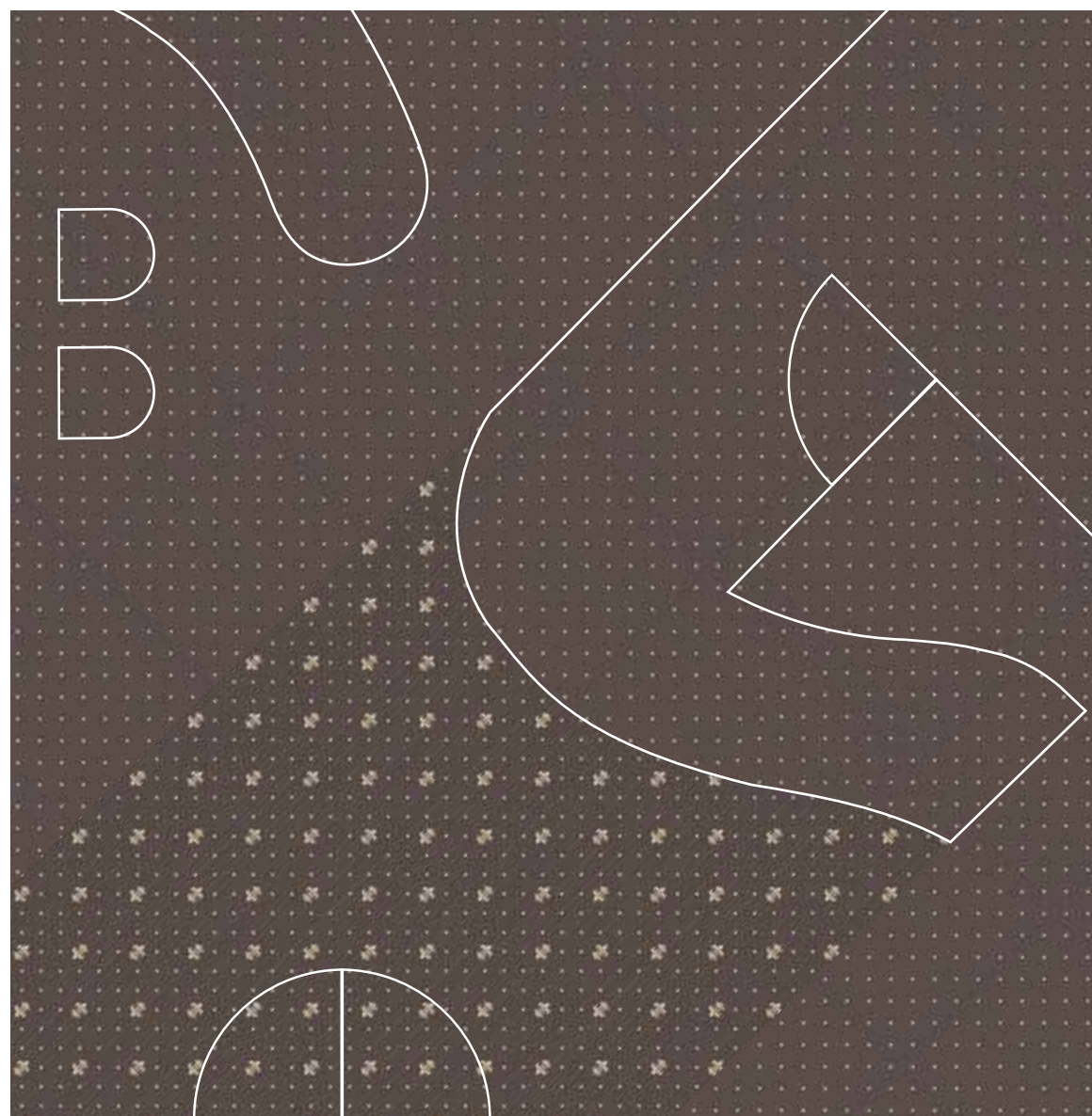
ACTION BACK 400 CM  
100% PA 6 IMPREL®  
↔ 12 X ↓ 12 CM

# Bach



ACTION BACK 400 CM  
100% PA 6 IMPREL®  
↔ 32 X ↓ 32 CM

COMBINE  
BACH & STRAUSS  
S





Franz Schubert.  
Geb. 31 Jan. 1797 in Wien, gest. daselbst 19 Nov. 1828.

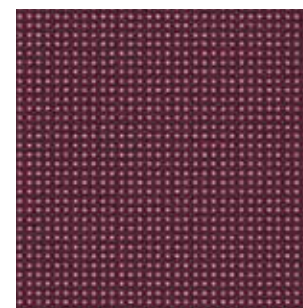
# Schubert



Businessmen in a hotel lounge. Family and friends  
in a restaurant. Travelers in an airport hall.

In the urban grid of city life, we brush  
by thousands of strangers every day. Music has  
the power to unite us all. Appeal to everyone's  
taste, with Schubert's geometric pin check pattern.

SCHUBERT 16





Wolfgang Amade Mozart,  
Geb. 27 Jan. 1756 in Salzburg, gest. 5 Dez. 1791 in Wien.

# Mozart



Just like a mirror, Mozart's baroque swirl pattern adds dimension to any room. Create space to move and dance in a timeless and sophisticated atmosphere.

MOZART 149



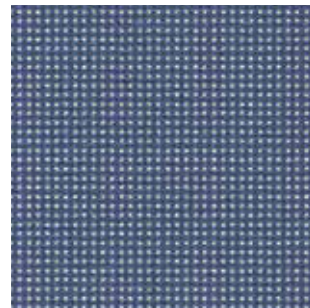
# Schubert



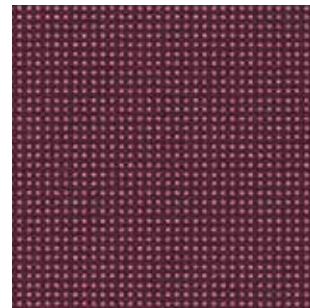
24



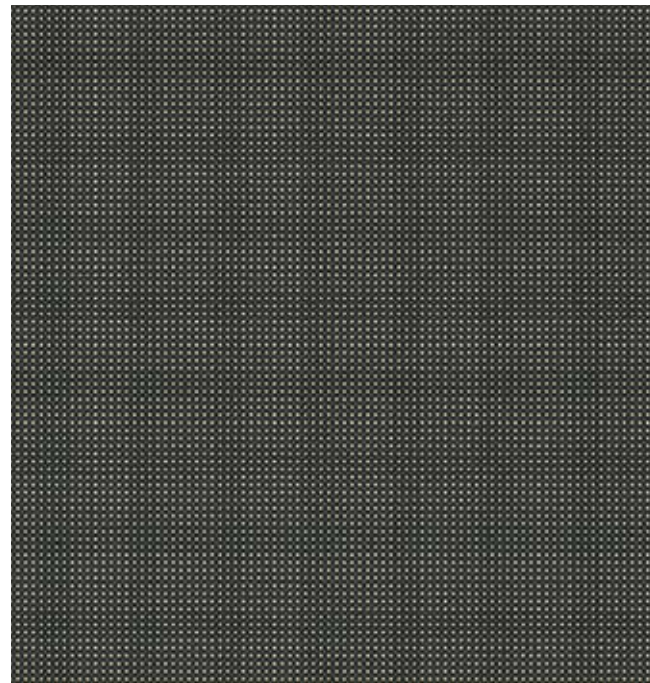
73



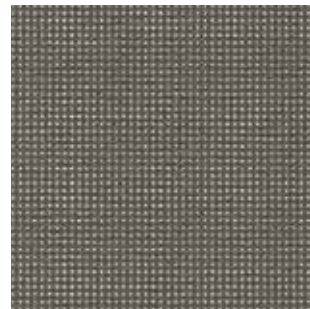
16



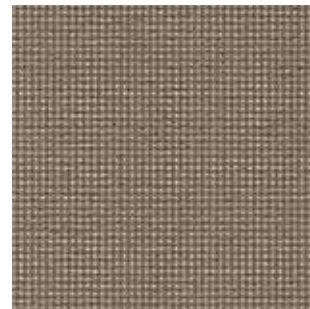
197



195



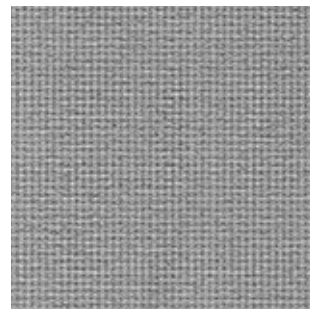
143



134



193



# Mozart



10



77



234



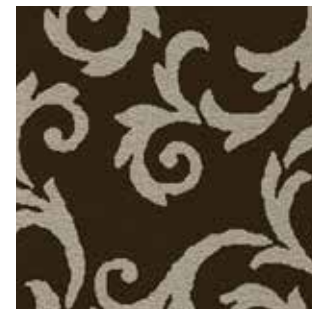
143



197



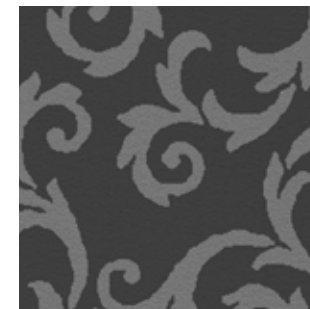
149



47



297



ACTION BACK 400 CM  
100% PA 6 IMPREL®  
↔ 1 X ↓ 1 CM

ACTION BACK 400 CM  
100% PA 6 IMPREL®  
↔ 94 X ↓ 94 CM

# TECHNICAL SPECIFICATION

## CONSTRUCTION

Tufting 1/10" saxony

## PILE MATERIAL

100% PA 6 IMPREL®

## PRIMARY BACKING

Non woven PES

## SECONDARY BACKING

Action Back

## PILE WEIGHT

Ca. 900 gr/m<sup>2</sup>

## TOTAL WEIGHT

Ca. 1.875 gr/m<sup>2</sup>

## PILE HEIGHT

Ca. 4 mm

## TOTAL HEIGHT

Ca. 7 mm

## TUFT DENSITY

Ca. 170.000/m<sup>2</sup>

## PILE DENSITY

Ca. 0,143 g/cm<sup>3</sup>

## CLASSIFICATION

EN 1307  
32 - LC2

## CASTOR CHAIR SUITABILITY

EN 985  
A: intensive use

## STAIR SUITABILITY

EN 1963  
A: intensive use

## PERMANENTLY ANTISTATIC

ISO 6356  
< 2 kV

## IMPACT NOISE RATING

ISO 140-8  
24 dB ΔLw

## SOUND ABSORPTION

ISO 354  
0,20 αw

## THERMAL RESISTANCE

ISO 8302  
0,15 m<sup>2</sup> K/W

## FASTNESS TO LIGHT

ISO 105-B02  
≥ 5-6

## COLOUR FASTNESS TO WATER

EN ISO 105-E01  
≥ 4-5

## RUBBING FASTNESS

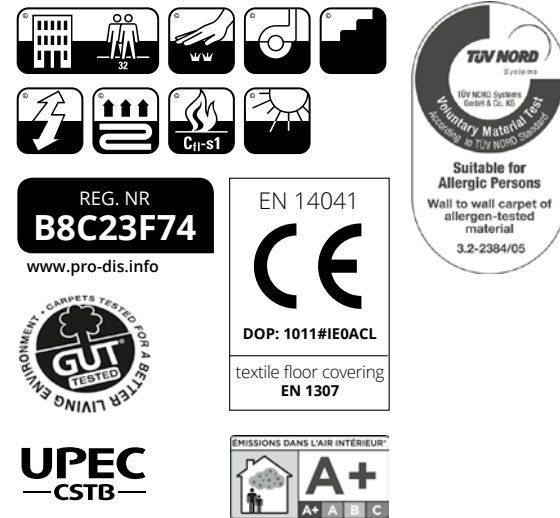
EN ISO 105-X12  
≥ 4

## FIRE RESISTANCE

EN 13501-1  
Cfl-s1

## WIDTH

EN ISO 3018  
Ca. 400 cm



## OPTIONS

### CUSTOMIZED COLOURS

Choose out of standard banks or submit own individual colours.

### 5 M WIDTH

### FIRE CLASS Bfl-s1

### FELT BACKING

Felt backing with fire class Cfl-s1 might be of interest for:

- a better sound absorption
- a higher impact sound insulation

### UPGRADE TO 1,150 GR/M<sup>2</sup> (PROGRESSA)

Might be of interest for hallways, corridors, public rooms, etc.

Main features :

- 1/10", 2-ply heat set saxony
- performance class 33
- suitable for stairs and castor chairs
- fire resistance Cfl-s1 EN 13501-1
- high impact sound insulation of 26 dB
- min. 60 lm



## Why choose a Suite Symphony flooring?

The Suite Symphony collection consists of 57 carefully selected designs spread over 8 different patterns, printed on high-performing Promenade cloth. The collection is entirely produced in-house – from design to finished carpet – using latest Chromojet technology and best quality control during every stage of the process.

Can't wait to order? We have the entire collection on stock in 4 m (roll & cut-length).

## Committed to quality

### POLYAMIDE 6 IMPREL®

All products of this collection are made from 100% high-quality polyamide 6 IMPREL® fibres for best performance and resilience.

### PRODIS, GUT & TÜV

Quality-controlled production.

### PROFESSIONAL USAGE CLASS

Contract usage class 32, suitable for hotels, offices, restaurants, etc.

### SUITABLE FOR ALLERGICS

All products are certified as 'suitable for allergics' by the TÜV Institute.

### FIRE-RESISTANT

All products offer fire resistance Cfl-s1 in accordance with EN 13501-1.

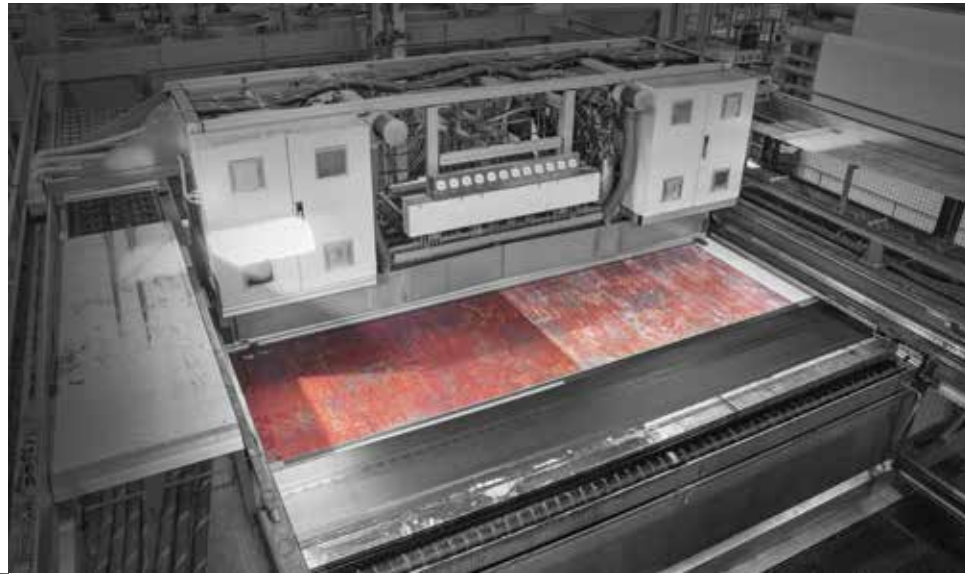
### BETTER INDOOR ACOUSTICS

High sound insulation and best sound absorption.

Easy to order,  
on-time delivery,  
competitive price.

## IMPREL® yarn

The products of the Suite Symphony collection are made from 100% polyamide 6 IMPREL®, ITC's branded yarn, for best performance and excellent quality.



## Chromojet technology

Chromojet is a printing system using high-speed valves, which are computer controlled. The pre-mixed pressurized spot colours are injected with high precision deep into the face of the pile without any machine parts touching the fabric. This results in deepest colour penetration and excellent print definition.

## Advantages of the arc edition® Chromojet technology

- No screens, no limitation in pattern repeats
- Highly flexible pattern change
- Full colour penetration
- High-resolution technology


All products and colours of the Suite Symphony collection are on stock, as roll or cut-length.

Carpet printing,  
creativity without limits.



Would you like to hear a Suite Symphony tune?  
All designs are available on stock.

[INFO@ARCEDITION.COM](mailto:INFO@ARCEDITION.COM)



Balta Industries nv - Division ITC  
Kanegemstraat 15 - B-8700 Tielt - Belgium  
T +32 (0)51 42 44 11 - F +32 (0)51 42 44 85  
[info@arcedition.com](mailto:info@arcedition.com)

[www.arcedition.com](http://www.arcedition.com)

 **arc edition**<sup>®</sup>  
performance flooring  
by Balta